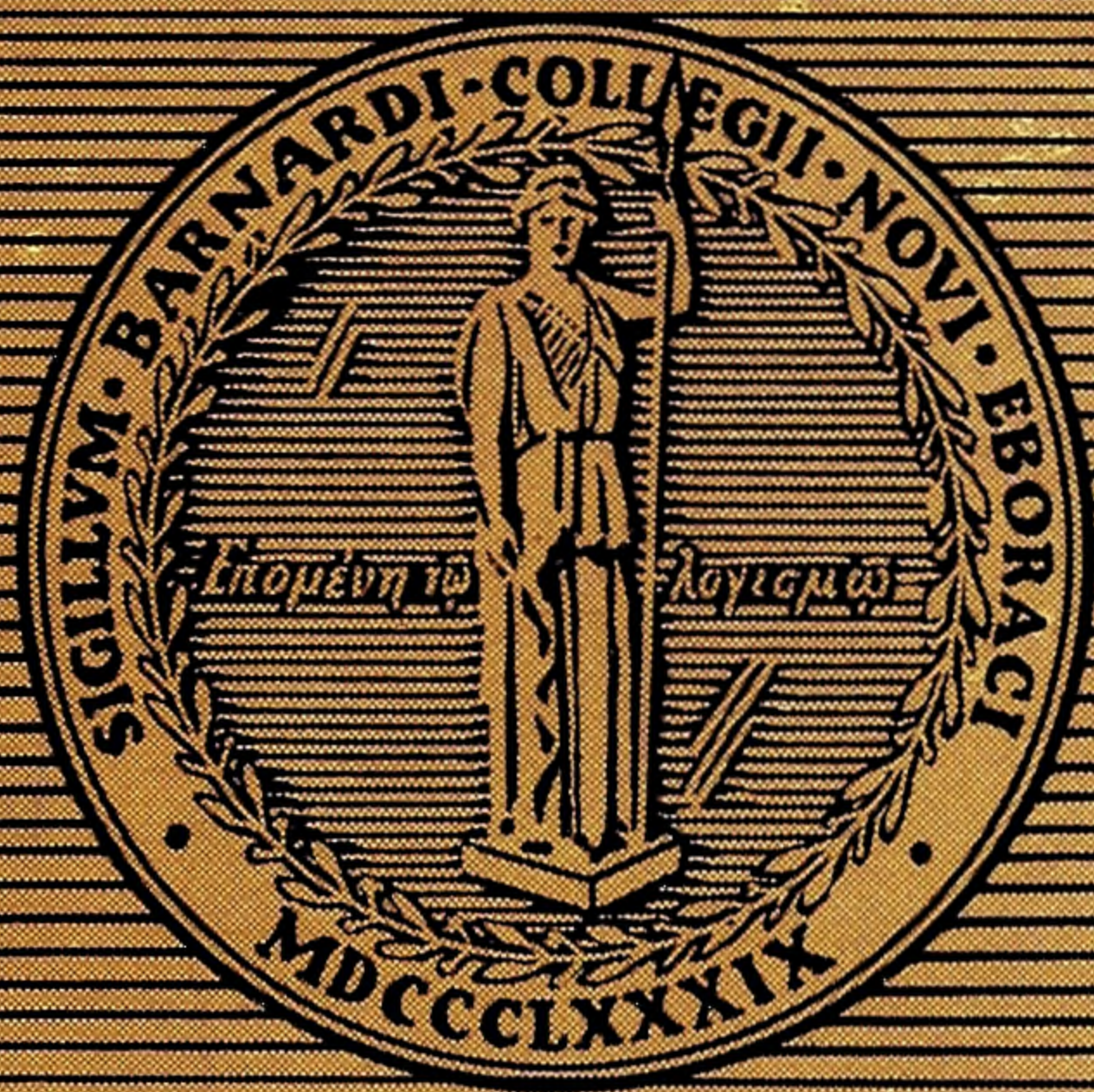


28
BARNARD
COLLEGE
ALUMNIÆ



OCTOBER

COMING EVENTS

OCTOBER

11th—Tuesday

Alumnae Tuesday Nights—Opening of Winter Session—Registration 7:30 p.m.—Barnard Hall.

17th—Monday

Central Committee of Alumnae Fund—4 p.m.—Little Parlor.

18th—Tuesday

Board of Editors, *Alumnae Monthly*—8 p.m.—Little Parlor.

Alumnae Tuesday Nights—7:30 p.m.—Barnard Hall.

25th—Tuesday

Alumnae Tuesday Nights—7:30 p.m.—Barnard Hall.

NOVEMBER

19th—Saturday

NATIONAL BARNARD DAY.

ASSOCIATE ALUMNAE OF BARNARD COLLEGE

President

PRISCILLA LOCKWOOD LOOMIS, 1913

First vice-president

ANNA I. VON SHOLLY, 1898

Second vice-president

ADELE ALFKE THOMPSON, 1919

Secretary

EDITH DEACON, 1912

Treasurer

EDITH HALFPENNY, 1913

Auditor

LILLIAN WALTON, 1914

Clerk

EDITH STILES BANKER, 1915

Executive secretary

PAGE JOHNSTON, 1937

DIRECTORS

Clairette Armstrong, 1908

Dorothy Maloney Johnson, 1923

Helen Purdy Beale, 1918

Lily Murray Jones, 1905

Edna Trull Bird, 1924

Sidney Louise Miner, 1914

Jane Craighead, 1937

Elizabeth Reynard, 1922

Elva French Hale, 1925

Alice Burbank Rhoads, 1923

Elizabeth Wright Hubbard, 1917

Genā Tenney, 1933

Mabel Parsons, 1895, *Alumnae Trustee*

Iphigene Ochs Sulzberger, 1914, *Alumnae Trustee*

C O N T E N T S

	<i>Page</i>
IN MEMORIAM—JAMES R. SHEFFIELD	2
ON AND OFF THE CAMPUS	3
National Barnard Day in New York	3
Administration Notes	4
Save the Date	4
BARNARD'S SENIOR PROFESSOR	5
ALUMNAE PROJECTS	6
Alumnae Tuesday Nights	6
A Letter from the Thrift Shop Chairman	6
"Monthly" Comment	7
NATIONAL BARNARD DAY	8-9
ALUMNAE FUND REPORT 1937-38	10-18
AGONY COLUMN	18
THE BARNARD CLUBS	18
CLASS NOTES	19

E D I T O R I A L B O A R D

GENE PERTAK STORMS, *Editor-in-Chief*

GRACE REINING UPDERGOVE, <i>Business Manager</i>	DOROTHY PUTNEY, <i>Advertising Manager</i>
EMMA BUGBEE	RUTH RICHARDS
HILDA LOVEMAN	MARIAN CHURCHILL WHITE
JEAN MACALISTER	JULIA TREACY WINTJEN
EMILIE YOUNG MUZZEY	DOROTHY WOOLF
GEORGIANA REMER	KATHARINE MCGIFFERT WRIGHT
 PRISCILLA LOCKWOOD LOOMIS, <i>ex-officio</i>	 PAGE JOHNSTON, <i>ex-officio</i>

ADVISORY BOARD

BEULAH AMIDON	AMY LOVEMAN
MARY CARSON COOKMAN	ALICE DUER MILLER
FREDA KIRCHWEY	HELEN ROGERS REID
DOROTHY GRAFFE VAN DOREN	

JAMES ROCKWELL SHEFFIELD

BARNARD has lost a devoted friend by the death on September 2nd of James R. Sheffield. Born in Dubuque, Iowa, in 1864, Mr. Sheffield attended Williston Seminary, Yale University and Harvard Law School. He became a member of the New York Legislature in 1894 and for three years was Fire Commissioner of New York. From 1924 to 1927 he was United States Ambassador to Mexico, and in 1930 a special ambassador to Venezuela. He was a delegate to four National Republican Conventions and served in various state conventions.

An able lawyer, a director of the Radio Corporation of America, and of the National Broadcasting Company, and of other business organizations, Mr. Sheffield found time to serve also on the boards of the Presbyterian Hospital, Trudeau Sanitarium, the Babies' Hospital, and Barnard College.



We knew him best as our trustee. He was elected to the Board of Trustees on February 8, 1918, and served as its chairman from December, 1930, until last fall when, because of poor health, he resigned as chairman but continued to remain a helpful member.

With a genial warmth, he, as chairman, greeted the trustees as they arrived one by one for their meetings. His loyalty to the College and his admiration for Dean Gildersleeve he faithfully demonstrated. His ambitions for Barnard were great and he oftentimes remarked that he liked to think of Barnard College taking an important place in this great City of New York. His justice disclosed a patient tolerance for all; his strength lay in gentleness. The merry twinkle in his eye revealed an excellent sense of humor. He was beloved by all of us who knew him.

EDITH MULHALL ACHILLES

BARNARD COLLEGE

ALUMNAE MONTHLY

On And Off

The Campus

DEAN GILDERSLEEVE returned on September thirteenth to a campus buzzing with plans for the fiftieth anniversary year. Of her months abroad she writes:

"The summer of 1938 was for me a rather pleasant and certainly interesting one, but a little too busy to be entirely satisfactory. International work occupied a good deal of my time. Late in June I addressed the Liverpool Branch of the British Federation of University Women, where I found a most friendly and understanding audience. I was particularly intrigued by one kind and cordial lady who said, 'Oh, Miss Gildersleeve, do tell us where you learned to speak English!' I have never decided just what she meant.

"Early in July I spent a few days at Reid Hall, in a very gay and cheerful Paris, decorated and ready for the visit of the British king and queen. It is hard for us to realize over here of what immense importance to the French this visit was, how comforting and how unifying.

"The International Federation of University Women, of which I am at the moment President, kept me very busy later in July, while the officers met at Rottingdean in Sussex and afterwards during the Council Meeting sessions and festivities at Crosby Hall and Bedford College in London. International affairs were of course perplexing and generally saddening. We were much occupied with the problem of the exiles; the Austrian Federation was on the verge of dissolution (it has since dissolved); and the Councillor from Czechoslovakia had very moving news to report.

"As for my personal diversions—I attended a

wonderful performance of Verdi's *Macbeth* at Glyndebourne, which is a sort of English Bayreuth in Sussex, and had a glimpse of the Malvern Festival while I was in Herefordshire. I drove my car on a little tour to the West and into Wales. It was a dry summer for the garden, but good for walking on the South Downs.

"Over those soft and quiet hills and fields the shadow of war seemed this summer to be creeping nearer. In our tiny villages we had meetings to discuss air raids,—how gas masks would be distributed, how to deal with incendiary bombs, and what could be done with the hordes of refugees who would stream out of the big towns nearby—Brighton and Eastbourne. 'And what will we do for our animals?' asked one old village woman. 'Will they give us gas masks for our cows?'

"That this shadow should actually be creeping near the Sussex farms seems impossible to believe over here. It is like a nightmare, from which I pray we can soon awake.

"Now I am absorbed in the opening of Barnard's Fiftieth Year. It will be a good year, I think, with an exceptionally interesting student body."

National Barnard Day in New York

NEW YORK alumnae are invited to celebrate National Barnard Day, November 19th, at the tea in the Rainbow Room, Rockefeller Center, which is being arranged by the New York committee of which Mrs. Willard B. Stoughton is chairman. Miss Gildersleeve and the alumnae who are taking part in the broadcast (see page 8), will be the guests of honor at this tea.

There will be music throughout the afternoon,

and guests will have the choice of two cocktails or tea with sandwiches, cake, and ices. Tables may be reserved in advance, and it is hoped that alumnae will bring their friends, men as well as women, to share in this advance celebration of Barnard's fiftieth anniversary.

Mrs. Ray R. Allen, Mrs. Robert P. Rhoads, Mrs. Hooker Talcott, and Mrs. James J. Walsh are assisting with the arrangements.

Administration Notes

THE administration is happy to announce the appointment of Professor Harry D. Gideonse, formerly of the University of Chicago, as professor of economics in Barnard College. He will be chairman of the Barnard department of economics and social science, and will give courses in elementary economics and economic history in Barnard, and a course for seniors and graduate students in the Graduate School of Columbia.

Professor Gideonse was trained in Columbia College and in the Graduate School of Columbia University, and finished his graduate work at the University of Geneva, Switzerland, where he wrote a thesis on "Transfert des Reparations et Plan Dawes."

He taught at Barnard and Columbia College in the academic year 1925-26, was Director of International Student Work in Geneva, Switzerland, from 1926-28, and Assistant Professor of Economics at Rutgers University, from 1928 to 1930. Since that time he has been associate professor of economics and chairman of the social science courses in the College at the University of Chicago.

Professor Gideonse is American Editor of the *Revue Economique Internationale*, and Editor of the Public Policy Pamph-

lets at the University of Chicago. Besides his thesis, he is the author of "The International Bank," "War Debts," "America in a World Economy," "The Higher Learning in a Democracy," "The Commodity Dollar." He is executive vice-president of the Economists National Committee on Monetary Policy, has worked with the Foreign Policy Association, and is well known as a brilliant teacher and distinguished public speaker.

* * *

Dr. Louise Rosenblatt, who has been instructor in English in Barnard since 1929, has resigned her position here to accept an assistant professorship of English in Brooklyn College.

Dr. Rosenblatt is a graduate of Barnard College in the Class of 1925. She went abroad to study, and after working in Paris and London received her doctorate from the University of Paris. Dr. Rosenblatt is one of the most gifted of the recent graduates of Barnard, and the College will miss her presence on its staff, but is pleased to see her ability recognized by this new appointment.

Save the Date

THE Alumnae Association is sponsoring an opera benefit at the Metropolitan on Friday afternoon, February 24, 1939. The opera will be "Thais," with Marjorie Lawrence and John Charles Thomas, and the proceeds are to be for Barnard scholarships.

Mabel Parsons is chairman of the Opera Benefit committee, and assisting her as chairmen of subcommittees are: patronesses, Mrs. Ogden Reid; boxes, Mrs. George Hellman; tickets, Mrs. Walter Grant Thomas. Alice Clingen is treasurer of the committee and Mrs. Percy Perkins, secretary. Further details will be in the November *Monthly*.

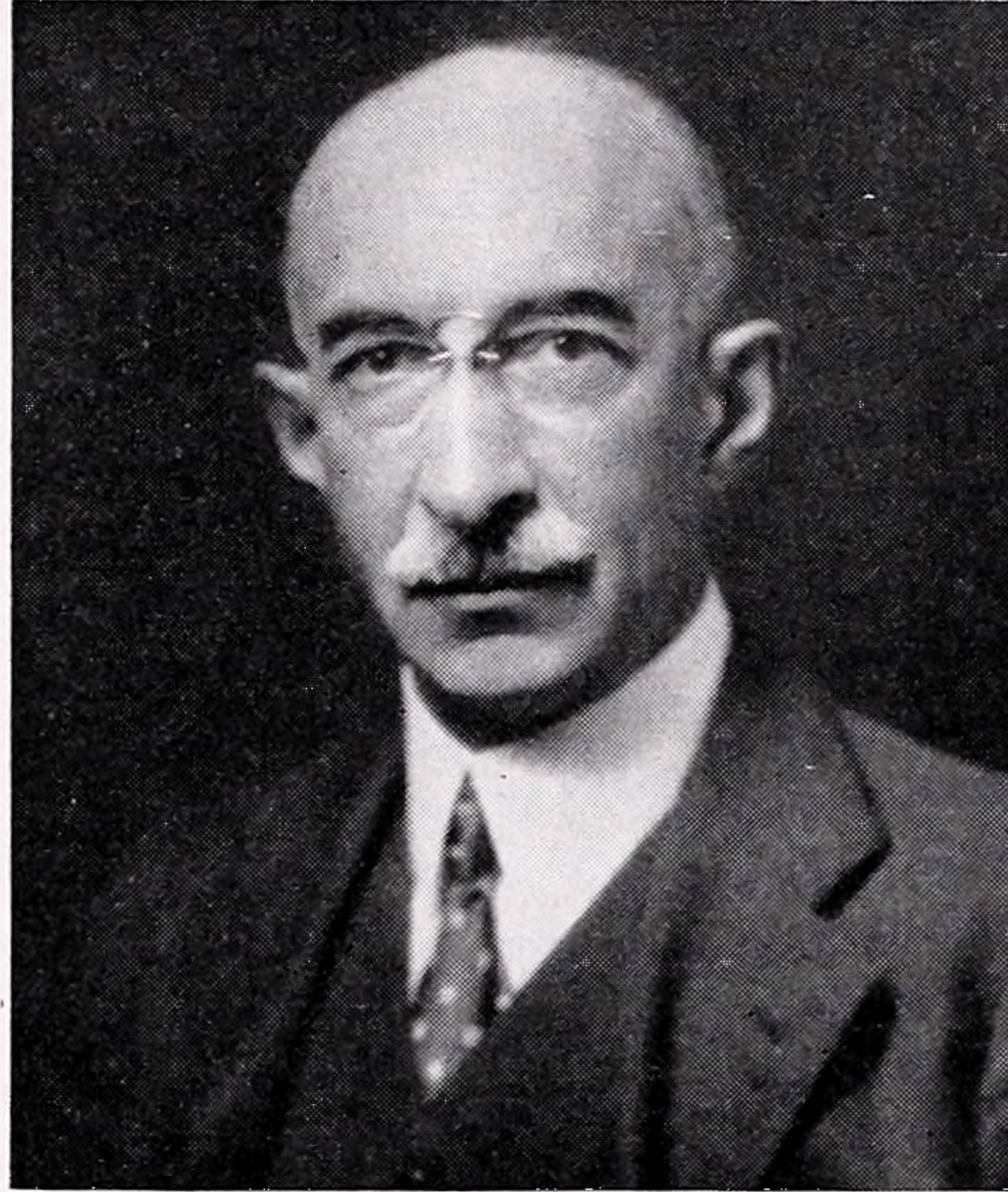


Dean Gildersleeve and Gertrude Hargrave Sharp, president of the class of 1927, chat in the Dean's office, which has been redecorated by the class as its decennial gift.

Barnard's Senior Professor

“ZOOLOGY 1-2 is my *raison d'etre*,” says Professor Crampton, and to the alumna who has taken this absorbing course his modest statement of his place in the Barnard world brings a quick, unreflecting assent. For, in the famous lectures delivered in his sonorous voice, with the remarkable vocabulary which forces his listeners to make constant use of the nearest dictionary, Professor Crampton teaches far more than the facts of vertebrate and invertebrate morphology, elementary physiology and the principles of genetics. It is a rare undergraduate who does not remodel her whole philosophy of life under the guidance of his concept of man's place in a well-ordered biological universe. Countless alumnae of all vintages are constantly heard to say that Professor Crampton's “Zo” was the important course they took in college.

But Professor Crampton has a number of *raisons d'etre*. His has been a long career of significant contributions to biological research, ever since the time when, just after his graduation from Columbia College at the astounding age of eighteen, he leaped into fame and glory by discovering that snails whose shells are dextrally or sinistrally coiled are determined as to direction of coil by the right-handedness or left-handedness of the twisting of the cells as the dividing egg enters the 8-cell stage. Still at an age when most scientists are beginning their graduate study, he performed the pioneer experiments in the now important field of insect transplantation, those of grafting moth pupae in different planes. Then began the work which has been his consuming interest during most of his life, the study of evolution as it takes place at the present in the field and in the laboratory. Taking the land snail *Partula* as his material, Professor Crampton made 16 expeditions to the Polynesian Islands and South America to study variation of this genus (think of the end-



Blackstone Studios

less fund of tall stories about his adventures in Polynesia with which he can regale his fellow members of the Explorers' Club!) The mass of data which he obtained constitutes one of the most interesting contributions ever made to the understanding of the dynamics of evolution, and the shells which he unromantically houses in a series of steel filing cases in his office in Milbank are known as one of the world's finest collections of specimens of a single genus of animals.

For the last eight years, Professor Crampton has been chiefly interested in the inheritance of shell coiling and of pigmentation in the water snail *Limnaea*. In white lab coat, cardboard eye shade and the pipe from which he is inseparable (one does not need to see him to know he has passed through the hall) he spends long hours in the old greenhouse on the roof of Milbank, where he cultures carefully pedigreed descendants of two Hawaiian strains of snails. From the tedious work of breeding and recording, there has emerged an interesting body of data bearing upon several genetical problems.

Many alumnae are aware that Professor Crampton served for many years in the important post of Curator of Invertebrates at the American Museum of Natural History in New York and that he is a Research Associate of the Carnegie Institution of Washington and of the Bishop Museum in Honolulu. But a public service which is known to few people is that which he gave our government when, as the equivalent of a present-day Brain Trustee, he was an advisor to the Wilson cabinet.

Despite his many achievements, Barnard's senior professor (although he is far from the retiring age) still considers his teaching of introductory zoology his most useful work. And the alumnae on whom he has had such a strong influence like to think he is right.

Katherine S. Brehme

Alumnae Projects

IF someone tells you that the Alumnae Office has been taken over by the undergrads, don't you believe it. The mistake will be understandable, though, because Page Johnston, new executive secretary of the Alumnae Association, graduated only a year ago, and Ruth Inscho Buchanan, her assistant, only last June.



Saks 34th St.
PAGE JOHNSTON

The girl with the brown eyes and the Southern charm is Miss Johnston. Alumnae who knew her last year as assistant secretary will tell you that in addition to being charming she is most efficient and helpful. If she is not available, by some chance, you'll find Mrs. Buchanan only too glad to stop changing alumnae addresses for a minute or two and to help you instead.

Drop in and meet Miss Johnston and Mrs. Buchanan!

Alumnae Tuesday Nights

FOR the second year, the Alumnae Association will sponsor a series of Tuesday night activities. To those who attended the classes last year this should be welcome news, and to those to whom it will be a new experience this winter, the following plans are offered:

Each Tuesday evening at eight o'clock, Barnard Hall will be opened to all alumnae. The physical education department will again hold its gym classes; and the cellar studio, the music room, and Odd Study will accommodate alumnae interested in sculpturing, glee club singing and "play-acting." Gena Tenney '33 has already promised to direct the Glee Club in her competent and delightful way, and it is hoped that Miss Gerrish and Miss Hamlin will be back to direct the drama and the clay-modeling classes. And on the second Tuesday of every month, the Conference Room will be the scene of a social hour unparalleled, it is hoped, in the annals of sociability.

Registration will take place in the Alumnae Office on the evening of October 11th and on the three succeeding Tuesdays. Only if the number of

registrations (\$7 per semester) guarantees the price of the instructor for the semester will the committee be able to promise to carry on. So come yourselves; bring your friends and some new ideas; bring suggestions as to other classes we might organize; bring your enthusiasm and your support.

Remember October 11th!

A Letter From the Thrift Shop Chairman

To Barnard Alumnae:

When, about one and one-half years ago, the Barnard Alumnae Association was asked to combine forces with the Social Service Committee of the Neurological Institute in opening a Thrift Shop, it entered its new venture with much enthusiasm but not a great deal of experience. People say one should live in a house at least a year before buying it. By the same token, we can feel that that first year has had its value in showing us the do's and don'ts of running such a shop. Barnard College owes a hearty vote of thanks to the many workers who contributed their time, labor, and rummage to the venture—in fact, it is on the strength of that support that the Alumnae Association has felt warranted in going on with the work this year.

Now, however, there has been a change of organization. Instead of sharing one-half the burdens and profits, we now share only one-eighth, since we are affiliated in the Prosperity Thrift Shop with the following units: Alice Hall Ali Memorial, Polyclinic Hospital, New York City Visiting Committee, Bethany Day Nursery, McCall Mission, Yorkville Community Center, and the Soldiers' and Sailors' Club.

Its affairs are managed by a board of directors, representative of all units, the officers of which are as follows:

President.....MRS. W. GUSTAVE TRIEST
Vice-President.....MRS. C. H. MATTLAGE
Treasurer.....MISS JEAN FAULKNER
Secretary.....MISS FREDERICK SHERRY

Charlotte Verlage Hamlin '11 is chairman of the Barnard committee; Isabel Morrison Stevens '12, chairman of volunteers; and Elizabeth Wright Hubbard '17, chairman of rummage.

The Prosperity Shop, with some fourteen years of experience behind it, is adequately installed at 1137 Third Avenue, near 67th Street, in charge of three paid workers—Miss Paulding, the manager; Mrs. Merrit, and Mrs. Giles—whose duty it is not only to run the shop, but to price, tag, and receive and acknowledge contributions. The shop is open from September first to July first, but during September it is run only by paid workers. Besides the two summer months of July and August, each organization is given two months' vacation when profits and expenses continue, but volunteer workers need not be on hand. Our rest periods this year are to be December and April. At least two volunteer workers are to be supplied by each unit for the morning, and two for the afternoon, though more are often necessary. The proceeds of Barnard sales belong to Barnard after her one-eighth share of the running expenses has been paid. For the time being, Saturday is to be our day at the shop, the hours from 9:30 to 4:30, though on other days during the week the shop is open until 5:30. When volunteers are unable to come at their allotted time they *must*, wherever possible, give twelve hours' notice. In case no substitute can be found, a paid worker at \$1.65 for a half day or \$3.10 for a full day, will take her place, her pay to be charged against the unfortunate unit.

It is surely not necessary to stress to the alumnae the great need for both volunteers and rummage. Volunteers should apply to Mrs. H. K. Stevens, 33 Washington Square West, or to Dr. Hubbard at 420 Riverside Drive. The requirements for rummage this year are somewhat different from those of last. Clothing is needed, of course, especially men's and children's, but it must be wearably clean or washable. Aside from the regular monthly half-price sales, there are to be special sales of particular types of merchandise—silver, fruits, antiques, lamps, bric-a-brac, glassware. In October, for example, they are considering featuring china. However, underwear, linens, shoes, hats, books, music, phonograph records, purses, radios, jewelry,—all these and many other things are most acceptable. Only magazines, very soiled clothing, and

badly broken furniture seem to be drugs on the market. That Barnard may get due credit for sales, all packages must be clearly labeled.

The matter of collecting rummage has grown increasingly difficult, as parking space has dwindled, so it would be a great help if as much merchandise as possible could be sent or taken directly to the shop. If that is not feasible, though, the best thing would be to call or notify the Barnard Alumnae Office, UNiversity 4-3200, extension 786. We hope again this year to have the generous support of the out-of-town clubs which served last year as collection centers for local donations.

More power to us all!

Charlotte Verlage Hamlin '11

"Monthly" Comment

ELVA FRENCH HALE '25, business manager of the *Monthly* since 1934, resigned last June. In her four years of service on the *Monthly* staff, her efforts to keep within the budget and to build up the volume of advertising in the face of the most adverse business conditions, were markedly successful. Last year she did splendid pioneer work on the Seven College advertising plan.

Now another budget than the *Monthly's* occupies Mrs. Hale's thoughts. Instead of printing costs and postage rates, the price of Kiddie Kars and college educations are burning questions in the Hale household. For just as this issue was going to press, Nancy French Hale (Barnard '54) made her appearance. We send to her and to her mother our best wishes.

Our new business manager is Grace Reining Updegrove '30, who is combining the work with that of Alumnae Fund secretary. After November 15th, she will be in the Alumnae Office Monday through Friday afternoons, when she will be equally glad to discuss Fund or *Monthly* business.

Dorothy Putney '25, advertising manager, may be reached at the Alumnae Office or care of Publication Associates, 505 Fifth Avenue, New York City. She will be glad to quote rates to any alumna wishing to use the *Monthly* as an advertising medium.

The editor holds office hours in the Alumnae Office on Mondays from 10 to 1 and Tuesdays from 2 to 4. At other times the Alumnae secretary can give information about *Monthly* business.

National Barnard Day

Saturday, November 19, 1938

An Advance Celebration of Barnard's Fiftieth Anniversary

COMMITTEES are being formed from Maine to California, from Washington to Texas, to arrange parties where alumnae and their friends will gather to hear Dean Gildersleeve speak over the National Broadcasting Company network sometime between four and six p.m., eastern standard time. The exact hour will be announced later. Miss Gildersleeve's subject will be: "Sending Girls to College—Why and How," and sharing in the discussion over the air will be Mrs. Alice Duer Miller, Mrs. Ogden Reid, and one or two other distinguished alumnae.

The purpose of this day is two-fold; first, to make the nation Barnard-conscious, and second, to raise money for Barnard scholarships. New York, Boston, Philadelphia, Chicago, Los Angeles and other cities are planning large meetings, but it is hoped

that in every town or village where there is even one alumna, she will gather her friends and relatives around the radio to listen to this Barnard program.

So many alumnae are engaged in enterprises far from their homes that it is difficult for the committee to know where graduates will be on November 19th. It will greatly assist them if alumnae outside the New York area will fill in the blank on page 24 of this issue, and mail it as soon as possible to Mrs. John Miles Thompson, chairman, Barnard College, Columbia University, New York.

The committee assisting Mrs. Thompson are: Mrs. Frank Altschul, Mrs. Gavin MacBain, Miss Mabel Parsons, Mrs. Percy Perkins, Miss Helen Erskine, Miss Helen Kennedy Stevens, Mrs. Alfred F. Loomis, ex-officio.

Meetings are being arranged in the following places with the help of these alumnae:—

Hot Springs, Arkansas

Los Angeles, California

Denver, Colorado

Greenwich and
Stamford, Connecticut

Hartford, Connecticut

Wilmington and
Claymont, Delaware

Chicago and
Winnetka, Illinois

Indianapolis, Indiana

Des Moines, Iowa

Wichita, Kansas

Louisville, Kentucky
Portland, Maine

Boston, Massachusetts

Mrs. Charles Garratt '28
(Lucile Wahlig)

Mrs. Ely Parker Spalding '97
(Adaline Wheelock)

Miss Jean Ware '33

Mrs. Nathaniel Seeley '16
(Louise Talbot)

Mrs. Charles Whitney Page '18
(Isabelle Murtland)

Miss Sarah Sturges '14

Mrs. Oscar Hayward '07
(Muriel Valentine)

Mrs. R. Hartley Sherwood '06
(Marjorie Ferguson Brown)

Mrs. Henry K. Parsons '30
(Mary M. Dodson)

Mrs. Arthur Eberly '17
(Marion Stevens)

Miss Molly B. T. Coyle '12

Mrs. Robert Hale '11
(Agnes Burke)

Mrs. Thomas R. Nunan '11
(Olga K. Ihlseng)

Baltimore, Maryland	Mrs. L. Emmett Holt, Jr. '18 (Olivia Cauldwell)
Montclair, New Jersey	Mrs. Adam Leroy Jones '05 (Lily S. Murray)
	Mrs. Harold Osborne '19 (Dorothy Brockway)
Newark, New Jersey	Miss Katherine Coffey '22
Princeton, New Jersey	Mrs. Edward Earle '17 (Beatrice Lowndes)
Orange, New Jersey	Mrs. Edward Parker '16 (Helen C. Youngs)
	Mrs. Herbert P. Woodward '27 Harriette N. Blachly)
Plainfield, New Jersey	Mrs. Robert P. Coates '34 (Alice L. Canoune)
Huntington, Long Island	Mrs. Edward S. Blagden '15 (Lois W. Martin)
Baldwin, Long Island	Mrs. William Prescott White '29 (Marian Churchill)
Westchester County, New York	Mrs. Gavin MacBain '34 (Margaret Gristede)
	Mrs. L. Brewster Smith '06 (Natalie I. Shinn)
Staten Island, New York	Miss Mildred Kammerer '19
Brooklyn, New York	Mrs. Paul Welch '21 (Mildred C. Petersen)
New York City	Mrs. Willard Stoughton '06 (May Newland)
Barnard College, New York City	Miss Barbara Ridgway '39
Portland, Oregon	Miss Jane Bell '39
	Mrs. John Moore '12 (Florence Rees)
Philadelphia, Pennsylvania	Mrs. Paul M. Phillips '19 (Carolyn Whipple)
	Mrs. L. T. Ruprecht
Nashville, Tennessee	Mrs. Will Manier, Jr. '16 (Ruth Salom)
Dallas, Texas	Mrs. John Owen Beaty '19 (Josephine M. Powell)
	Mrs. Henry Edward Catto '22 (Maurine Halsell)
Richmond, Virginia	Miss Champe Carter Winston '36
Brattleboro, Vermont	Mrs. Frederic F. Van de Water '09 (Eleanor Gay)
Washington, D. C.	Mrs. David Barr '17 (Elinor Sachs)

Parties will be given in the following places but final arrangements have not yet been made: Alabama; Arizona; Louisiana; New Haven, Connecticut; Columbia, Missouri; Chapel Hill, North Carolina and New Mexico.

Please remember to fill in the blank on page 24.

From the Fund Chairman==Lucy Morgenthau Heineman

THE Alumnae Fund has completed another year, its sixth. The aim this year was to secure more contributors, as conditions in the world in general were such that we could not hope for large amounts from many alumnae. We increased the number of individual contributors by fifty-one, making a total of 994. However, the amount received from them was \$1,884.69 less than last year.

I believe that in giving the Fund figures, such figures should be divided so that the main emphasis is always on the annual contributors, for it is this group which is the mainstay of alumnae giving; and the purpose of the Fund, both from the point of view of the central committee and the class representatives, should be to build up the number of annual contributors and the size of the average gift. In the normal course of events, there will be years when the total of the Alumnae Fund will run very high due to money brought in either through benefits, legacies, unusually large class gifts, and special gifts from individual alumnae. We must not figure these in the same way that we do our annual individual contributions. For if we do so, we will discourage the Fund chairman and her co-workers in a year when no such gifts

are forthcoming.

It might be interesting to note the progress of the Fund since its inception with respect to contributions from individuals:

1933	\$6,626.00
1934	5,128.00
1935	6,389.00
1936	9,176.00
1937	13,498.00
1938	11,614.00

Although we did receive contributions from 48 new donors of the 3,467 appealed to and from 337 former donors of the 1,788 appealed to as a result of the general appeal, the great bulk of our money came in after the class representatives sent out a follow-up letter. I want to take this opportunity to thank them again for the way in which they carried out their task.

The work of the Fund has been all engrossing and I feel that even with the amount of time which I have spent this year I am still woefully ignorant of many of its phases. Had I not been able to turn constantly to the two former chairmen, Mrs. Lowther and Miss Travis, I would never have been able to accomplish what little I have.

Allocation of Alumnae Contributions, 1937=1938

Land Fund	\$11,948.49
Student Loan	1,970.00
Scholarships	2,123.00
Permanent Funds	1,000.00
Special Purposes	1,394.00
	<hr/>
	\$18,435.49

1938 Reunion Class Totals

Below are listed the cumulative totals of all gifts to the Fund from 1938 Reunion classes, including individual contributions from members of the classes and gifts voted from class treasuries and benefits.

	1934	1935	1936	1937	1938	Total
1893	\$ 35.00	\$ 7.00	\$ 30.00	\$ 168.00	\$ 35.00	\$ 275.00
1898	65.00	90.00	110.00	60.00	700.00	1,025.00
1903	127.00	211.43	192.50	1,653.13	603.00	2,787.06
1908	277.00	51.00	108.00	246.00	623.00	1,305.00
1913	139.00	296.00	205.00	485.00	4,246.00	5,371.00
1918	123.50	189.00	262.00	1,406.50	709.00	2,690.00
1923	95.50	207.25	561.25	542.00	386.25	1,792.25
1928	137.50	189.00	124.00	161.00	350.50	962.00
1933	92.00	125.50	85.50	276.00	219.50	798.50

Report of the Alumnae Fund Committee for 1937-1938

THE ANNUAL ALUMNAE FUND

Individual Gifts from 994 Donors\$11,613.96

Gifts from Class Treasuries

1902.....	\$ 10.00*	
1903.....	60.00	
1908.....	237.00	
1909.....	101.79	
1912.....	158.14	
1913.....	2,000.00	
1922.....	150.00	
1924.....	25.00	
1930.....	12.60	
1938.....	250.00	3,004.53

From Barnard College Clubs

Bergen, for Scholarship.....	200.00	
Brooklyn, for Land Fund.....	50.00*	
Buffalo, for Land Fund.....	32.00	
Chicago, for Land Fund.....	25.00	
Dallas, for Land Fund.....	140.00	
Los Angeles, for Land Fund.....	65.00	
New York, for Scholarship.....	700.00	
Staten Island, for Land Fund.....	205.00*	
Westchester, for Scholarship.....	400.00	1,817.00

Associate Alumnae of Barnard College for Barnard Camp Land 500.00

Alpha Zeta Club of New York, for Alpha Zeta Scholarship Fund 500.00

The Clara Bittenweiser Unger Memorial Fund 1,000.00

TOTAL THROUGH THE ANNUAL ALUMNAE FUND\$18,435.49

Note: All class and club gifts to Barnard are listed in the Alumnae Fund.

**Indicates those gifts made through the Fiftieth Anniversary Fund.*

ALUMNAE GIFTS THROUGH THE FIFTIETH ANNIVERSARY FUND

Scholarship Fund\$ 250.00

The Adam Leroy Jones Memorial Fund..... 1,500.00

For English Speech Instruction..... 500.00

The Charles Knapp Memorial Fund..... 418.00

General Endowment 250.00

For the Land Fund 2,052.62

TOTAL THROUGH THE FIFTIETH ANNIVERSARY FUND\$ 4,970.62

GRAND TOTAL \$23,406.11

Class Totals in 1937=1938

CLASS	Number of Members	Number of Donors	Individual Contributions	Class Gifts	Total
1893	6	3	\$ 35.00	—	\$ 35.00
1894	3	2	20.00	—	20.00
1895	6	2	20.00	—	20.00
1896	16	3	25.00	—	25.00
1897	12	7	61.00	—	61.00
1898	15	17	700.00	—	700.00
1899	15	8	953.00	—	953.00
1900	27	14	208.00	—	208.00
1901	42	16	278.00	—	278.00
1902	36	10	344.00	\$ 10.00	354.00
1903	53	26	543.00	60.00	603.00
1904	62	15	126.00	—	126.00
1905	78	28	2,051.00	—	2,051.00
1906	72	14	594.50	—	594.50
1907	69	19	1,332.95	—	1,332.95
1908	91	29	386.00	237.00	623.00
1909	96	68	1,213.21	101.79	1,315.00
1910	81	14	246.00	—	246.00
1911	104	17	219.00	—	219.00
1912	123	10	127.00	158.14	285.14
1913	119	45	2,246.00	2,000.00	4,246.00
1914	122	21	310.00	—	310.00
1915	132	34	305.00	—	305.00
1916	120	15	145.00	—	145.00
1917	155	48	650.00	—	650.00
1918	147	46	709.00	—	709.00
1919	143	22	217.00	—	217.00
1920	143	28	336.00	—	336.00
1921	166	18	135.50	—	135.50
1922	161	14	143.50	150.00	293.50
1923	156	49	386.25	—	386.25
1924	187	19	88.00	25.00	113.00
1925	185	30	449.00	—	449.00
1926	203	20	96.00	—	96.00
1927	230	15	79.00	—	79.00
1928	185	47	350.00	—	350.00
1929	268	30	262.00	—	262.00
1930	239	26	123.50	12.60	136.10
1931*	213	6	39.00	—	39.00
1932	231	12	67.50	—	67.50
1933	235	46	219.50	—	219.50
1934	201	16	102.00	—	102.00
1935	205	20	113.00	—	113.00
1936	214	17	93.00	—	93.00
1937	210	35	91.00	—	91.00
1938	234	—	—	250.00	250.00

*In addition, some 70 members of 1931 are contributing annually to a special 10th year gift pledged by the College prior to the inception of the Alumnae Fund

Alumnae Contributors in 1937-1938

ANNUAL ALUMNAE FUND—FIFTIETH ANNIVERSARY FUND

1893	3 Donors	\$35	1902	10 Donors	\$354
Louise Stabler Parker	Mary Stuart Pullman		<i>Given in memory of Edna Chapin Close</i>		
Alice Kohn Pollitzer			Elizabeth Allen	Harriet Burton Laidlaw	
1894	2 Donors	\$20	Mary Hall Bates	Susan La Monte	
Estella Demarest	Eliza Jones		Eleanor Van Cott Brodie	Janet Seibert McCastline	
1895	2 Donors	\$20	Carita Spencer Daniell	Ada Neiswender	
Mabel Parsons	Florence Colgate Speranza		Edith Ingalls	Frances Berkeley Young	
1896	3 Donors	\$25	1903	26 Donors	\$603
Ada Hart Arnold	Jessie Wendover		Gulielma Alsop	Madeleine Skinner McLaren	
Anna Mellick			Helen King Blakely	Jean Miller	
1897	7 Donors	\$61	Mary Moen Brown	Laura Van Cise Miller	
Adelaide Brown	Louise Shaw Richards		Sadie Nones Bullowa	Mary Harrison Morse	
Estelle Elkus Galston	Aline Stratford		Marguerite Siedler Colie	Elsa Herzfeld Naumberg	
Anna Locke	Maude Wilcox Van Riper		Anna Ware Collins	Katherine Poole	
Mary More			Irma Stern de Graffenried	Helen Rogers Reid	
1898	17 Donors	\$700	Mary Groff	Florence Cheesman Remer	
<i>\$650 of this amount for Student Loan; \$50 for Land Fund</i>			Gertrude Clark Hitchcock	Marion Latham Richards	
Anonymous	Susan Myers		Clare Howard	Lucy Sherman	
<i>In memory of</i>	Alice Perkins		Elsbeth Kroeber	Helen Cohen Stockwell	
<i>Edith Boetzkes Backus</i>	Stella Stern Perry		Adele Lewisohn Lehman	Helen Tanzer	
Anne Hall Curdy	Jane Sargent		I. Hope Mackenzie	Elizabeth Thompson	
Louise De Hart Fuller	Roselle Lathrop Shields		1904	15 Donors	\$126
Katharine Hawkins	Rosalie Bloomingdale Sperry		Caroline Lexow Babcock	Romola Lyon Lyons	
Jessie Hughan	Anna Von Sholly		Florence Beeckman	Rose McCormick	
Anna E. H. Meyer	Elizabeth Wyman		Flora Campbell	Charlotte Morgan	
<i>In memory of</i>	Ada Watterson Yerkes		Katharine Doty	Emma Enright Neilson	
<i>Helen St. Clair Mullan</i>			May Parker Eggleston	Harriet Hill Puryear	
1899	8 Donors	\$953	Helen Erskine	Mildred Adey Redfield	
Amelia Wohlfarth Buck	Elsie Kupfer		Doris Gallert	Ruth Stern Schloss	
Agnes Dickson	Adelaide Hoffman Marvin		Lucy Embury Hubbell		
Virginia Gildersleeve	Marjorie Jacobi McAneny		1905	28 Donors	\$2,051
Grace Goodale	Alice Duer Miller		Ruth Reeder Arbuckle	Lily Murray Jones	
1900	14 Donors	\$208	Florence Beers	Frances Purdon Leavitt	
Theodora Baldwin	Esther Keagey		Alice Bernheim	Pamela Lyall	
Margaret Blossom	Eleanor Keller		Fannibelle Leland Brown	Clarissa Harben Macavoy	
Mildred Hubbard Cornish	Virginia Newcomb		Margaret Byrne	Florence Meyer	
Ellinor Reiley Endicott	Florence Sill		Bessie Scott Conant	Helen Palliser	
Jane Gillespy	Katharine Van Horne		Helen Cooley	Laura Parker	
Emma Sandford Herendeen	Julia Watkins		Harriet Day	Nina Schultz Pretzfeld	
Sara Straus Hess	Mary Goldsborough West		Grace Farrelly	Estate of Anna C. Reiley	
1901	16 Donors	\$278	Sallie Fletcher	Marguerite Smith	
Elizabeth Roberts Compton	Mabel Elting McLaury		Ethel Hendricks Frank	Arrietta Snyder	
Isabella Cooper	Mary Morrison		Agnes Durant Halsey	Hilda Staber	
Pauline Dederer	Olive Barrick Rowland		Edith Handy	Edith Welle	
Mary Eaton Glass	Helen Catlin Russell		Edwina Levy Hayman	Blanche Reitlinger Wolff	
Hilda Josephthal Hellman	Meta Pollak Sachs		1906	14 Donors	\$594.50
Clara Hudson	Sarah Schuyler		Elizabeth Bradford	Elsie Ehrich	
Alma Wallach Liebmann	Mary Fisher Torrance		Dorothy Brewster	Evelyn Goldsmith Kessel	
Amy Loveman	Cordelia Wendt		Mabel Browne	Josephine Paddock	
			Bessie Lewis Cooper	Catharine Post	
			Katharine Darrin	Elizabeth Post	
			Nellie Darling Dickerson	May Newland Stoughton	
			Augusta Salik Dublin	Irene Reeder Van Ness	

BARNARD COLLEGE ALUMNAE MONTHLY

1907	19 Donors	\$1,332.95	Ruth Stowell Edith Talpey Lucy Thompson Laura Turnbull Eleanor Gay Van de Water Anna Ver Planck Dorothy Calman Wallerstein	Helen Scheuer Wallerstein Helen Aiguier Warner Ethel Weston Welch Mathilde Abraham Wolff Jane Wylie Helene Boas Yampolsky	
Charlotte Oesterlein Abraham Helen Goodhart Altschul Louise Rapp Brown Elizabeth Lord Dumm Florence Gordon Irma Jellenik Green Emma Lay Harris Helene Harvitt Constance Strauss Lewisohn Louise Odencrantz	Josephine Pratt Mary Reardon Beatrice Herzfeld Reichenbach Eva Jacobs Rich Grace Bernheimer Snellenburg Helen Shoninger Tanenbaum Evangeline Cole Wehncke Edna Brown Wherry Sophie Woodman		<i>The following groups also contributed to the Memorial Fund:</i> Family of Josephine O'Brien Teachers of Bay Ridge High School	Parent-Teachers Association of P. S. 117 Teachers and Janitorial Staff of P. S. 117	
1908	29 Donors	\$623	1910	14 Donors	\$246
Clairette Armstrong Marguerite Newland Barron Martha Boardman Mary Budds Marion Crowell Elizabeth Fox De Cou Mary Maxon Dorrance Ellen O'Gorman Duffy Clara Eaton Agnes Dwyer Garbe Eleanor Hunsdon Grady Ada Muller Griesmaier Pauline Steinberg Hirschfeld Jessie Houston	Eleanor Hufeland Marie Hufeland Anna Kerner Florence Wolff Klaber Gertrude Wells Marburg Agnes Miller Josephine Cooke Pashley Mabel Peterson Paul Elsie Quinby Gladys Quinby Anne Rothenberg Rosenbaum Ethel Everett Smith Henrietta Messenger Sutton Annie Turnbull Margaret Yates		Anonymous Harriet Bishop Dorothy Kirchwey Brown Bessie Holzman Greenwald Helen Worrall Haight Agnes Shaw Hussey Vora Jaques	Frances Burger Kopp Adelaide Loehrsen Florence Read Miles Mabel McCann Molloy Clarice Auerbach Rosenthal Edna Heller Salomon Ellen Maison Stetler	
1909	68 Donors	\$1,315	1911	17 Donors	\$219
<i>\$1,300 of this amount was presented to the College as The Josephine G. O'Brien Memorial Fund for the purpose of Student Loan</i>			Emilie Bruning Emily Burr Therese Cassel Helen Crandell Edith Deacon Estelle Ellison Georgiana Sandford Gilman Addie Morgenstern Green Florrie Holzwasser	Ida Beck Karlin Edna McKeever Adele Duncan McKeown Louise Ockers Madeleine Hirsh Ottenberg Helen Runyon Mildred Sanborn Marian Oberndorfer Zucker	
Elsie Smith Bard Frances Ingalls Beggs Helen Newbold Black Josephine Dempsey Borkes Marion Boyd Emma Bugbee Gladys Arkenburgh Chandler Julia Goldberg Crone Una Logan Dale Margie Dann Edwards Hilda Wood Eidson Jessie Levy Feist Helen Phillips Frank Antoinette Fransioli Lilian Closson Gill Mary Godley Mildred Woodhull Good Ethel Goodwin Alice Grant Blanche Samek Gutlohn Eva vom Baur Hansl Elinor Hastings Cecile DeBouy Herrick Ethel Nyitray Herrmann May Stark Hildesley Rita Hochheimer Ethel Hodson	Hannah Falk Hofheimer Jennie Hubbard Jacobus Alice Jaggard Edna Scales Jamieson Margaret Kenney Jensen Lois Westaway Jones Lois Kerr Olga Rilke Landers Ethel Ivemey Langmuir Evelyn Holt Lowry Florence Wyeth McLean Myra McLean Helen McPherson Ella Oppenheim Moos Hortense Murch Owen Mary Swenson Palmer Edith Josephi Phillips Beatrice Beekman Ravner Jessie Cochran Reymond Adelaide Richardson Sara Rome Fannie Rosenfelder Dean Smith Schloss Edith Seguine Herlinda Smithers Seris Edna Cassebeer Sheffield Adelaide Smithers Edna Phillips Stern		1912	10 Donors	\$285.14
			Mildred Hodges Allen Cora Thees Crawford Alice Evans Phebe Hoffman Keyes Dorothea Mahon Lissberger	Florence Lowther Lillian MacDonald Isabel McKenzie Helen Plummer Louise Nyitray Trueblood	
			1913	45 Donors	\$4,246
			Elizabeth Donovan Bailly Marietta Gless Barkhorn Edith Rosenblatt Barnett Gladys Hasberg Baum Varian White Blumberg Anna Salzman Cohn Mary Stewart Colley Alberta Edell Aline Stern Erlanger Ethel Webb Faulkner Edith Fleming Esther Burgess Hadsell Edith Halfpenny Gertrude Morris Hannan Marion Newman Hess Dorothy Cheesman Howe Edith Jones <i>In memory of</i> <i>Pauline Horkheimer</i> <i>Lazaron</i> Joan Sperling Lewinson Priscilla Lockwood Loomis	Dorothy Kinch Luster Miriam Grenelle Mandalian Grace Brown Manning Etta Fox Markham Lillian Waring McElvare Marion Wolff Meyer Amelia Mumford Mary Mumford Katherine Noble Mollie Katz Perlman Harriet Poore Lucy Powell Theresa Lint Rappaport Lillie Reilly Viola Turck Ryder Augusta Magid Sachs Harriet Seibert Eleanor Oerzen Sperry Gladys Slade Thompson <i>In memory of</i> <i>Clara Buttenweiser Unger</i> <i>(two contributions)</i>	

Mrs. Fannie Van Raalte
(mother of Jeanette Van
Raalte Levison)

Mary Voyse
Margaret Kelley Walsh
Louise Bartling Wiedhopf

In addition to the above contributions, the following 37 members of the Class of 1917 gave \$440 which is to be used toward the salary of an advisor to students, or her secretary.

1914 21 Donors \$310

Edith Mulhall Achilles	Elizabeth Macauley
Mary Kenny Allen	Ruth Manser
Beatrice Heinemann	Gladys Bateman Mitchell
Deschere	Jean Mochle
Helen Downes	Lucie Petri
Mary Walker Edwards	Elisabeth Schmidt
Edna Hess Goldsmith	Clara Shackleton
Edith Davis Haldimand	Gertrude Greenwald Strauss
Esther Hawes	Sarah Sturges
Marion Hoey	Iphigene Ochs Sulzberger
Rita Hilborn Hopf	Emily Lowndes Van Tassel

1915 34 Donors \$305

Edith Stiles Banker	Helen Misch Kemp
Linnea Bauhan	Ann Kuttner
Fredericka Belknap	Emily Lambert
Eleanore Louria Blum	Sarah Butler Lawrence
Marion Borden	Lucy Cogan Lazarus
Sophie Bulow	Anna Kong Mei
In memory of	Edna Astruck Merson
Margaret Meyer Cohen	Elizabeth Palmer
(two contributions)	Grace Ellinger Rosenthal
Ruth Evans	Lillian Jackson Sullebarger
Estelle Krause Goldsmith	Elise Tobin
Ruth Graae	Isabel Totten
Edith Hardwick	Helen Blumenthal Valentine
Lucy Morgenthau Heineman	Alice Webber
Rosalie Nathan Hendricks	Ray Levi Weiss
Dorothy Stanbrough Hillas	Katharine Williams
Margaret Pollitzer Hoben	Fannie Ansorge Zamkin
Dorothy Skinker Hooker	

1916 15 Donors \$145

Marie Kellner Berman	Catherine McEntegart
Evelyn Haring Blanchard	Dorothy Reaser Roberts
Dorothy Blondel	Dorothy Myers Sayward
Margaret King Eddy	Helen Rose Scheuer
Dorothy Hall	Mary Powell Tibbets
Mabel Lee	Rita Hecht Weinberger
Ruth Salom Manier	Katharine McGiffert Wright
Mabel Wells McAnney	

1917 23 Donors \$210

Gertrude Adelstein	Elizabeth Wright Hubbard
Helen Bausch Bateman	Edith Morgan King
Rhoda Benham	Cornelia Geer LeBoutillier
Beatrice Burrows	Freda Wobber Marden
Anna Hermann Cole	Amanda Schulte McNair
Beatrice Lowndes Earle	Maude Minahan
Marion Stevens Eberly	Viola Teepe Norton
Cora Morris Ehrenclou	Ruth Wheeler Nutt
Anita Frenzel	Ada Reid
Eleanor Wilkens	Sabina Rogers
Graefenecker	Frances Krasnow Thau
Ethel Gray	Kathryn Kahn Wolbarst

Gertrude Adelstein
Ruth Jennings Anderson
Rhoda Benham
Ruth Benjamin
Beatrice Burrows
Anna Hermann Cole
Dorothea Curnow Dashiell
Evelyn Davis
Sara Lewin Diska
Ida Klausner Dubin
Margaret Moses Fellows
Anita Frenzel
Evelyn Cahen Friend
Eleanor Wilkens
Graefenecker
Ethel Gray
Elizabeth Wright Hubbard
Balbina Johnson
Grace Diercks Kaas
Charlotte Martens Lee

Florence Oppenheimer
Lemaire
Edith Cahen Lowenfels
Marguerite Mackey
Freda Wobber Marden
Amanda Schulte McNair
Viola Teepe Norton
Lenore Gunzendorfer
Oppenheimer
Gladys Palmer
Marion La Fountain Peck
Katharine Wainwright
Salvage
Irma Hahn Schuster
Irma Meyer Serphos
Rose Ellis Shapiro
Hilda Rau Slauson
Paula Bernholz Smyth
Frances Krasnow Thau
Sally Bennett Voorhies
Babette D. Yarmolinsky

1918 46 Donors \$709

Anonymous	Margaret Rothschild
Marion McCaffrey Backus	Katzenstein
Mary Barber	Hedwig Koenig
Edmere Cabana Barcellona	Isabel Foote Leavenworth
Helen Purdy Beale	Helen MacLachlan
Edith Baumann Benedict	Ethel Mott Morgan
Helen Pierce Broderick	Mary Murphy
Elsa Grimm Bunn	Dorothy Oak
Edith Mook Craig	Louise Oberle
Helena Shine Dohrenwend	Isabel Murtland Page
Esther Sutton Elliott	Bertha Fischel Rafsky
Margaret Sayford Fellows	Helen Grayson Rafton
Charlotte Dickson Fisher	Eva Reinke
Marie Bernholz Flynn	Aline Sanborn
Lucile Keeler Fuller	Margaret Schlauch
Mary Welleck Garretson	Dora Kahn Seldin
Margaret Giddings	Anna Irby Stephens
Mildred Blout Goetz	Helen Stevens
Esther Schiff Goldfrank	Florence Barber Swikart
Anna Gross	Marion Washburn Towner
Natalie Plough Harris	Dorothy Graffe Van Doren
Frances Haynes	Marion Levy Wolff
Dorothy Keck Haywood	Martha Miller Young
Elizabeth Terribery Hoyt	

1919 22 Donors \$217

Blanche Stroock Bacharach	Lucy Hayner Kurrelmeyer
Myrrha Wesendonck Borum	Emilie Young Muzzey
Mary Campbell	Dorothy Brockway Osborne
Cornelia Carey	Edith Lowenstein Rossbach
Constance Lambert Doepel	Helen Saunders
Dorothy Morgenthau Eaton	Janet Meneely Shepard
Margaret Gillespie	Helen Slocum
Lillian Touroff Glueck	Gertrude Geer Talcott
Sophie Koerner Gottlieb	Teresa Tusa
Lucile Wolf Heming	Jeanne Ballot Winham
Mildred Kammerer	Julia Treacy Wintjen

BARNARD COLLEGE ALUMNAE MONTHLY

1920	28 Donors	\$336	1924	19 Donors	\$113
Elizabeth Armstrong	Marjorie Lockhart		Frieda Berliner	Henriette Spingarn Kameron	
Evelyn Baldwin	Felice Jarecky Louria		Edna Trull Bird	Barbara Kruger	
Elizabeth Hobe Burnell	Helen Krigsman Mayers		Mary Bradley	Louise Lewis	
Teresa Carbonara	Ethel McLean		Fanny Steinschneider Clark	Janet Martin	
Winifred Irwin Clapp	Margaret Myers		Viola Corrigan	Dorothy Marvin	
Rosina Lynn Geissler	Amy Raynor		Lilyan Stokes Darlington	Elizabeth Price Richards	
Dorothy Burne Goebel	Helen Calhoun Reik		Louise Baker French	Nellie Jacob Schelling	
Tekla Landauer Gottlieb	Gertrude Ressemeyer		Elizabeth Waterman Gilboy	Gertrude Marks Veit	
Marion Kaufmann	Janet Robb		Nelle Weathers Holmes	Adele Bazinet Vigneron	
Haldenstein	Florence Schaeffer		Grace Kahrs		
Helen Hicks Healy	Dorothy Robb Sultzer				
Juliette Meylan Henderson	Mary Sutton		1925	30 Donors	\$449
Anne Hopkins	Marion Travis		Henrietta Apfel	Maud Cabot Morgan	
Josephine MacDonald	Marie Uhrbrock		Rosemary Baltz	Meta Hailparn Morrison	
Laprese	Margaret Wilkens		Bertha Bayer	Edna Peterson	
			Louise Brush	Thora Plitt	
1921	18 Donors	\$135.50	Viola Travis Crawford	Margaret Melosh Rusch	
Edyth Ahrens	Marie Luckenbacher		Eleanor Kapp Darby	Florence Kelsey Schleicher	
Mae Belle Beith	Frances Marlatt		Miriam Craiglow Daugherty	Katharine Browne Stehle	
Gladys Van Brunt	Ada Beney Mirlin		Alice Demerjian	Elizabeth Stemple	
Bigongiari	Ethel Ramage		Julia Goeltz	Gene Pertak Storms	
Dorothy Falk Breitenfeld	Marion Groehl Schneider		Elva French Hale	Henrietta Swope	
Alice Cossow	Mary Scott		Mabel Satterlee Ingalls	Alice Mace Vaughan	
Thelma De Graff	Pauline Taylor		Helen Kammerer	Marion Mettler Warner	
Marion Burroughs Hamilton	Lillian Horn Weiss		Naomi Lubell	Phoebe Wilcox	
Mary Jennings	Mildred Peterson Welch		Viola Manderfeld	Helen Yard	
Laena Kahn			Pearl Bernstein Max	Fern Yates	
1922	14 Donors	\$293.50	1926	20 Donors	\$96
Anonymous	Lila North		Eleanor Antell	Charlotte Greene	
Eleanore Starke Battey	Isabel Rathborne		Eleanor Newcomer Bratley	Elinor Hillyer	
Marie Gregory Eckhardt	Pearl Wachman Sherman		Florence Andreen	Bryna Mason Lieberman	
Eva Glassbrook	Mildred Uhrbrock		Brinckerhoff	Renee Fulton Mazer	
Elisabeth Harlow	Christine Reynolds Wegel		Marion Burrough	Marian Mansfield Mossman	
Margot Emerson Manville	Edna Wetterer		Marjorie Turner Callahan	Dorothy Ashworth Nathan	
Florence Myers	Evelyn Orne Young		Iona Eccles Comstock	Edna Ruckner	
			Marie Campbell de Riemer	Winifred Shelton	
			<i>In memory of</i>	Selma Shultz	
			<i>Norma Loewenstein</i>	Margery Skeats	
			<i>Drabkin</i>	Lillian Wilson	
			Rita de Lodyguine Faust		
1923	49 Donors	\$386.25	1927	15 Donors	\$79
Maydell Alderman	Ruth Lustbader Israel		Janet Solomons Behrman	Harriet Gardiner	
Margaret Arnold	Dorothy Maloney Johnson		Barbara Schieffelin	Roslyn Schlesinger Salomon	
Mildred Black	Mildred Kasner Joseph		Bosanquet	Elisabeth Merk Scofield	
Alice Boehringer	Agnes MacDonald		Corinne Amerman Brehmer	Gertrude Hargrave Sharp	
Jean Murray Craig	Ruth Prince Mack		Helen van Dyck Brown	Kate Eisig Tode	
Yvonne Moen Cumerford	Gertrude Simpson Magaw		Bessie Burgemeister	Nan Mace Vaughan	
Katherine Hankinson	Dorothy Manning		Annette Decker	Camilla Cowan von der	
Cummings	Eleanor Marples		Mildred Bisselle Fewlass	Heyde	
Edythe Sheehan Dineen	Marguerite Loud McAneny		Maude French		
May Donahue	Anita Hughes Meyer				
Irene Lewis Donaldson	Edna Moreau				
Winifred Dunbrack	Effie Morehouse				
Mary Slaughter Emerson	Alice Burbank Rhoads				
Agnes Purdy Faile	Margaret Miller Rogers				
Dorothy Roman Feldman	Helen Pattenden Rowell				
Emily Martens Ford	Eloise Hocter Sage				
Mary Foxell	Elizabeth Stauffer				
Jessie Beers Galloway	Estella Raphael Steiner				
Emily Trantum Gates	Helen Pless Steiner				
Lois Strong Gaudin	Pauline Fulcher Stone				
Helen Gray	Irene Bowman Taylor				
Nagla LafLoofy Hafely	Ruth McIlvaine Voorhees				
Ruth Strauss Hanauer	Hazel Dean Warren				
Elsa Hattorff	Margaret Bowtell Wetherbee				
Elizabeth Klein Isaacs	Mary White				
			1928	47 Donors	\$350.50
			Beatrice Tinson Alrich	Margaret Davidson	
			Ruth Van Duzee Ashley	Martha Davis	
			Gabrielle Asset	Hilda Muggli Deisroth	
			Florence Beaujean	Helen Hope Dibbell	
			Ruth Greenwald Citron	Eva Shumway Dickie	
			Marguerite McCloskey	Kathleen Dunn	
			Coleman	Everita Edes	
			Helen Johnson Coshland	Lucy Hunt Edgar	

Marie Eichelberger Ruth Richards Eisenstein Katherine Eyerly Mary Marden Fitch Janet Brodie Flint Dorothy Fogel Anne Anastasi Foley Faith Fraser Florence Rubin Garfunkel Mary Hooke Goodwin Betty Susman Griffin Elsa Neuberger Grossman Sidney Stemmons Jacot Catherine Thomas Jersild Mary Johnson Althea Goeltz Jones	Florence Levin Kandell Constance Rouillion Keppel May Friedman Lumsden Alice Ittner Macauley Edith Colvin Mayers Sue Osmotherly Kathryn King Pease Gertrude Smith Pfeiffer Janet Schubert Florence Spiltoir Smith Dorothy Stickle Harriet Tyng Martha Boynton Wheeler Ruth Royer White Dorothy Woolf Alice Wright	1933	46 Donors	\$219.50
1929	30 Donors	\$262	Hazel Huber Adams Helen Phelps Bailey Mildred Barish Frances Barry Olga Bendix Mary Blackall Catherine Crook Blau Ernestine Bowman Alice Fairchild Bradley Ruth Conklin Dorothy Crook Ellen Dannenbaum Dribben Charlotte Fair Elsa Nilsson Foster Jean Giesey Comfort Tiffany Gilder Adele Burcher Greeff Katrine Groves Grace Hower Grace Iijima Evelyn Heatley Irvine Imogene Jones Muriel Kelly	Eileen Kelly Dorothy Knowles Therese Werner Kohnstamm Evelyn Wilson Laughlin Margaret Leatherwood Isabel Lewis Martha Loewenstein Iva Ellis MacLennan Margaret Martin Margery McLaury Mary McPike Lillian Bachmann Osterhus Eleanor Overbeck Katherine Reeve Beatrice Lightbowne Ripp Elizabeth Stewart Schade Josephine Skinner Irma Smith Ragnhild Sonnenberg Louise Ulsteen Syversen Gena Tenney Viola Wichern Rachel Hixson Wilhelm
Anonymous Wilhelmina Bennett Achilles Patty Dent Allen Louise Laidlaw Backus Mary Baker Anny Birnbaum Brieger Alix Causse Dorothy Schaefer Genghof Amy Jacob Goell Martha Weintraub Goldstein Elsa Hartmann Ruth Hoyt Helen Savery Hungerford Carolyn Joy Nan Kelsey Virginia Brown Kreuzer	Frances Holtzberg Landesberg Ruth LeRocker Ruth Magurn Julie Newman Merwin Edith Birnbøum Oblatt Mary Bamberger Oppenheimer Rose Patton Eleanor Rosenberg Norma Stiner Alberta Strimaitis Margaret Weymuller Marian Churchill White Hannah Whuffle Virginia Cook Young	1934	16 Donors	\$102
1930	26 Donors	\$136.10	Susan Lockwood Adams Constance Brown Annabelle Chazanoff Garfinkel Sara Gehman Rachel Gierhart Irma Burroughs Gold Mildred Wells Hughes Margaret Gristede MacBain	Marie Altschul Mansbach Jane Martin Eunice Moody Marguerite Osmun Schmidt Hildegard Fitzgerald Shinners Catherine Strateman Ruth Thompson Nancy Van Riper
Margaret Ralph Bowering Katherine Brehme Beatrice Goble Brick Helen Chamberlain Elizabeth Gaw Comeau Jean Crawford Jean Hasbrouck Dean Mary Dublin Francine Alessi Dunlavy Helen Fuller Marian Irish Jeannette Abelow Jarnow Mary Bowne Joy	Gertrude Carmody Kline Anne Lavender Helen Leuchtenberg Georgia Mullan Mansbridge Elsa Meder Hazel Reisman Norden Filippa Vultaggio Scafuro Madge Tompkins Seaver Mildred Sheppard Bettina Thrall Grace Reining Updegrove Jeanette White Felicia Badanes Wigod	1935	20 Donors	\$113
1931	6 Donors	\$39	Edith Cantor Dorothy Cromien Mildred Kreeger Davidson Armine Dikijian Edna Edelman Diana Campbell Exner Margaret Fischer Elizabeth Hayes Kathryn Heavey Rebecca Hopkins	Marie Leis Gertrude Lober Minna Muller Elizabeth Myer Jane Goldenburgh Oettinger Roselle Riggan Mary Selee Elizabeth Simpson Helen Stofer Jean Preston Tilt
Frances Markey Dwyer Freda Foerster Catherine Lawlor	Catherine Kennedy Scott Else Zorn Taylor Agnes Brodie von Wettberg	1936	17 Donors	\$93
1932	12 Donors	\$67.50	Louise Ballhausen Dorothy Brauneck Alice Corneille Cardozo Marie Courtney Elizabeth Dew Jane Eisler Estelle Fischman Carol Franz Phyllis Hadley	Katharine Hand Tillie Harris Charlotte Haverly Florence Leopold Alice Morris Mildred Nicoll Barbara Pointer Marjorie Runne
Helen Appell Elinor Cobb Barbara Gifford Janet McPherson Halsey Adaline Heffelfinger Helen Hennefrund Alice Burnham Nash	Lorraine Smith Resnik Doris Smith Frances Smith Mabel Smith Margaret Schaffner Tenbrinck	1937	35 Donors	\$91
		Charlotte Bansmer Mary Brown		Ethel Byrne Anne Blanchard Connery

OUR OWN AGONY COLUMN

Notices which alumnae wish to appear in this column must be mailed before the fifteenth of each month to the Editor of the Agony Column, Alumnae Monthly, Barnard College, New York.

WANTED—OUTGROWN KIDDY CAR, VELOCIPED or toy automobile from a Westchester alumna for a needy Westchester Day Nursery. Will call for any toys in *good condition*.—*Julia Treacy Wintjen.*

DOES ANY ALUMNA HAVE TOP FOR 1931 FORD roadster she wishes to sell or exchange, or information as to where I can get one reasonably?—*One Who Believes the Auto is Here to Stay.*

WILL EXCHANGE TWO EXCELLENT SOLAR TOpees or "tropical sun helmets", adjustable sizes, for old fashioned brown and white bean pot (around 3 qts.) fancy aluminum moulds, or what have you? No reasonable offer refused.—*Settle Down.*

DESPAIRING MOTHER, AFTER SUMMER AT BEACH, solicits advice from alumnae mothers of aquatic children. Do you advise teaching them to swim with or without water wings or similar floating devices? Is there anything in the "throw them off the dock" school of thought?—*Persevering.*

HANNAH WHUFFLE, SORRY TO BRING UP SUBJECT again but we need your address. Acknowledgment of your gift to Alumnae Fund was returned by postoffice marked "Addressee unknown here."—*Grace Reining Updegrave.*

ARE THERE OTHER ALUMNAE WHO FEEL AS WE do about that fruit salad at Trustees' Supper last June? What can we suggest to Reunion Committee in its place or should we urge return to chicken salad? ("What was good enough for our mothers is good enough for us")—*Two Non-Vegetarians.*

UNDERGRADUATES NEED, AND PHYSICAL EDUCATION Department will be grateful for, any golf clubs alumnae are thinking of discarding. Leave drivers, putters, mashies, spoons in Alumnae Office or Miss Wayman's office.—*Follow Through.*

REMEMBER THAT THIS COLUMN REALLY WANTS to serve alumnae and is glad to print, free of charge, any legitimate and interesting item, also to forward to proper people all answers received. Our only stipulation is that if you insert an ad here and receive replies to it, you be courteous enough to reply to them *all*, as evidence that this column really is functioning.—*Agony Editor.*

(1937—Continued)

Harriet Core	Adrienne Macksoud
Jane Craighead	Isabel Malone
Margaret Curley	Eleanor Martin
Helen Daniells	Dorothy Mautner
Ruth Gould	Nancy McLaren
Adele Hagland	Dorothy Miesse
Ruth Harris	Marion Patterson
Irene Heus	Isabel Pick
Harriet Jones	Mary Puckett
Ruth Kleiner	Margaret Kissane Ray
Marguerite Kuhlman	Martha Reed
Irene Lacey	Amy Schaeffer
Virginia LeCount	Jean Sherwood
Helen Levi	Helen Winselman
Jean Luke	Ruth Wurts
Mary MacDonald	

Barnard Publishes

THE BEST BUTTER *by Elinor Rice*, Barnard, 1923. New York: Morrow, \$2.50.

"IT may have been the best butter," murmured the Mad Hatter as he closed the book, "but it was a little rancid in spots."

Of course that remark brands the Hatter an old foggy. No one in this generation is supposed to mind an occasional, or even a succession of, candid camera shots of what goes on in beds. There is a nervous preoccupation with physical love throughout the whole book—sometimes it is gay, sometimes it is angry and cheap, sometimes it is horribly impotent. And it all is necessary, in this kind of a sketch, for the author is drawing pictures of people she doesn't like very well.

Just up the river from New York, she says, there lies an advanced little community where essayists, psychologists, painters, economists and other intellectuals are busy expressing themselves. They are all witty and intense, and as the story of the summer unfolds, it becomes apparent that they are futile as well. In the face of a real problem—a W.P.A. strike when the new schoolhouse was half built—they manage, with the best motives in the world, to do a great deal of harm. They are full of words, words about the nobility of labor, collective bargaining, the coming revolution, and so on. But cold, hard facts stymie them. The chapters on the strike are full of tremendously strong, honest writing. They have a great many pat phrases about their children, too, and are **most** progressive, my dear, in planning their education and lives. But the children are sad little specimens, picking up the same words their parents use so casually, and building on a foundation of shifting sand.

If this all makes the story sound lugubrious, it is only because its underlying theme is bitter. Its actual words are hectically bright and funny.

Elinor Rice saw a great deal, recognized what she saw, and wrote it down in a fury. Aside from a couple of rancid spots, she has done a glitteringly successful job. Her characterizations are light and devastating and very funny. She has actually made her witty people talk wittily: no small achievement. There are too many characters to keep track of, but they are all so deftly done that you don't mind.

The rapier is more effective than the cudgel, and mockery is a better weapon than tirades. Flick by flick, this first novel takes off the skins of those esoteric liberals. You will snicker as you read, and sigh when you are through. You will remember some of the people and some of the *bon mots* for a long time, too.

The Barnard Clubs

Los Angeles

The Barnard Club of Los Angeles continued to meet during the summer. Margaret Kutner Ritter '12 entertained at a patio tea on June 25th in honor of Ethel Reges Brown '16 and her daughter. On July 16th, Erica Weary '19 arranged a beach party for the club at the Huntington Hotel, Long Beach, and on August 6th, Helen Miller Steffy '19 entertained at her home in Santa Monica.

Ten members attended the first regular meeting of the season on September 10th at the home of Louise Fox Connell '14. Plans for National Barnard Day on the west coast were discussed by Adaline Wheelock Spalding '97, chairman.

The club noted with regret the death last June of Mrs. Harriet Jellenik, mother of Irma Jellenik Green '07. Grandma Jellenik had become a beloved member of the group and her lively comments will be very much missed.

Members present at one or all of these meetings were: Helen Beery Borders '31, Jessie Brown '02, Elizabeth Polyzoides Dawson '33, Carol Grimshaw Dupy '18, Rosalind Jones '23, Cornelia Geer Le Boutillier '17, Alice Barrington Lewis '20, Marie Luckenbacher '21, Elinore Taylor Oaks '19 and Stella Bloch Schulz '16. Several daughters also were present.

New York

The Barnard Club of New York will join the New York branch of the American Association of University Women, the Women's University Club, the English Speaking Union, the Phi Beta Kappa Association and the New York College Clubs of Bryn Mawr, Mount Holyoke, Radcliffe, Smith and Wellesley in sponsoring a luncheon in honor of Miss Grace Hadow, principal of the Society of Oxford Home Students of Oxford University. The

SCHOOL DIRECTORY

St. Agatha

EPISCOPAL DAY SCHOOL FOR GIRLS
SOUND AND THOROUGH TRAINING
PRE-SCHOOL . . . TO . . . COLLEGE
BUS SERVICE CIRCULAR
553 WEST END AVE. (87TH ST.) NEW YORK, N. Y.

.. LOW HEYWOOD ..

On the Sound — At Shippan Point

Preparatory to the Leading Colleges for Women. Also General Course. Art and Music. Separate Junior School. Outdoor Sports.

Address Mary Rogers Roper, Headmistress
Box B Stamford, Connecticut

Saint Margaret's School

College Preparatory and General Courses

Established 1865

Incorporated 1875

ALBERTA C. EDELL, A.M., Principal
Waterbury, Conn.

MRS. ANDERSEN'S HOME-SCHOOL

In the country for children 1 to 8 years. Individual supervision by child experts. Family life. Year round. 20 miles New York City. Fanwood, N. J. Fanwood 2-7818.

Mrs. Helen Gildersleeve Andersen
Director

KEMPER HALL

EPISCOPAL BOARDING AND DAY SCHOOL

Preparatory to all colleges. Unusual opportunities in Art and Music. Complete sports program. Junior School. Accredited.

Address: Registrar

Box KA

Kenosha, Wisconsin

APPLETREE SCHOOL

Nursery-Kindergarten

East Rocks Road, Norwalk, Connecticut

Children from two to six years

Each child given individual attention. Activities planned to fit his needs. Summer Recreational Group.

Jean Aaron Smith

Elisabeth Putney

Telephone: Norwalk 6425-J

luncheon will be held at the Biltmore Hotel on Thursday, October 13th, at one o'clock.

October 19th is the date for the club's annual fall reception. Plans are in the wind for a luncheon at the World's Fair Terrace Club, on October 22nd.

This year's scholarship drive has been launched with Irene Dalglish McCanliss '13 as chairman. Subscriptions are again being sold at 25 cents each. The prizes are even more irresistible than last year's. The winner of the first prize has the choice of a Raymond-Whitcomb cruise for two to Bermuda (9 days) or to Havana (6 days), or a Raymond-Whitcomb Certificate for \$250 or \$200 in cash. The second prize is \$50 in cash, and the third a travel case given by Elizabeth Arden.

Westchester

Barnard-in-Westchester will open the season on Saturday, October 15th, with a tea at the home of Clare Loftus Verilli in White Plains. Westchester members of Barnard's Class of '38 will be guests of honor, as well as Alice Harte and Evelyn Gonzales '42, winners of the club's scholarships.

Final plans for the bridge-tea at the Hotel Gramatan to celebrate National Barnard Day will be discussed.

Class Notes

1901 ALMA WALLACH LIEBMANN died on July 15th of a heart attack after a few days' illness. She was always a helpful and loyal member of the Alumnae Association. For several years she was on the Students' Loan Committee. Alma Liebmann had an unusually fine, generous and unselfish nature and all who came into contact with her felt the charm of her rare personality.

1915 (Class Editor—SOPHIE BULOW, 2444 Lorillard Place, New York, N. Y.)

ELIZABETH TRUNDLE THORINGTON is head of the lower school of Milwaukee Downer Seminary, Milwaukee, Wisconsin.

IRMA MEYER has an advertising office at 29 West 34th Street, New York City.

1918 LILLIAN WEYGANDT, director of the James Center of the Children's Aid Society for seventeen years, died suddenly on July 25th in her apartment in the Center building at 154 Hester Street. Miss Weygandt was engaged in social and cultural work in the Italian quarter of the lower east side, where James Center is located, for many years. A year after her graduation from Barnard she became a teacher at the Italian School conducted by the Children's Aid Society, at the site of the present center. Her mother, Mrs. Louisa de Ferrari Weygandt, for forty years had been principal of the school. In 1931, when the Children's Aid Society withdrew from its school program, the old Italian

school became a children's center, and Miss Weygandt was made director. In this capacity she administered the membership of more than 1,000 boys and girls enrolled in the center's clubs, and directed health programs, summer camp projects, and nurseries for pre-school children.

1921 MARIE MAYER TACHAU writes that although she couldn't get to reunion she has had two reunions in the hinterland. One was with EDITH LINDEMAN in Richmond, and the other with ELEANOR CASTLE NEALE in St. Louis at the National League of Women Voters' Convention. The last reunion was repeated in Cincinnati at RUTH JONES' house. Mrs. Tachau has just finished a term as president of the Louisville League of Women Voters.

ALICE JOHNSON WATSON has received a United States civil service appointment as junior conservationist.

LILLIAN BROWER is in the elementary division of the Brooklyn Botanical Garden.

JEWEL WURTZBAUGH was presented with a scroll of honor by graduate students and alumni of the University of Oklahoma for "distinguished and generous service to students" at the annual Alumni Banquet, on the anniversary of her tenth year with the university.

1922 KATHERINE BASSLER KEPPLER has been appointed head of the mathematics department of the Foxcroft School.

EDITH MENDEL STERN had an article called "Spot News" in the June number of *Colliers*, and another in the July *Scientific American*, "Out Where the Vets Begin," reprinted in the *Reader's Digest* as "Guardians of Farm and Home."

LOIS TUTTLE has a secretarial position with the Seaboard Western Grain Corporation.

1923 Married—HELEN PATTENDEN ROWELL to John W. McKean of New York.

CLARE LOFTUS VERILLI has been elected vice-president of the College Club of White Plains.

MARY LEE SLAUGHTER EMERSON was awarded the A.A.U.W. scholarship to attend the Vassar Institute of Euthenics this summer, with her two-year-old daughter, Sarah.

ESTHER BINGHAM CONEY died in September at her home in Watseka, Illinois. She is survived by her husband, William Coney, and by two children, Katherine and Bingham.

1924 Born—to Mr. and Mrs. Malcolm Reiss (LUCIA ALZAMORA) a son, Malcolm Alzamora Reiss, in July.

BARBARA KRUGER has been appointed dean of women at Susquehanna University at Selinsgrove, Pennsylvania.

1925 Born—to Mr. and Mrs. Clifford R. Hale (ELVA FRENCH) a daughter, Nancy French, on September 19th.

DOROTHY VICKERY is assistant to the publicity secretary at Hollins College.

IRENE THOMAS O'NEILL is assistant secretary to the Board of Higher Education in New York City.

1926 FRANCES FEAGIN is teaching at the Gould Academy

in Portland, Maine. She is to teach speech, dramatics, remedial reading, and Glee Club.

Married—MARION JANET CLAYTON to Alvin E. Margary, pastor of the Lafayette Avenue Presbyterian Church in Brooklyn.

INGEBORG CARLMARK WILLIAMS is part-time secretary to Mrs. Emerson Foote, owner of *Zonta*, a magazine for professional women.

Married—LEONA FRIEDMAN to Jesse K. Robertson, in June. Mrs. Robinson is with the Brooklyn section of the National Council of Jewish Women.

1927 ANNA BARRETT is in the unemployment compensation office of the Connecticut State Treasury Department.

EDNA METZGER ROTHENBERGER has a daughter, born in May.

ROSEMARY KEATING MORRISSEY is moving to New Orleans, Louisiana, where her husband has an appointment in the music department of Tulane University.

DORIS GOSS is secretary to Mrs. Arthur Hays Sulzberger.

Born—to Mr. and Mrs. Mortimer Brooks Howell (MARION EMELIN) a son, David Brooks Howell, in July.

1928 MARTHA BOYNTON WHEELER is resigning her position as buyer at Macy's, but she is to continue on the consulting staff.

ELVIRA SCHULMAN is secretary in the office of her father, a doctor.

FLORENCE BEAUJEAN is to teach in the kindergarten of the Kensington School, in Great Neck, Long Island.

Mrs. Alfred Larke (MARGARET AYARS, ex-'28) has a daughter, Nora, born in March of this year.

EVELYN NEUBERGER GROSSMAN is story editor for Selznick International Pictures, Incorporated.

JOSEPHINE PIERCE is assistant matron at the Westfield State Farm in Bedford Hills, New York.

DOROTHY MARX BYRNS is teaching English at the John Adams High School.

Born—to Mr. and Mrs. Henry G. Paul (EDITH GAIN) a second daughter, Barbara Cameron, on May 6, 1938.

ANNE ANASTASI has written a book on Differential Psychology, published by Macmillan.

Married—JEAN SMITH to Frederick R. Holman, in April.

MARGARET COWLEY (ex-'28) is practicing law in New York City.

DOROTHY STICKLE is a librarian in the Glen Ridge Library.

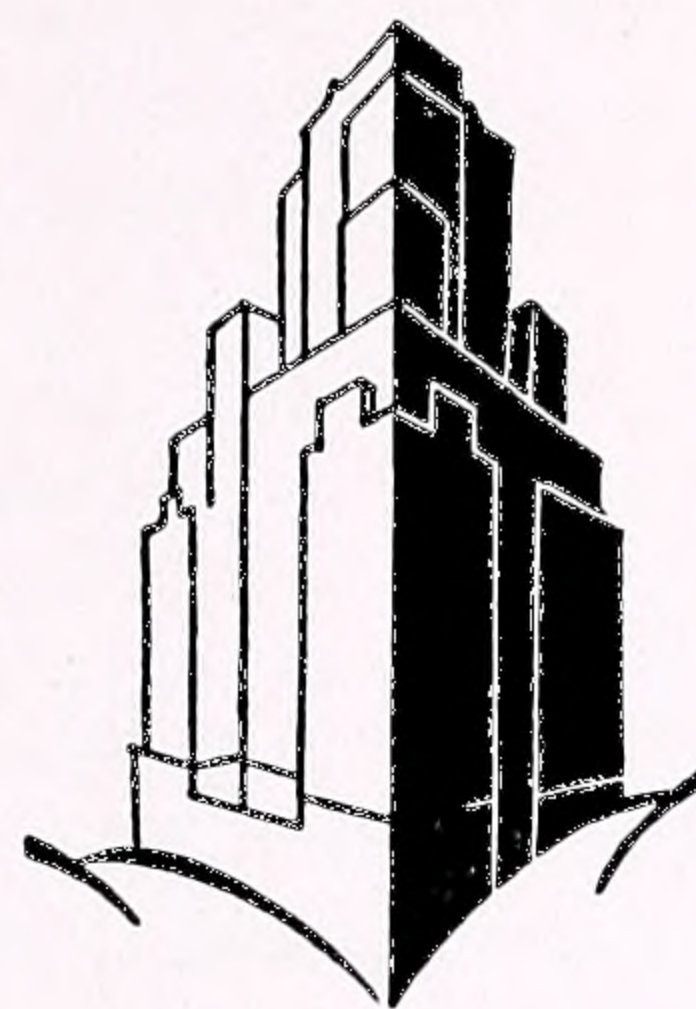
RUTH ROYER WHITE is doing secretarial work in the Clarence White School of Photography.

1929 Born—to Mr. and Mrs. Martin Landesberg (FRANCES HOLTZBERG) a son, Sander Burt, in September. He is to be called Sandy.

The Penn Publishing Company is to publish next month a book by EDNA TAFT entitled "A Puritan in Voodoo Land." She also had an article in the July-August issue of the *American Rose Magazine*, "A Slighted Senorita from Spain."

DOROTHY BRINDZE is secretary in the New York office of the United States Department of the Interior.

EDITH HARRIS married David Feyer in November, 1937.



NEW YORK'S
MOST
EXCLUSIVE
HOTEL
RESIDENCE
FOR
YOUNG WOMEN

CALLING ALL COLLEGE GIRLS

The Barbizon is "college headquarters." College Clubs, Swimming Pool, Gymnasium, Squash Court, Sun Deck, Terraces, Lounges, Library, Daily Recitals, Radio in every room.

Tariff: From \$12 per week - \$2.50 per day

Write for New Booklet "B"

NEW YORK'S MOST EXCLUSIVE RESIDENCE FOR YOUNG WOMEN



the . . . Dorothy Nye Studio of Individual Exercise



Special Series of Exercises for

- POSTURE CORRECTION
- REDUCING
- RELAXATION
- SLEEPLESSNESS
- POST PREGNANCY CASES
- CONSTIPATION
- FOOT TREATMENTS

Miss Nye—former head of Corrective Department at Barnard College.

33 E. 51st St., N. Y. C.
ELdorado 5-6291

FUR COATS

DIRECT FROM FASHION SHOWS (SAMPLES)

MAGNIFICENT GENUINE FUR COATS SEAL

\$45

CARACUL BEAVER AM. BROADTAIL MANY OTHERS

LESS THAN WHOLESALE PRICES
Written Guarantee With Each Coat
We Invite You to Inspect These Handsome Coats

LEONA STUDIO

(This is not a Store)

335 West 57th Street

COLUMBUS 5-6144

ELIZABETH LITTLEFIELD WILLIAMS is a case worker with the Social Service League in Greenwich, Connecticut.

KATHRYN LOUISE HUBER married Dr. Robert Joseph Fletcher, Jr., in June.

The class has suffered a deep loss in the death in June of MARY BAMBERGER OPPENHEIMER, for ten years a member of executive committee and Fund Representative. She is survived by her parents, her husband, and a daughter.

1930 MARION IRISH has been awarded the Block Fellowship in Government at Yale for 1938-39, and will take a leave of absence from her professorship at the Florida State College for Women.

Born—to Mr. and Mrs. Philip J. Bossi (MARY SCOLA) a daughter, Mary Lou, in January.

Born—to Mr. and Mrs. Elmer F. Becker (ALBERTRIE GAHEN) a daughter, Kay Livingston, July 21, 1938.

HELEN WHEELER has been appointed assistant professor of English speech at Mount Holyoke. Last semester she was on leave, studying at Columbia toward a Ph. D.

1931 ISA R. McILWRAITH is an instructor in the music department of Vassar College.

FLORENCE GROF SUGARMAN, under the platform name of Florence Gay, has been professionally engaged as lecturer and book reviewer since February, 1936. This season she is associated with the Roxanna Wells Lecture Bureau.

Born—to Mr. and Mrs. C. A. George (KATHERINE COLLINS ex-'31) a son, Samuel Clement Guion. Mr. and Mrs. George have two other sons and a daughter.

Born—to Mr. and Mrs. Daniel B. Frey (RUTH JACOBUS) a son, Andrew Louis, August 11, 1938.

EDITH MOSBACHER teaches French at the high school in Babylon, Long Island.

Married—VIVA SCHATIA to Dr. Mark G. Kanzer, June 3, 1938.

CAROLINE RATAJACK ROGOZINSKA has studied one summer at the University of Krakow in Warsaw, on a scholarship from the Koscuizko Foundation, one summer at the Forum Seminarjum, Poland, on a scholarship from the World Alliance of Poles, and last June received her Master's degree in Polish literature from Columbia University.

PATRICIA WILSON VAURIE, assistant editor of the Columbia Alumni News, had an article, "Festival in the Azores," in the May 27 issue of *The Commonwealth* magazine.

BEATRICE KASSELL has received her Ph.D. in biochemistry at Columbia.

SALLY VREDENBURGH was awarded the Drama League of New York's "greatest number of attendance" prize by Frank Craven of "Our Town."

MARY ELEANOR BROWN is an authorized teacher of the Mensendieck System of Functional Exercises in New York, a system adopted as a means to reestablish and maintain natural muscle function and tone.

1932 MARY MAHONY teaches French at the Dalton School.

MARJORIE MUELLER is a staff writer with Radio Events, Incorporated.

Married—VIRGINIA CONFORTE to Dr. Ellsworth Eidenmuller, June 18, 1938.

Married—CARRYL E. SIMONSON to L. P. Wassermann, April 18, 1938.

Married—EDNA BLACK to Dr. A. L. Kornblith, June 29, 1938. They are living at 77-03 Ditmars Boulevard, Jackson Heights North, Long Island.

DORIS SMITH is instructor in sociology at Skidmore College.

1933 GLADYS BECICA is a secretary and Spanish translator with the Chemical National Bank and Trust Company.

ELIZABETH B. HINCKLEY, M.D., has opened an office for the practice of medicine at 90 Morningside Drive.

Married—PRISCILLA WADHAMS to Carl Baker Avery, June 21, 1938.

JOSEPHINE SKINNER is a statistical clerk with the National Industrial Conference Board.

MYRA GRIGG is secretary to the pastor of the Calvary Baptist Church.

MARGARET DALGLISH is a secretary in the Comptroller's office at Teachers College.

JANET KNICKERBOCKER WEBSTER is a case worker in the Foster Home Department of Edwin Gould Foundation.

Married—RUTH HEITZMANN to George Joseph Murray, Jr., Lieutenant, United States Army, May 21, 1938.

MARGUERITE FELTNER DREIER is living in Houston Texas, where she is evaluation geologist with an oil company.

1934 Born—to Mr. and Mrs. Lester Kissel (ALICE MACRAE) a son, June 8, 1938.

DOROTHY KNOWLES is assistant to the registrar at the Museum of Modern Art, New York City.

RUTH THOMPSON is a secretary and Spanish translator with Cinchona Products Institute, Incorporated.

MARY PHELPS is secretary of the Writers' Laboratory of the Cooperative School for Student Teachers.

ESTHER HILJANDER is an assistant reference librarian at Teachers College Library.

LYDIE VENN, who has been with the New York State Health Department in Albany, is now with the Public Health Service in Washington.

Born—to Mr. and Mrs. Charles B. McConnell (ANNE HUTCHINSON), a daughter, Sally Anne, August 10, 1938. Sally Anne is partially named for Sally Gehman, also of '34, who visited the McConnells during July in Nashville, North Carolina, where Mr. McConnell is pastor of the Baptist Church.

THELMA STONE (ex-'34) is head nurse in charge of the new babies at Syracuse Hospital, New York. After leaving Barnard, she took her training at New York Hospital, Cornell Medical Center, and was a graduate nurse there for a year.

1935 NANCY CRAIG is an assistant and student in the physical education department at Russell Sage.

NORA HAMMESFAHR is secretary to the vice-president of Cecil, Warwick and Legler, advertising firm.

ELIZABETH SIMPSON is with the Public Health Service as a statistical clerk and is now working on a study of illness in Baltimore.

DOROTHY ROBINSON is an assistant in the Barnard zoology department.

DOROTHY NOLAN teaches in the elementary schools of Puerto Rico.

MARIO GREENEBAUM received her Ph.D from Bryn Mawr last June, and this year will be a reader and assistant in the mathematics department there.

Married—BARBARA PERRIN to Thomas Washington Chappell of Richmond, Virginia, July 24, 1938.

DORA JANE RUDOLF is a secretary with Accessocrafts Products.

1936 MARJORIE EBERHARDT received her M.A. in physical education from Wellesley College last June, and is now director of physical education for girls in the Amherst, Massachusetts, high school.

HELEN BILLYOU is a secretary and research worker with the Book of the Month Club.

CHARLOTTE CLOUDMAN FASSETT (ex-'36) is secretary to Dr. William V. Healey.

JEAN PRIAL received her M.A. last June at the Fordham School of Social Work, and is now a junior case worker with the Catholic Charities.

KATHERINE HAND received her M.A. in mathematics from Teachers College last June.

Married—MARIE (Mimi) BEZLOJOVA, foreign scholar at Barnard 1935-36, to Josef Hamrik.

BEATRICE KLEIN writes copy in the promotion department of *The New York Post*.

SALLIE SEWELL is studying for an M.A. in English at the University of North Carolina.

DOROTHY SKENE was married to Dr. James D. Page on September 3rd at Vineyard Haven, Massachusetts. Dr. Page is on the staff of Rochester University.

CLAIRE WANDER and NINA BASCHUK are with Helena Rubenstein, Incorporated.

RUTH MARIE OLSEN teaches at the Post Children's School, Marine Barracks, Quantico, Virginia.

VIRGINIA MALONE SCHIECK is a laboratory assistant under Dr. Short of the Life Extension Institute.

EDITH ROSENBERG is temporary laboratory assistant in the New York City Board of Health.

Married—BETTY McCLURE (ex-'36) to Paul Terhune Wood.

ELIZABETH McNEIL is librarian and teacher of English at the Warrior High School, Birmingham, Alabama.

Married—ELOISE SOUTHERN to Robert Noehren, August 27th. They are living in Buffalo, New York.

Born—to Mr. and Mrs. John Dengler (HELEN DYKEMA), twins, Nancy Joan and David Barry, on May 1st.

Engaged—ANN FURMAN to Paul H. Feuer.

Married—BARBARA JEAN GRAHAM to Alexander Lueke Junge, July 30th, in White Plains. Mr. Junge was graduated *cum laude* from Harvard University in the class of 1936. He is associated with the Dictograph Products Company of New York. Mrs. Junge is teaching English and American history at Rosemary Hall in Greenwich.

1937 MARGERY RAY is with the Engineering Societies Library and is now working on a classified periodical index.

MARY JANE BROWN is secretary to Nelson Fink, a decorator.

EUGENIA LIMEDORFER is apprentice reader of history and

EXECUTIVE CAREERS for

One year's post-graduate course for college women in Institutional Management and Home Management. Courses of study taught by experts in executive management for executive positions in Clubs, Hotels, Hospitals, Dormitories, Apartment Buildings and other Institutions. Classes given also in the practical management of the home—for the experienced Home Makers as well as the Newly-Weds and the Brides-to-Be.

C
O
L
L
E
G
E

W
O
M
E
N

THE THOMPSON WYLIE TRAINING SCHOOL
The Wyoming, 55th St. & Seventh Ave., New York, N. Y.
Tel. Circle 5-8452. Elizabeth Thompson Wylie, Director.

BOYD AND MANNING

Agency

OFFICE PERSONNEL

MARION BOYD '09, JANE MANNING, Owners

489 Fifth Avenue, New York, N. Y. MU 2-1810

FOR COLLEGE WOMEN

An intensive three-months' course in the business fundamentals essential as an entree into any field. Added preparation in the field of your individual interest. If that interest should be publishing, complete instruction will be given in:

1. The preparation of press and publicity articles.
2. The writing and editing of news and special articles.

Enrollment limited—write or telephone for catalog.

THE NEW YORK SCHOOL of
342 Madison Ave. SECRETARIES
VA. 3-4039



THE difference between the "almost great" and the champion is the striking difference wise buyers of printing have discovered between the efforts of others and the superb printcraft always available at this house.

THE LITTLE PRINT

236 HUGUENOT STREET
New Rochelle 5111-5112

Printers to The Alumnae Monthly

English at the Horace Mann School in New York City.

FLORENCE CAREY has been studying at the National University of Ireland, University College, Dublin, taking courses in English and Anglo-Irish literature, and expects her M.A. in November. She has also travelled in France and Italy.

ISABEL MALONE is school librarian at the Berkeley Institute.

Married—FRANCES BRANSTEIN to Dr. Hans Rothmann.

Married—BETTY JANE BUELL to Vincent Strong Mulford, Jr., June 11, 1938.

MURIEL SCHUCHART is a secretary in the retail sales department of Helena Rubenstein, Incorporated.

JULIA GEMMILL is a case worker with the Social Service League of Montgomery County, Rockville, Maryland.

JULIA FISHER is writing for the educational department of the Democratic National Committee.

Married—RUTH TRIGGS to Harrington Vose Ingham of Los Angeles, California.

JESSIE CASAX is secretary with Armstrong and Galbraith, marine equipment firm.

TOINI LEFREN is office assistant in the School of Education, New York University.

Married—DOROTHY MITCHELL EDWARDS to Francis Edward Drake, Jr., September 2nd. Mr. Drake, who received a degree in electrical engineering from Columbia University, is now with the Rochester Gas and Electric Company. The couple will live at 210 South Oxford Street, Rochester, New York.

Engaged—BETTY PARSONS to Howard Lockwood, Jr. Mr. Lockwood graduated from Yale University in the class of 1937.

Engaged—IRENE LACEY to John F. Stahlin. Mr. Stahlin is with McCann Erickson, Incorporated, New York City.

1938 SHEILA BAKER is a research assistant with *Time*.

VIRGINIA SHAW is an office assistant with the Britannica Junior Society.

MARGARET JASSEY HEITZMANN is taking a secretarial course at the Katherine Gibbs School.

ORLEANS ARCHAMBAULT is selling at Best and Company.

ANNA LOUISE HALLER is a resident office assistant at St. Barnabas House, New York City.

JANE MARTINSON is a laboratory assistant with the Killian Research Laboratories.

HELEN RAEBECK was awarded a New York City municipal internship and last summer was assistant to the secretary

of the Board of Estimate. This winter she will study history at Columbia where she has the Frances M. Dibbee Scholarship.

ADI-KENT THOMAS models sports dresses at Brous and Jacobson.

KATHRYN SMUL has been awarded a Curtis University Scholarship at Columbia in public law and government.

ELMA OLIVER is assisting Professor Gayer of the Barnard economics department in his research work on business cycles.

HELEN JEFFERSON is a secretary in the investment research department of Clinton Gilbert, Incorporated, a brokerage house.

HELEN B. HIRSCH is a part-time assistant in the Barnard Spanish department.

HELEN BOYLE is taking a secretarial course at the Interboro Institute.

ELIZABETH WRIGHT is studying at the Western Reserve School of Applied Social Science, and will do her field work with the Cleveland Institute of Family Service.

VALMA NYLUND is selling at Macy's.

MARGARET TRESSELT was an instructor in psychology, logic and sociology at Union Junior College last summer.

CATHERINE KNEELAND is a research and publicity assistant with the Harmon Foundation and is working, at present, on educational movies.

JACQUELINE HICKS has been assisting in the New York Public Library.

KATHERINE HORSLEY is secretary to the president of the Bradford Oil Refining Company, Bradford, Pennsylvania.

RUTH GRAVEN studied this summer at Cold Spring Harbor on a scholarship from the Barnard zoology department.

SARAH IVES is a secretary with Mr. Hohe, export broker.

DOROTHY SCHUBERT is manager of the college shop at Frederick Loeser, Incorporated.

DOROTHY BENEDICK is a demonstrator in the geology department of Bryn Mawr College.

Engaged—SHIRLEY HAGEMAN to Howard Parker Willett.

LOUISE JOHNS is teaching English and history at the Culpeper High School, Culpeper, Virginia.

HARRIET BENEDICT UNDERWOOD is an assistant in chemistry and physiology at the New York Hospital School of Nursing.

ANN COTTRELL is reporting in the woman's department of the *Richmond Times-Dispatch*, Richmond, Virginia.

RUTH INSCHO BUCHANAN is assistant secretary in the Alumnae Office of Barnard College.

Tear off and send to MRS. J. M. THOMPSON, Barnard College, Columbia University, N. Y.

I should like to join the group in to celebrate
National Barnard Day, November 19, 1938.

Name

Year.....

Address

ALUMNAE FUND OF BARNARD COLLEGE

Committee = July, 1937 = June, 1938

Central Committee

Lucy Morgenthau Heineman, 1915, *Chairman*

Mary Hall Bates, 1902

Mae Belle Beith, 1921

Madeleine Hirsh Ottenberg, 1911

Meta Hailparn Morrison, 1925

Margaret Moses Fellows, 1917

Dorothy Woolf, 1928

Marion Travis, 1920

Dorothy Crook, 1933

Grace Reining Updegrove, 1930, *Executive Secretary of the Alumnae Fund*

Ex-Officio—Officers of the Associate Alumnae

Elizabeth Wright Hubbard, 1917

Isobel Strang Cooper, 1922

President

Treasurer

Evelyn Orne Young, 1922, *Executive Secretary*

Advisory

Virginia C. Gildersleeve, *Dean*

Alice Duer Miller

Helen Erskine

Emily Lambert

Trustee

Assistant to the Dean—Outside Contacts

Bursar

Ellinor Reiley Endicott

Helen Stevens

Representative on the Committee of Seven Colleges

Assistant to the Dean on the 50th Anniversary Fund

Florence deL. Lowther, *First Chairman, Alumnae Fund*

Mabel Parsons

Iphigene Ochs Sulzberger

Alumnae Trustee

Alumnae Trustee

Class Representatives

1893	Mary Stuart Pullman	1922	Gladys Lindsay
1894	Eliza Jones		Mildred Uhrbrock
1895	Mabel Parsons	1923	Helen Gray
1896	Ada Hart Arnold	1924	Lilyan Stokes Darlington
1897	Mary Dobbs Wadhams		Christine Einert
1898	Anna E. H. Meyer	1925	Dorothy Putney
1899	Grace Goodale		Ruth Gordon Riesner
1900	Theodora Baldwin	1926	Iona Eccles Comstock
1901	Hilda Josephthal Hellman		Bryna Mason Lieberman
1902	Janet Seibert McCastline	1927	Mildred Bisselle Fewlass
1903	Florence Cheesman Remer		Marion Emelin Howell
1904	Florence Beeckman	1928	Ruth Richards Eisenstein
1905	Edith Handy	1929	Mary Bamberger Oppenheimer
	Clarissa Harben Macavoy		Rose Patton
1906	Edith Somborn Isaacs	1930	Jean Crawford
	Josephine Paddock		Jean Mathewson Ortgies
1907	Helen Shoninger Tanenbaum	1931	Catherine Campbell
1908	Marion Crowell	1932	Adaline Heffelfinger
1909	Ethel Goodwin		Frances Smith
1910	Clarice Auerbach Rosenthal	1933	Ernestine Bowman
1911	Marian Oberndorfer Zucker		Beatrice Lightbowne Ripp
1912	Cora Thees Crawford		Janet Silverman
	Anna Hallock		Josephine Skinner
1913	Edith Halfpenny	1934	Marguerite Osmun Schmidt
1914	Florence Palmer Edgell		Jeannette Reynolds Schuman
1915	Eleanore Louria Blum		Jane Stein
1916	Dorothy Blondel	1935	Elizabeth Anderson
	Beatrice Rittenberg Gross		Elise Cobb
1917	Rhoda Benham		Marion Greenebaum
1918	Margaret Sayford Fellows		Elizabeth Hayes
	Charlotte Dickson Fisher	1936	Alice Corneille Cardozo
1919	Blanche Stroock Bacharach		Helen Nicholl
1920	Elizabeth Armstrong		Kathryn Speyer
	Marion Kaufmann Haldenstein		Eleanor Ortman Wiener
1921	Edythe Ahrens	1937	Jane Craighead
	Ada Beney Mirlin		Margot Kuhlman
	Marion Groehl Schneider		

*A new smoking pleasure
for millions*



Up-to-the-minute...
mild ripe tobaccos and
pure cigarette paper ...
the best ingredients a
cigarette can have ...

*that's why more and more smokers are turning to
Chesterfield's refreshing mildness and better taste*

They Satisfy .. millions