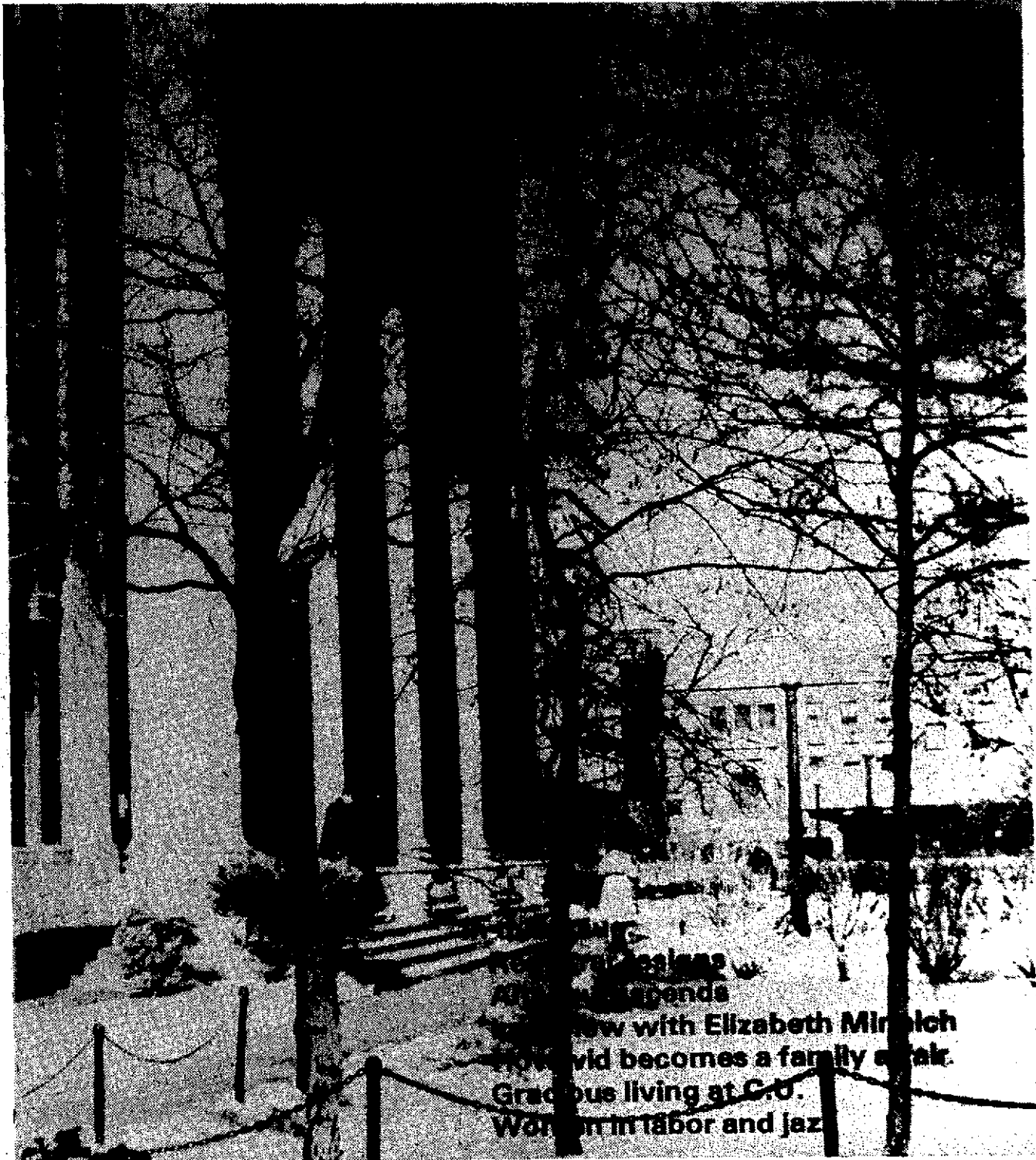


Barnard Bulletin

Vol.LXXXII No. 1

January 31, 1977



ALUMNI
New business
Alumni depends
New with Elizabeth Miralch
How did become a family affair.
Graduate living at C.O.
Women in labor and jazz

Photo by Ellen Doherty

Jami Bernard
*Editor-in-Chief*Elena Leon
*Features Editor*Abbie Fink
*Managing Editor*Leslie Miller
*Sports Editor*Lisa Anderson
*Assistant Editor*Ellen Doherty
*Photography Editor*Carol Fink
Gaby Belson
*News Editors*Joan Storey
Mary Kachourbis
Business Managers

The Face Is Familiar

Bulletin changes hands every January, but the face remains the same. We're still in our popular magazine format, so popular that at least two campus publications have imitated it. We're still for women's rights, women's education, a women's studies major, and an independent Barnard. So what makes the prospect of **Bulletin** '77 different from issues of previous years? Well, for one thing, our approach.

Our approach will sometimes be unorthodox. This may cheer the hearts of some and send waves of trepidation through the marrows of others. Our tone may at times be irreverent, at times conservative, but always with an eye for changing existing conditions in Barnard's interests.

We expect a lot of ourselves this year on **Bulletin**. And we expect a lot of our readership as well. What can you do? You can respond to us. You can join us. You can help make **Bulletin** a unifying force that will give us that identity Barnard is famous for but no one can seem to locate.

Take A Stand

Three years ago, Arthur Altschul was appointed to the Barnard Board of Trustees. At the time, **Bulletin** asked Altschul his feelings about his new position, and he commented with uncertainty that although he'd been out of touch with Barnard for a while, he assumed it must be coeducational by that time.

Altschul is more in touch with Barnard's situation now as he enters his term as Chairman of the Board of Trustees. But one wonders if his sympathies are really with us. True, he has firmly stated his support of President Mattfeld and whatever actions she may take regarding Barnard's well-being. But the lack of emotion in his carefully prepared statements and his avoidance of a personal involvement with Barnard is hazardous at a crucial time when Barnard needs the support of everyone.

What did the Board of Trustees look for in their new chairman? Are the rumors true that some felt that a male representative of Barnard would facilitate negotiations with Columbia, and give Barnard more credibility than a female would? Altschul claims his relationship with McGill is conducted "freely and in a spirit of openness." Is this a fighter for Barnard's cause or a pawn in a "between-us-men" agreement?

Altschul's family has supported Barnard in the past in many ways. But is a highly-placed individual who won't take a definite stand on the questions of merger or women's education just what Barnard needs right now?

—Jami Bernard and Lisa Anderson

Bornemann Appointed Registrar

by Carol Fink
and Gaby Belson

Vilma M. Bornemann will replace Mary Helen McMahon as College Registrar, announced President Mattfeld last Thursday.

McMahon, who has served as Registrar for the past seven years, is leaving Barnard to accept a position as Director of Central Student Records for the St. Louis Community College District, a branch of St. Louis University.

"I look forward to confronting the complexities that are inherent in a large public institution," she said.

The office of the Registrar at St. Louis Community College is equipped with a more sophisticated computer system than the one McMahon instituted at Barnard, and is especially designed to handle the larger student population. McMahon also anticipates the transition from a small, tight-knit female community to a larger, male-dominated organization.

"I enjoy working with men more than women. They're less competitive, more easy-going and make better colleagues," she reflected.



Bornemann: "I've always considered Barnard a home!"

Bornemann, who assumes office on February 24, 1977 (pending approval from the Board of Trustees of Barnard College), was recommended by Barbara Schmitter, Dean of Studies. Her experience as an administrator, teacher, alumna, and student make her an excellent successor, according to Dean Schmitter.

(Continued on page 12)