

ALUMNAE

MONTHLY

Barnard



College

MRS. ALTSCHUL DISCUSSES
FUND ACTIVITIES

Now that the vacation period is over or most of us, Development Fund committees throughout the country are outlining winter plans. Thirteen committees have already started active solicitation in their respective areas and fourteen committees are now in the process of organizing for solicitation.

This leaves only three areas—Houston, Seattle, and Southern California—without chairmen or committees; it is our hope that they will be organized very soon. About 7,000 alumnae live in all of these areas. Plans are now being completed for the solicitation of the approximately 1,600 alumnae who live in areas which will not be reached by the district organizations.

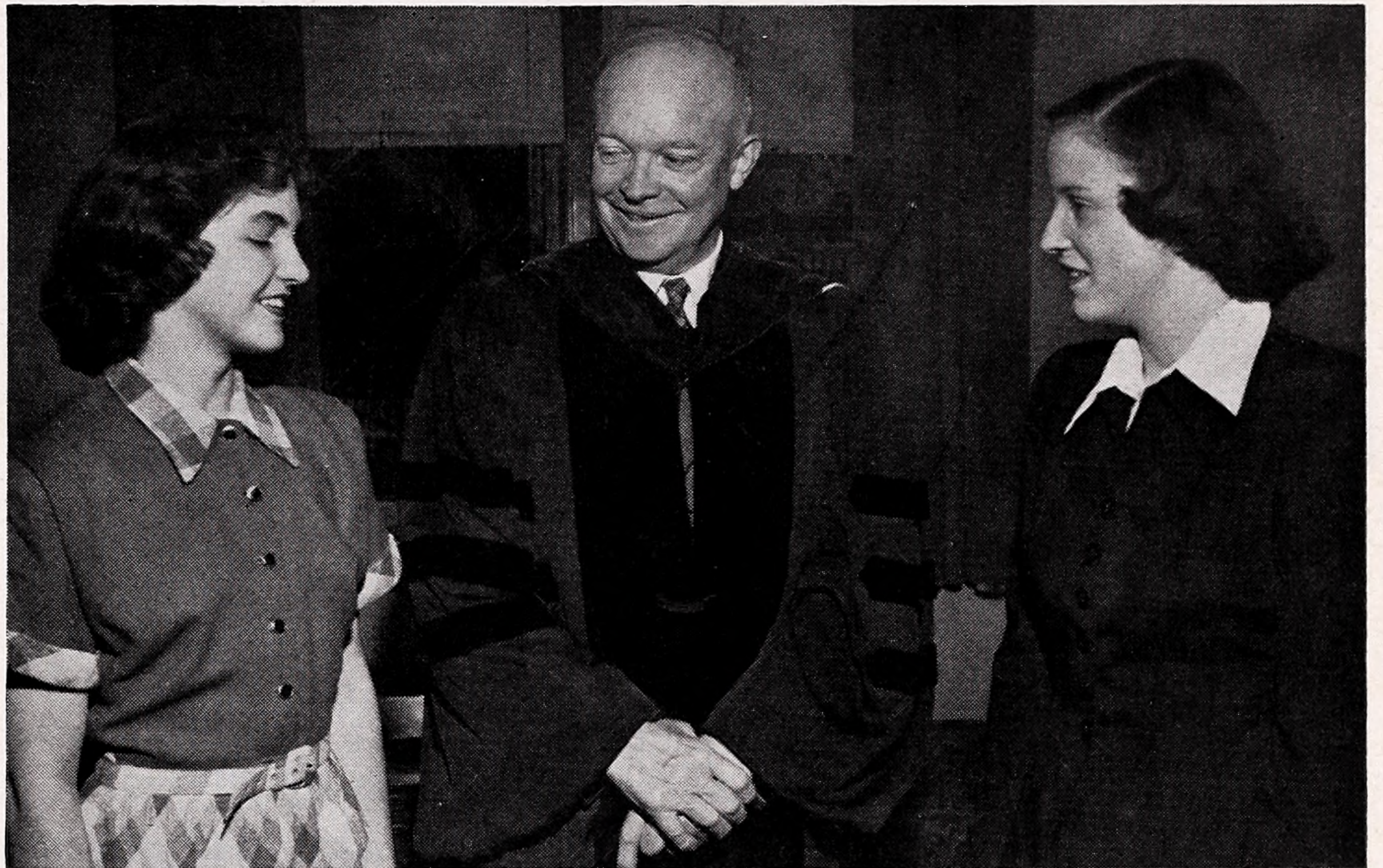
As of September 13, 1950, approximately nineteen per cent (1,662) of Barnard's alumnae have contributed to the Fund. The total alumnae gift, including subscriptions, is \$233,559—an average gift of \$140 from each contributing alumna. The over-all Fund total, including gifts from foundations and individuals other than alumnae, is \$1,399,096. Solicitation of these outside sources is continuing, paralleling the alumnae activities for the Fund.

Campaigns already begun in Westchester, New York City, Queens, Brooklyn, Staten Island, Suffolk County, Union County, Rockland County, Fairfield County, Pittsburgh, Delaware, Maryland and Washington, D. C., are continuing this fall.

Committees now organizing for solicitations are: Essex County, Morris County, Boston, Philadelphia, New Haven, Hartford, Hudson Valley, Buffalo, Dallas, Nassau County, Western Massachusetts, St. Louis, and Northern California.

Florence Mackie Goshorn '39, field director of the alumnae campaign, is making visits to area chairmen in thir-

(Continued on page 6)



Chatting with President Dwight D. Eisenhower before attending Barnard's opening Convocation on September 27 are two Barnard freshmen: Jo Clare Mangus, left, of Goodland, Kansas, and Ann M. Nelson, right, of Lawrence.

RIGHT TO SEARCH AND RESEARCH
DECLARED BASIC BY EISENHOWER

"It is a pleasure to open a school year at a time when school has assumed probably its greatest importance in its meaning to the world."

With these words, President Dwight D. Eisenhower of Columbia University greeted assembled Barnard students at the opening Convocation on Wednesday,

INSTITUTE IS OUTLINED

"Women in Public Life: An Appraisal of Their Achievements and an Analysis of Their Frustrations" is the theme of the Institute to be sponsored by the Barnard Alumnae Association and the Barnard College Department of Government on Friday evening, November 17, and all day Saturday, November 18.

Delegates have been invited from a number of organizations in the metropolitan area which are actively engaged in public affairs. Among the participat-

(Continued on page 6)

September 27 in the Barnard Hall gymnasium. President Eisenhower went on to point out the contrast between opportunities offered to students in the United States today and the plight of students in countries where "the school is only a propaganda machine."

"Free education lies at the very foundation of all the efforts we are making to preserve freedom in the world," President Eisenhower declared. "We do not often stop to consider our own priceless privilege of going to school in a free country. There is no limit on our own right to search and research. We not only have sources of information here; we can check them against any other sources in the world that we believe to be more authentic."

In closing the President remarked, "I congratulate every person who here again is taking the opportunity to familiarize himself with freedom and the

(Continued on page 3)

BARNARD COLLEGE ALUMNAE MONTHLY

Published by Barnard College once a month, except in August and September, through the cooperation of the Associate Alumnae and the Public Relations Office of Barnard College, 3009 Broadway, New York 27, New York.

Deadline for next issue: October 16.

Volume XL, No. 1 • October, 1950

Thursday, October 12

8-11 P.M. Barnard in New York Columbus Day Junior Party.—Barbizon Hotel.

Tuesday, October 17

1:10 P.M. All-College Assembly. Alumnae are cordially invited.—Gymnasium, Barnard Hall.

Wednesday, October 18

5-7 P.M. Barnard College Club of New York Group Tea.—Barbizon Hotel.

Friday, October 20

2:30-5:00 P.M. Barnard in Westchester Club Sub-Freshman Day.—Barnard College.

5:00-7:00 P.M. Barnard College Club of New York Group Tea.—Barbizon Hotel.

Meeting of the Washington D.C. Club with Dean Millicent C. McIntosh as guest speaker.

Tuesday, October 24

2:30 P.M. Meeting of the Board of Directors of the Alumnae Association.—College Parlor, Barnard Hall.

Friday, October 27

8:00 P.M. Barnard in New York Club Couples' Night.—Barbizon Hotel.

Tuesday, October 31

1:10 P.M. All-College Assembly. Alumnae are cordially invited.—Gymnasium, Barnard Hall.

6:30 P.M. Barnard in New York Club Supper Program.—Barbizon Hotel.

Saturday, November 4

1:30 P.M. Barnard in Westchester Dessert Bridge and Fashion Show.—Greenville Community Church Hall, Scarsdale.

ALUMNAE FUND REPORT

When the eighteenth annual Alumnae Fund closed its books on June 30, 1950, 1,401 alumnae had contributed a total of \$13,287.60. This total is less than in previous years because of the general subordination of the Alumnae Fund to the Development Fund; appeals were mailed solely from the Alumnae Office to enable class agents to solicit for the capital fund raising campaign; and two, instead of three, appeals were sent out.

Only unrestricted gifts sent to the Alumnae Office between July 1, 1949 and June 30, 1950, in response to the two appeals, are included in the given total. Restricted gifts, which were previously a part of the Alumnae Fund report, are now added to the Development Fund figures. The stories about the 1949-50 restricted contributions from the Thrift Shop Committee and the alumnae clubs appear on other pages of this issue.

The class of '25 contributed the largest total amount during the last fiscal year and during the last five year period. From July 1, 1949, to June 30, 1950, members of this class sent in \$1,284; from July 1, 1949 to June 30, 1950, they gave a total of \$5,128. The five year totals for the other 1950 reunion classes are: 1905, \$2,151; 1910, \$1,433; 1915, \$2,428; 1920, \$2,289; 1930, \$1,993; 1935, \$1,330; 1940, \$1,429; and 1945, \$1,893.

Under the chairmanship of *Helen Yard Dixon '25*, the Alumnae Fund Committee is now making plans for the coming year. In general, the program will be the same as last year's.

FRESHMEN ARE WELCOMED

Freshman orientation week began Saturday, September 23, with 201 first year students assembling on the campus to meet college and student government officers, and to participate in a social program. Classes began on Wednesday, September 27, when a special convocation was held to mark the opening of the College's sixty-second academic year.

The incoming freshmen were chosen from 630 applicants. Approximately 137 upper-classmen have transferred to Barnard from sixty other colleges, bringing the total of new students to 338. Twenty states and ten foreign countries are represented by this group.

The freshman class this year is smaller by about fifty-five than last year's class, marking the return of the incoming group to its normal pre-war size. Freshmen in 1935, for example, numbered 210, while the peak enrolment of 265 freshmen was reached in 1946. Last year there were 245 freshmen.

Commenting on the current trend, Miss Marian W. Smith, director of admissions, pointed out that during the years immediately following the war more families were able to send their daughters to the college of their choice

because the sons were being educated on the G.I. Bill, without cost to the family. Peak enrolments during those years, reaching a high of 1,267 in 1945-46, taxed all the facilities of the College, she said. Last year, enrolment was 1,072.

Statistics on the entering freshmen compiled by Miss Smith indicate that 72.7 per cent studied at public high schools, while 27.2 per cent attended private schools and five girls were prepared in foreign schools. Last year's figures reveal that sixty-four per cent of the class was graduated from public high schools, while private high schools and foreign schools prepared the other thirty-six per cent. Thirty-one New York City high schools and fourteen New York City private schools are rep-

(Continued on page 3)

To Barnard Alumnae:

The new college year will see many changes in the Barnard picture. Most important of these is the progress of the Development Fund. It seems impossible to realize that this time last year, Westchester was the only district organized. The report given in this magazine shows the real progress that has been made and the substantial results that have been realized.

We all owe a great debt to our Chairman, *Helen Goodhart Altschul '07*, whose indefatigable efforts and effective work underlie everything that has been accomplished.

As one alumnae group after another swings into action, I find tremendous encouragement and happiness in the interest shown by individual alumnae, and in the devotion to Barnard which is clear in their willingness to work hard on a difficult task. May I take this opportunity to send you all my best wishes for the success of your various enterprises, and my grateful thanks for all that you are doing for Barnard.

Millicent C. McIntosh,
Dean

presented in this year's class. Scholarships aggregating \$24,356 were awarded to forty-one members of the class.

Average age of the freshmen is seven years and seven months, about the same as last year. There is one former WAVE in the freshman class, and two veterans, a WAVE and a SPAR, are among those transferring to Barnard. Last year there were no veterans in the group of new students. The girls listed eighty different occupations for their fathers.

Two members of the freshman class are daughters of faculty members, while eleven freshmen and three transfer students are daughters or sisters of Barnard alumnae. Faculty daughters are Shoshanna Baron, daughter of Professor Salo Baron, of the Graduate Faculty of Political Science, and Charlotte Raup, daughter of Professor R. Bruce Raup, of Teachers College, and Mrs. Raup, who is Assistant Professor Clara Eliot, of the Department of Economics at Barnard.

Alumnae daughters in the freshman class include: Gladys Goddard, daughter of *May Bennett Goddard '24*; Ruth Hersch, daughter of *Faye Klawan Hersch '25*; Helen Jovis, daughter of *Bertha Sherline Jovis '18*. Shirley Carter, daughter of *Polly King Ruhtenberg '29*, and Marianne Edwards, daughter of *Mary Walker Edwards '14*, are among the transfer students.

Sisters of alumnae are as follows: Elizabeth Cowan, sister of *Ann Cowan '48*; Mary Cummiskey, sister of *Margaret Cummiskey '45*; Ruth Hersch, sister of *Greta Hersch '50*; Marcia Musicant, sister of *Ruth Musicant Feder '49*; Charlotte Raup, sister of *Joan E. Raup Rosenblatt '46* and *Ruth Raup '47*; Vivian Ross, sister of *Lucille Ross '42*, and Georgia Steigerwald, sister of *Jean Hughes '42*. Among the transfers, Sally O'Connell is the sister of *Camille O'Connell '49*.

Sixty-two of the entering students were class officers at their high schools; thirty-one were officers of student government; thirty-two were editors of school newspapers and magazines; and thirteen were graduated first in their classes.

The opening day's orientation program included a luncheon sponsored by the Undergraduate Association at which the speakers were Miss Jean T. Palmer, General Secretary of the College, Pro-



NEW BARNARD NOTE PAPER AND CHRISTMAS CARD!

The note paper, left, is decorated with a sketch of Barnard Hall. The Christmas card, right, with the sketch of the Helen Hartley Jenkins Geer Memorial Gate, is inscribed "Christmas Greetings and Best Wishes for the New Year." The note paper and/or cards, at eight for \$1, plus \$.10 for mailing, may be ordered from the Barnard Alumnae Office, University 4-3200, extension 714.

fessor *Helen Phelps Bailey '33*, class adviser, and Mrs. Nami Lengyel Ranken, undergraduate president. During the afternoon freshmen from Columbia College and the Barnard freshmen participated in a sports program followed by an outdoor picnic supper and a dance in John Jay Hall. All of the girls were guests in the Barnard residence halls for the night, and took part in a varied program on Sunday, September 24.

Freshmen were guests of Dean Millicent C. McIntosh at a luncheon in Barnard Hall on Tuesday, September 26. After the luncheon, freshmen and transfer students were introduced to officers of student organizations in the College gymnasium.

RIGHT TO SEARCH

(Continued from page 1)

truth, and who is planning to use these for the good of mankind."

Following this, Dean Millicent C. McIntosh greeted the student body, pointing out the improvements that have been made in the College buildings and grounds during the summer, including the "de-pigeonizing" of the front entrance to Barnard Hall.

"The world in which we find ourselves as we come back to College is a

far different one from the one in which we were living when we left in June," the Dean said. "This was made clear to me when I went to Europe with my family this summer. It was my experience that in Europe, where we were when the news of the Korean War broke, there was a feeling of absolute calm. There was actually a feeling of relief that something had finally happened, and a great admiration for the way that America had gone into the crisis."

After comparing the European calm with the "over-all indication that our country is scared" she found upon disembarking here, the Dean went on to say: "It seems to me that we can be glad that now at last the issue is clearly drawn and we know where we are going.

"You have a marvelous opportunity at this moment when you as an individual may really count for something. It is true that we need large armies, but the greater battle is in the hearts of people like us. If we allow ourselves to be afraid in the face of evil, we shall be fulfilling the hopes of our enemies by doing just what they want us to do. But if we choose wisely and make our lives work for the kind of civilization America stands for, we shall be winning the battle."

Sociology—A Vocation and a Study

(This Is the First of a Series of Articles Featuring the Career of an Alumna and a Description of a Corresponding Department at Barnard)

AS A VOCATION:

Next year, for the first time, the highest of sociological honors will go to a woman. *Dorothy Swaine Thomas* Thomas '22 will become president of the American Sociological Society. Miss Thomas, who is known professionally as Dorothy Swaine Thomas, is also the first vice president of the Population Association of America, a director of the Social Science Research Council, and a professor of sociology at the University of Pennsylvania. Miss Thomas spends a great deal of time in Washington, where she is a member of the technical advisory committee on population for the Census Bureau, consultant to the Division of Statistical Standards of the Bureau of the Budget (executive office of the President), and consultant on the statistical panel of the National Institute of Mental Health.

The foregoing events in Miss Thomas' career are impressive in both quality and quantity. At Barnard she concentrated first on English, but soon shifted to the Economics Department, which then included sociology. She found Barnard, she says, "an awfully stimulating place."

Liked Atmosphere

"Ogburn was chairman of the Department and he really got us interested in research and held us to high standards. And it was at Barnard that I was able to branch out into peripheral fields and to come under the influence of Wesley Mitchell, Robert Woodworth, and Franz Boas. I remember, also, how stimulating Robert Leigh's class in political science and Minor Latham's in drama were. I liked the intellectual atmosphere of the place."

After Barnard, she went to the University of London, where she received her Ph.D. in economics in 1924. During the same year she worked as a research assistant in the Federal Reserve Bank. In 1925 she was a fellow in the Social Science Research Council, and in 1926 she did research at the Laura Spellman Rockefeller Foundation. For the next three years she was research associate and assistant professor at Teachers College. From 1931 to 1935 she was re-

search assistant and associate professor at Yale University. In 1935 she was married to W. I. Thomas; for the next four years she was director of research in social statistics at Yale. For one year after that she was a staff member of the Carnegie Corporation Study of the Negro in America.

California Was Next

The next stop was the University of California, where she was a lecturer in sociology for one year and professor of rural sociology for seven. Since 1948 she has been at the University of Pennsylvania, where she is currently teaching two seminars in her special field of interest — population — in the graduate school, and is responsible for the Senior Conference Course for undergraduate sociology majors. She also gives occasional lecture courses in population and in research methods for undergraduates.

She has, on three separate occasions, been a visiting professor at the University of Stockholm, Sweden, and has served as collaborator for the Bureau of Agricultural Economics since 1941, and as director of the University of California Evacuation and Resettlement Study since 1942. She is also the author of numerous articles and books on sociological subjects, of which the latest is "The Spoilage," with P. S. Nishimoto as co-author, published in 1946. The subject of this is Japanese American evacuation and resettlement.



Dorothy Swaine Thomas Thomas '22

Now most of her time is given over to research, and she is completing a second volume on Japanese American problems called "The Salvage"; this will be published by the University of California Press and is, like the earlier volume, based on a study directed by Miss Thomas at the University of California.

AS A STUDY . . .

Since 1942 there has been an independent Sociology Department at Barnard. Before that time, economics and sociology were combined in one department, and students specializing in either field majored in both.

Professor *Mirra Komarovsky* '26, head of the Sociology Department, has been teaching at her alma mater since 1935, and the Monthly is indebted to her for the following information.

At present, approximately ninety Barnard students are taking Sociology 1-2, an introductory study open to all interested students. The enrolment in this class, which declined after the war, has recently returned to the previous level. Other courses include studies in the family, the community, urban social stratification, recent sociological theories, social problems and social movements, and social psychology. There is, in addition, a sociology seminar, open only to selected students, which offers opportunities for individual projects.

About thirty students are now majoring in sociology; these girls are required to take introductory economics and statistics and are strongly urged to take other courses in economics and the other social sciences, such as anthropology, geography, government, history, philosophy, and religion. It is still possible for those who wish to do so to combine sociology and economics or sociology and government as one major, distributing their time equally between their two chosen fields.

Students are still most enthusiastic about the fields of sociology that have attracted the majority of students in former years, according to Professor Komarovsky.

As always, social problems and possibilities for field work claim the largest share of attention, she says, adding that she has also noted a strong, but perhaps less general, interest in sociological theory.

(Continued on page 5)

The most important changes in Barnard's Sociology Department in recent years? We quote from Professor Komarovsky. "These lie, first of all, in the enrichment of our curriculum made possible by the coming to Barnard of Dr. Conrad Arensberg, and, more recently, of Dr. Gladys Meyer. We have long wanted to offer a course on the community. Dr. Arensberg's erudition and researches in rural and urban communities in various countries have made it possible for us to fill that long-felt need. The second semester of Dr. Arensberg's course on the community deals with ethnic and racial relations, an area of vital importance, and one in which students show a lively interest.

"Dr. Meyer's background, which combines academic with practical experiences in private and public social agencies in the south and in Washington, has equipped her for the course in fields of social work, hitherto given by a visiting part-time lecturer. She has also added a course on social stratification in urban communities.

"Some curricular reorganization has enabled me to develop, in addition to the course on the family, a course in sociological theory offering students an opportunity for critical examination of European and American sociological classics. This is followed, in the spring semester, by a course on 'Patterns of Social Reform.'"

Other Activities

Dr. Arensberg, who is the editor of a journal called "The Applied Anthropologist," has spent the summer on a tour of German social science institutes for UNESCO. Professor Komarovsky herself is currently engaged in research on problems of women; results are partially reported in the August issue of the "American Sociological Review." She serves as vice president of the Eastern Sociological Society, and frequently contributes to professional magazines, writing about her fields of special interest—the family and patterns of social reform movements. Both she and Dr. Arensberg also teach in the Graduate Faculty at Columbia.

The Sociology Department has also extended the opportunities for first-hand observation of social conditions through field work.

"We could do much more with the facilities of this great metropolis," Professor Komarovsky adds rather wist-



At the second annual party for the Buildings and Grounds staff, given on Tuesday, September 19, Fred Padmore, second from left, campus mail carrier, was awarded a service pin by Dean McIntosh for twenty-five years of service on the staff. Other recipients of the Twenty-five Year award were Gardiner Hall, left, and Miss Elizabeth Ganley, right, both of the residence halls staff.

Mr. Padmore, known to alumnae and students as "Fred," never forgets a face, a name, or a detail about "his girls." Fred estimates that his daily mail load has increased about six times since he came to Barnard in 1925.

Employees and their friends provided the entertainment at the party, with Desmond Hassell, head porter for Brooks Hall, acting as master of ceremonies.

fully, "but not until the resources of the Department for effective supervision are enlarged. We are looking forward to the time when we shall be able, also, to expand our seminar work, especially to nurture the exceptionally gifted students."

Could the Monthly print a statement summarizing the aims of the Sociology Department? Remarking that she has, in the course of her professional activities, inflicted too many questions on others to have the right to refuse one now, Professor Komarovsky complied.

Again we quote: "Some of our goals we share with all the Social Science Departments—others are more uniquely our own. We hope to develop in our students a love of truth and a spirit of genuine intellectual inquiry precisely in an area in which these intellectual virtues are hardest to attain—the field of social institutions, social problems, and human relations. It is so much easier to be objective about neurons or chromosomes! This study should help to free the students' thinking from provincialisms and enable them to see society whole. We strive to instill in them an habitual concern for the larger social consequences of behaviour and policies.

"In addition our job is, of course, to transmit to students knowledge of our field, its facts, its organizing principles and problems. A few of our majors become professional sociologists; others go into social work, government work, business research, and so on. We are always on the lookout for emerging vocational opportunities for sociology majors.

"Our main task, however, is, together with other departments, to contribute to the liberal education of the student, to raise the level of her life, and to make her a more sensitive and a more perceptive and, perhaps, a wiser individual and member of society."

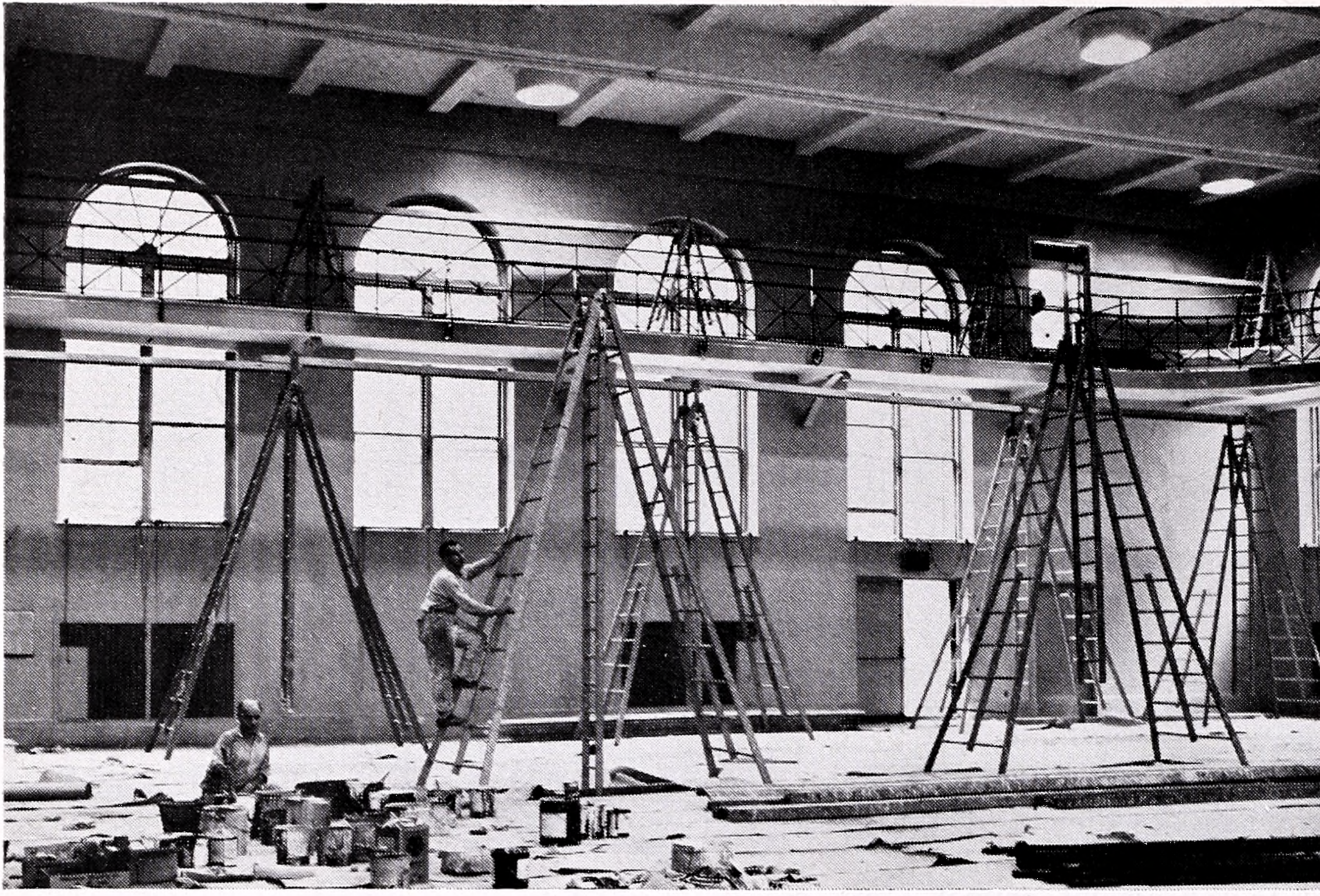
Dear Alumnae:

Many, many thanks for your wonderful response to our S.O.S. in the Monthly for summer jobs for foreign students. As a result, this little group was very quickly placed, plus a number of our American students as well!

Appreciatively,

Ethel Callan Burgess '29

Assistant Director,
Placement Office
(Head of Student Placement)



Barnard's gymnasium was being given a "new look" when this picture was taken before the opening of College. Now it is sporting a new coat of paint—a warm gray, with terra cotta on the back wall of the stage. Other campus changes made during the summer include a repainting (light cinnamon) and sound-proofing of the south dining room, a repainting (Williamsburg blue and yellow) of the north dining room, draperies for both dining rooms, completion of the concrete walk from Barnard Hall to the edge of the "Jungle," the purchasing of eighteen new sets of furniture for student rooms, the converting of electrical equipment in Milbank from DC to AC current, and a complete overhauling of Barnard's greenhouse.

FUND ACTIVITIES

(Continued from page 1)

teen areas to coordinate alumnae solicitation.

The increasing general awareness of Barnard's vital need for endowment funds bodes well for the future of the Fund—and for the future of Barnard!

Helen Goodhart Altschul '07

National Chairman,

Barnard College Development Fund

INSTITUTE IS OUTLINED

(Continued from page 1)

ing organizations are the Association of Junior Leagues of America, the League of Women Voters, the National Council of Catholic Women, the American Association of University Women, the Young Women's Christian Association, and others. In some cases officers of the organizations will attend, while in others a delegate will be selected from each local unit of the organization in the immediate area.

The Institute will offer an opportunity to compare experiences and evaluate techniques. It is believed that the practical values to be gained from the Institute can then be carried by the

delegates to the wider circle of their general membership.

On Friday evening the topic will be: "What Have Women Done with The Suffrage?" Speakers will be Judge Dorothy Kenyon and *Agnes Ernst Meyer '07*, one of the owners of the "Washington Post." Presiding will be Professor Thomas P. Peardon, head of the Barnard College Department of Government.

On Saturday morning there will be a number of workshops guided by a panel of experts. These workshops will be designed to permit all delegates to contribute from their experience to a discussion of such topics as "Running for Office," "Working for Political Parties," "Pressure Groups and Their Uses," "Opportunities for The Individual," "Appointive and Career Opportunities," and "How to Keep Informed."

Discussion leaders for these panels will include Stanley Isaacs, former Borough President of Manhattan; the Honorable Jacob K. Javits; *Louise Talbot Seeley '16*, member of the Board of Representatives, Stamford, Connecticut; Anna Lord Strauss, former national president of the League of Women Voters; Frieda Miller, head of the Wo-

men's Bureau, Washington; *Pearl Bernstein Max '25*, Board of Higher Education, New York City; Mary Donlon, New York State Workmen's Compensation Commission; Dean Lawrence Chamberlain of Columbia College; Rebecca Rankin, Municipal Reference Librarian, New York City and others.

Theme of the Saturday afternoon session will be "What We May Hope to Do in The Future," with the Honorable Chase Going Woodhouse and another unannounced speaker.

Since the Alumnae conference will be combined with the Institute this year, there will be a dinner party on Friday night especially for alumnae, at which Dean McIntosh will speak; this will supplement the Institute program. Also, on Saturday morning, the traditional refresher courses will be given. At 10 A.M. Raymond J. Saulnier, professor of economics, and Douglas S. Moore, professor of music, will lecture, and at 11 A.M. *Mirra Komarovsky '26*, associate professor of sociology and Professor Ernest J. Simmons of Columbia's Russian Department will speak informally.

ALUMNA DONATES TALENT

A unique contribution to Barnard's Development Fund is that of *Eleanor Pepper '24*, who acted as the College's interior decorator for the remodelling program in the dining rooms and the gymnasium this summer. (See the photograph and caption on page 6 of this issue.)

Miss Pepper, who is particularly well known for her outstanding work in the United Nations building at Lake Success, divided her fee in half, giving the remaining portion as her contribution to the Development Fund.

CLUBS GIVE TO FUND

The following contributions were made to the Development Fund by alumnae clubs during the 1949-50 fiscal year which ended this July: the Barnard Botanical Club, \$2,900.58; the Barnard College Club of New York, \$864; Barnard in Westchester, \$580; Barnard in Detroit, \$250; Barnard in Brooklyn, \$400; and Barnard in Bergen, \$400.

This list includes money donated for scholarships, but does not include gifts from club members who have contributed individually.

CLUB NOTES

BERGEN

The Executive Committee of the Bergen County Club met September 19 to draw up plans for the coming year. The present schedule calls for six meetings on the third Monday of every month excluding December and March.

The first meeting will be at the Girl Scout Little House in Teaneck on Monday, October 6. There will be a pot luck supper after which *Helen Chamberlain '30* will talk about her travels in England and the continent during the summer.

CHICAGO

The Woman's College Board and the University of Chicago are sponsoring a fall lecture series entitled "Know your Chicago." A representative from the Barnard group in Chicago is a member of the planning committee.

The five lectures will be held in the club room of the Art Institute of Chicago at eleven o'clock Friday mornings on October 6, October 20, November 3, November 17, and December 1. On the Wednesday following each lecture, there will be a field trip. All Barnard alumnae in the Chicago area are invited to attend.

PHILADELPHIA

The annual June picnic which was held at the home of President *Katharine Browne Stehle '25*, with *Edith Kirkpatrick Peters '30* as co-hostess, climaxed the Philadelphia club's 1949-50 activities. Barnard alumnae, their husbands and children, participated in the day's activities.

SAN FRANCISCO

Professor Lucyle Hook of the Barnard English Department was entertained at tea at the home of *Marcella Meyer Bier '27* in July. Miss Hook spoke to the club about the news from Barnard and about New York with emphasis on the theatre, her specialty.

Those present were *Mathilde Drachman Smith '21*, *Ethel Lewis Lapuyade '37*, *Edyth Fredericks '06*, *Marian Riley Beggs '40* and *Susan Minor Chambers '11*.

Other Barnardites visiting San Francisco this summer were *Irma Heider Kaufmann '11*, *Marian Oberndorfer Zucker '11* and *Lilian Egleston '10*.

WASHINGTON, D. C.

At the final meeting of the 1949-50 year the club elected the following slate of officers for the coming year: president, *Constance Ridgway Grant '30*; vice-president in charge of programs, *Gloria Rothenberg Finn '44*; vice-president in charge of publicity, *Ann Cottrell Free '38*; secretary, *Mary McPike McLaughlin '33*; treasurer, *Elizabeth Marting '34*.

CLASS NOTES

BIRTHS

'33 *Ruth Conklin Syer*, Wendy Louella, April 17.

'35 *Roselle Riggan Davenport*, first child, Anthony Wyatt, June 17. . . . *Ruth*

Saberski Goldenheim, third child, Paul David, April 18.

'37 *Edna Fuerth Lemle*, twins, second son and second daughter, Douglas Leonard and Deanne Joan, February 12.

'38 *Shirley Hageman Willett*, first child and daughter, Tracy, June 12.

'39 *Louise Comer Turner*, third child and second daughter, Amy Forsyth, May 17. . . . *Emma Smith Rainwater*, Elizabeth Ann, June 16.

'40 *Isabel Gleasing Lee*, Deborah, April 30, 1948. . . . *Jane Kass Rothstein*, second daughter, Julie, March 19.

'41 *Eleanor Gans Lippman*, second son, David Charles, July 30. . . . *Elizabeth Smith Neill*, second child and first daughter, Barbara Frances, July 15. . . . *Ruth Stevenson Carpenter*, Chadwick Hunter, June 16.

'42 *Evelyn Gonzales Best*, third child and first son, August 1949. . . . *Doris Bayer Coster*, second child and first son, Peter Howard, June 6.

'43 *Deborah Burstein Karp*, first child and son, Hillel Judah, June 28. . . . *Grace Glass Marwell*, Emily, May 27.

'44 *Carmel Prashker Ebb*, first child, Nancy Elizabeth, July 16. . . . *Alice Keller Stanley*, second child and first son, Burns Stephen, June 29.

'45 *Aldine Engelhardt Dunn*, Lawrence. . . . *Edythe Hearst Layne*, first child, Fredric Blair, July 28. . . . *Ruth Bischoff Hucklebridge*, first child, Kathryn, Dec. 6. Husband Ted is a track coach, Riverside College, Calif.

'46 *Evelyn Bialer Gresser*, Deborah, June 9. . . . *Patricia Henry Mayell*, first child, Hillary Claire, June 3.

'47 *Charlotte Korany Eloquin*, first child, Mary Louise, May 25.

'48 *Mary Ellen Hoffman Flinn*, Juliana Barbara, June 22. . . . *Claire Schindler Collier*, second daughter, Janet Lynn, June 21.

GRADUATE STUDY

'50 *Mary Andrews*, *Dorothy Clark*, *Winifred Evers*, *Mary Jean Huntington*, *Carol Leni*, *Zelma McCormick*, *Silvia Pfeiffer*, *Marilyn Schulhof*, *Claudine Tillier*, *Helen Wheeler*, all attending Columbia University. . . . *Nancy Gulette*, Indiana University. . . . *Barbara Hyde*, University of California. . . . *Sally Salinger*, Western Reserve University. . . . *Joyce Engelson*, N. Y. School of Social Work.

. . . *Eleanor Holland*, Union Theological Seminary. . . . *Barbara Jacks*, N. Y. U. Law School. . . . *Pauline Gostinsky*, Long Island College of Medicine. . . . *Ellen Robinson Clay*, University of Paris. . . . *Joan Houston*, The Sorbonne. . . . *Mildred Moore*, Mt. Holyoke, physics assistant.

MARRIAGES

'13 *Helen Crosby-Walter M. West*, Aug. 12.

'16 *Edith Levy-Jack Rappaport*, attorney, N. Y. C.

'34 *Sonja Borgeson-Charles Baker*, with Schoen Printing Co., N. Y. C., July 29.

'35 *Louise Dreyer-Hugh MacKay*, Aug.

'41 *Dorothy Pierce-Claude B. Worley*, a mechanical engineer, May 27.

'43 *Catherine Clark-Sтивен Danatos*, June 3. . . . *Marion Davis-Roberto Berdecio*.

'44 *Adeline Pope-Robert McConnell*, June 14. . . . *Margaret Hine-William Hurley*, July 29.

'45 *Edith Goldsmith-Lewis Rosenthal*, C. C. N. Y. alumnus, Aug. 13. . . . *Elizabeth Schreiner-David Armstrong*, with Johnson and Higgins, insurance, N. Y. C., Aug. 19. . . . *Elizabeth Whetsel-Richard Boyt*.

'46 *Annette Donaldson-W. Borden Mackenzie*. . . . *Winona Beamer-C. O'dell Steppe*, with the "Star-Bulletin," Honolulu, June. . . . *Barbara Klar-John Kaim*, Columbia graduate, Aug. 27. . . . *Francine Scileppi-Daniel Petruzzi*, Muhlenberg College and Columbia Journalism alumnus, with Burlington Mills Corp., N. Y. C., Aug. 19. . . . *Doreen Miller-George Younger*, U. S. Air Reserve, Aug. . . . *Doris Clark-Albert E. Tucker*.

'47 *Gloria Draudin-Michael Grieco*, April, 1949. She writes from Norwich, Conn., "At present, we're playing nursemaid to 9,000 chickens." . . . *Elaine Mackenzie-John B. Hill*, Univ. of Wisconsin and Columbia graduate, now attending P&S, Aug. 21. . . . *Ruth Read-Hrishi Kesan*, residing in India. . . . *Rose Shermer-Victor Lenchner*. . . . *Marcella Novak-Lawrence L. Crandell*. She holds the Lydia C. Roberts Fellowship in English, Columbia. . . . *Betty Troper-Dr. Alfred Yager*, June 25.

'48 *Will Eva Gray-Warren C. Foote*, Aug. 5. . . . *Hope Howieson-Jerome Grunt*, anatomy instructor, studying for Ph.D., Kansas University, July 29. . . . *Jean Mansfield-George W. Carey*, June. . . . *Genevieve Trevor-Howell Nomer*, Rutgers graduate, with American Book Co., N. Y. C., Aug. 19. . . . *Lenore Zohman-Nathaniel Lenchner*.

'49 *Betty Anderson-William A. Shine, Jr.*, Iona College alumnus, Aug. 12. She is with Empire Trust Co., N. Y. C. . . . *Phyllis Holle-Theodore Denno*. . . . *Marcella McGinnis-Duncan MacLeod*, now in Italy, June. . . . *Marion Steele-Sidney Kelly, Jr.*, Columbia Law School graduate, July 1. . . . *Agnes M. Yanoshat-George Agzarian*, June, 1949.

'50 *Norma Allen-Donn Gaebelein*, Sept. 6. . . . *Nancy Brownley-Philetus Holt III*. . . . *Mary Carroll-Edwin Nelson*, June 27. . . . *Margaret Chew-Earle Welch*, Dartmouth graduate, with American Express Co., Paris, Aug. 12. . . . *Naomi Cooper-Arthur Kimmelfield*, June 12. . . . *Ruth Conklin-Dr. Angelo Toigo*, June 17. . . . *Hadassah Dunitz-Sherman Stein*, June. . . . *Stella Koischwitz-M. M. Delacorte*, June 10. . . . *Katie Lihn-Jerry Cohen*, June 18. . . . *Ruth Osborn-Robert Daisley*, June 10. She is a secretary, International Labor Office, U. N., N. Y. C. . . . *Laura Pienkny-Jacques Zakin*. She is an assistant, public relations dept., Legal Aid Society, N. Y. C. . . . *Virginia Potter-Hans Held*, Sept. 2. Both will study in Europe, he for the doctorate, she under a Fulbright Scholarship. . . . *Yolanda Pyles-Edwin Wesley*, July 1. . . . *Geraldine Sforzini-William Hettler*. . . . *Dorothy Sorzano-Alan Obre*, Columbia alumnus studying for M.A., Columbia, Aug. 26. . . . *Nada Vodenlitch-Raymond Scalettar*.

• DEATHS

'95 *Celeste Swenson*, former chairman, Latin dept., Richmond Hill High School, Aug. 25.

'06 *Marie Gelbach*, July 30, 1948. . . . *Florence Wise Blackstone*, July 20.

'12 *Cora Thees Crawford*; class vice-president; active in Rockland Co. Development Fund campaign; former president, Women's Civic League and Women's Republican Club of Nyack, N. Y., July 22.

'21 *Marie Luckenbacher*, Los Angeles Barnard Club treasurer, July 3.

• JOBS

'18 *Helen MacLachlan*, medical assistant, Westchester Cancer Committee, Bronxville.

'20 *Lucy Rafter Morris*, teacher, East Woods School, Cold Spring Harbor, N. Y.

'23 *Helen Hoffman*, teacher, Ellis Country School, Newton Square, Pa.

'25 *Gertrude Oellrich*, lecturer in library service, New Jersey College for Women.

'27 *Edith Haldenstein Rafton*, statistician, Health Center, New York Hotel Trades Council, N. Y. C.

'30 *Katherine Brehme Warren*, assistant professor, biology, Hofstra College.

'37 *Amy Schaeffer*, news writer, Voice of America, U. S. State Dept.

'39 *Barbara Yacubovsky*, translator and editorial assistant, Charles A. Meyer Co., N. Y. C. . . . *Janet Younker*, with Diebold Inc., safes, N. Y. C.

'40 *Marie Boyle*, assistant, research dept., Philadelphia Zoological Gardens.

'41 *Winifred Hessinger*, recreation director, U. S. Army, Germany. . . . *Frances*

Phelps, music theory teacher, Rosary College, River Forest, Ill. She has an M.A. from the American Conservatory of Music. . . . *Lucia Quintero*, publicity staff, Venezuela Air Lines, also with Hansman & Winter, Inc., printing, N. Y. C.

'42 *Rebecca Allinson Immanuel*, correspondent, Book-of-the-Month Club.

'43 *Carol Ann Hawkes*, English composition teacher, Katharine Gibbs School, N. Y. C.

'44 *Barbara Meyer*, music assistant, W.Q.X.R., N. Y. C.

'45 *Katherine Carson*, with American Legation, Vienna. . . . *Sally Good*, EUCOM Special Services librarian, U. S. Army Nuremberg, Germany. . . . *Virginia Conway Littau*, research worker, Tuberculosis Research Laboratory, Federal Security Agency. . . . *May Edwards*, librarian and English tutor, Beard School, East Orange, N. J. . . . *Mary Lucchi*, clerk-stenographer, raw materials division, Atomic Energy Commission, N. Y. C.

'46 *Josefina Castello*, receptionist-secretary, Calhoun School, N. Y. C. . . . *Ruth Farrell*, English and social studies teacher, Riverdale Country School, N. Y. C. . . . *Juliane Heyman*, with U. S. Army, Japan. . . . *Catherine O'Neill*, biology and zoology teacher, Penn Hall, Chambersburg, Pa.

'47 *Jacqueline Branaman*, with U. S. Dept. of State, Russia. . . . *Evelyn Good*, physical education teacher, Laurel School, Cleveland, Ohio. She just received her M.A. from T. C. . . . *Jean Heinz*, first and second grade teacher, Annie Wright Seminary, Tacoma, Wash. . . . *Shaigan Kiachif*, relief secretary and interviewer, personnel office, Presbyterian Hospital, N. Y. C. . . . *Roberta Paine*, residence warden, Bryn Mawr College. . . . *Lilian Saroli*, secretary, American Institute of Accountants. . . . *Nancy Stevens*, assistant registrar and instructor in social studies, personnel and guidance, N. J. State Teachers College, Newark. . . . *Natalie Trousof*, laboratory technician, State College of Washington, Pullman.

'48 *Babette Brimberg*, news reporter, "Philadelphia Dispatch." . . . *Dorothy Buschow Killackey*, staff, placement bureau, N. H. Dept. of Education, Concord. . . . *Barbara Burtner*, executive secretary, Harrisburg, Pa., Symphony Orchestra Assoc. . . . *Hertha Haberland*, assistant, director of International Scholarships, N. Y. C. . . . *Betty Kirschner*, production assistant, Goodson-Todman Co., television packaging firm, N. Y. C. . . . *Jean Meszaros*, radiation physicist, X-ray therapy dept., Temple University Hospital, Philadelphia. She received her M.A. from Indiana University. . . . *Ruth Montgomery*, assistant professor of English, Davis and Elkins College, Elkins, W. Va. . . . *Grace Peters*, laboratory technician, Atomic Energy Commission, Oak Ridge, Tenn. . . . *Rae Robinson*, librarian, Hunter College. She was just awarded an M.A. from Columbia University School of Library Service. . . . *Marian Vans-Agnew*, histological technician, Atomic Bomb Casualty Commission, Hiroshima.

'49 *Loretta Betke*, fifth grade teacher, Elgin, Ill. She received the M.Ed. degree from the Graduate Teachers College of Winnetka, Ill. . . . *Norma Ann Coke-Jephcott*, office position, Harvard University. . . . *Eleanor deAntonio*, staff member, employee relations dept., Gulf Oil Co., N. Y. C. . . . *Alba-Marie Fazia*, with communications dept., American Embassy, Paris. . . . *Jewel Fewkes*, Spanish and French teacher, Adelphi Academy, Brooklyn. . . . *Genevieve Fisch*, secretary, Marsh and McLennan, insurance, N. Y. C. . . . *Jean Marie Haule*, with recreation branch, U. S. Army, Japan. . . . *Dorothy Horsfall*, liaison worker between Fulbright students and Belgium education agency, U. S. Embassy, Belgium. . . . *Marion Steel Kelly*, stenographer, Commodity Research Bureau, Inc., N. Y. C. . . . *Mildred Lazarus*, research assistant, radiation laboratory, University of California, Berkeley. . . . *Sara Lewis*, with Institute of International Education. . . . *Dorothy Partington*, sixth, seventh, and eighth grade teacher, Board of the Christian School, Middletown, Pa. . . . *Rosary Scacciaferro*, with library, School of Commerce, C.C.N.Y. . . . *Elizabeth Werth*, assistant, medical library, Columbia University.

'50 Teachers: *Maureen McCann*, class 2, Brearley School, N. Y. C. . . . *Ellen Fishbein Weiss*, kindergarten crafts, Dedham Country Day School, Boston. . . . *Isabelle Welter*, grades 2-4, Bolton School, Westport, Conn.

Librarians: *Juanita Gundles*, N. Y. Public Library. . . . *Anna Hicks*, Boston University Liberal Arts Library.

Lab workers: *Rose Sgammato* and *Helen Petriti*, N. Y. Hospital, Payne Whitney Clinic. . . . *Nancy Leinninger*, E. W. Drew & Co., industrial chemistry. . . . *Esther Rivkin*, Jewish Memorial Hospital, Ohio.

Social workers: *Frances Zirn*, Bureau of Family and Child Welfare, Westchester County. . . . *Bernice Fiering Solomon*, Dept. of Public Welfare, Westchester County.

In the field of merchandising: *Nancy Amick*, B. Altman & Co. . . . *Joan Demarest*, Associated Merchandising Corp., N. Y. C. . . . *Mary Louise Luginbuhl*, Abraham & Strauss, Brooklyn. . . . *Esther Mendelsohn*, Macy's, N. Y. C.

Elizabeth Bean, sales correspondent, Henry Holt & Co., publishers, N. Y. C. . . . *Joy Dueland*, secretary, Donald Oenslager, theatrical designer, N. Y. C. . . . *Margot Louria*, secretary, Foreign Policy Assoc., N. Y. C. . . . *Vilma Mairo*, bilingual secretary, export manager, Burlington Mills, Inc., N. Y. C. . . . *Anne Modr*, secretary, Devalite Corp., N. Y. C. . . . *Margarida Pyles*, bilingual secretary, Brazilian delegation to U. N., N. Y. C. . . . *Dorothy Sorzano*, secretary, American Cancer Society, N. Y. C. . . . *Barbara Turek*, secretary and executive assistant, court stenographer, N. Y. C. . . . *Renate Hanlein*, secretary, Jacques Seligman Art Galleries, N. Y. C. . . . *Eleanor Peters*, statistician, U. S. Pulp Products Assoc., N. Y. C. . . . *Barbara Schuster*, junior executive, Concert Hall Society, N. Y. C. . . . *Barbara Ruppel*, statistician, General Foods Corp., N. Y. C. . . . *Beverly Beck Fuchs*, assistant to *Margaret Moses Fellows '17*, supervisor, public relations and fund raising, Children's Aid Society, N. Y. C.