

**BARNARD
COLLEGE
ALUMNAE**

**M
O
N
T
H
L
Y**

CXIII No I

**BARNARD COLLEGE
ARCHIVES**

**O
C
T
O
B
E
R**

Follow *the different* FURNESS *trail*
through the

WEST INDIES

BE *different!* See the small, foreign, fascinating islands of the REAL West Indies with Danish, British, French, even *Hindu* atmosphere and the only Carib settlement in existence! Enjoy them all on a leisurely Furness cruise, with lots of time ashore and lots to see and do—golf, tennis, polo, cricket, swimming, dancing and wonderful scenic drives! Famous cruise-ships “Fort St. George,” and “Nerissa” provide traditional Furness luxury with complete cruise program of sports and entertainment. No “extras”—you live aboard ship all the way.

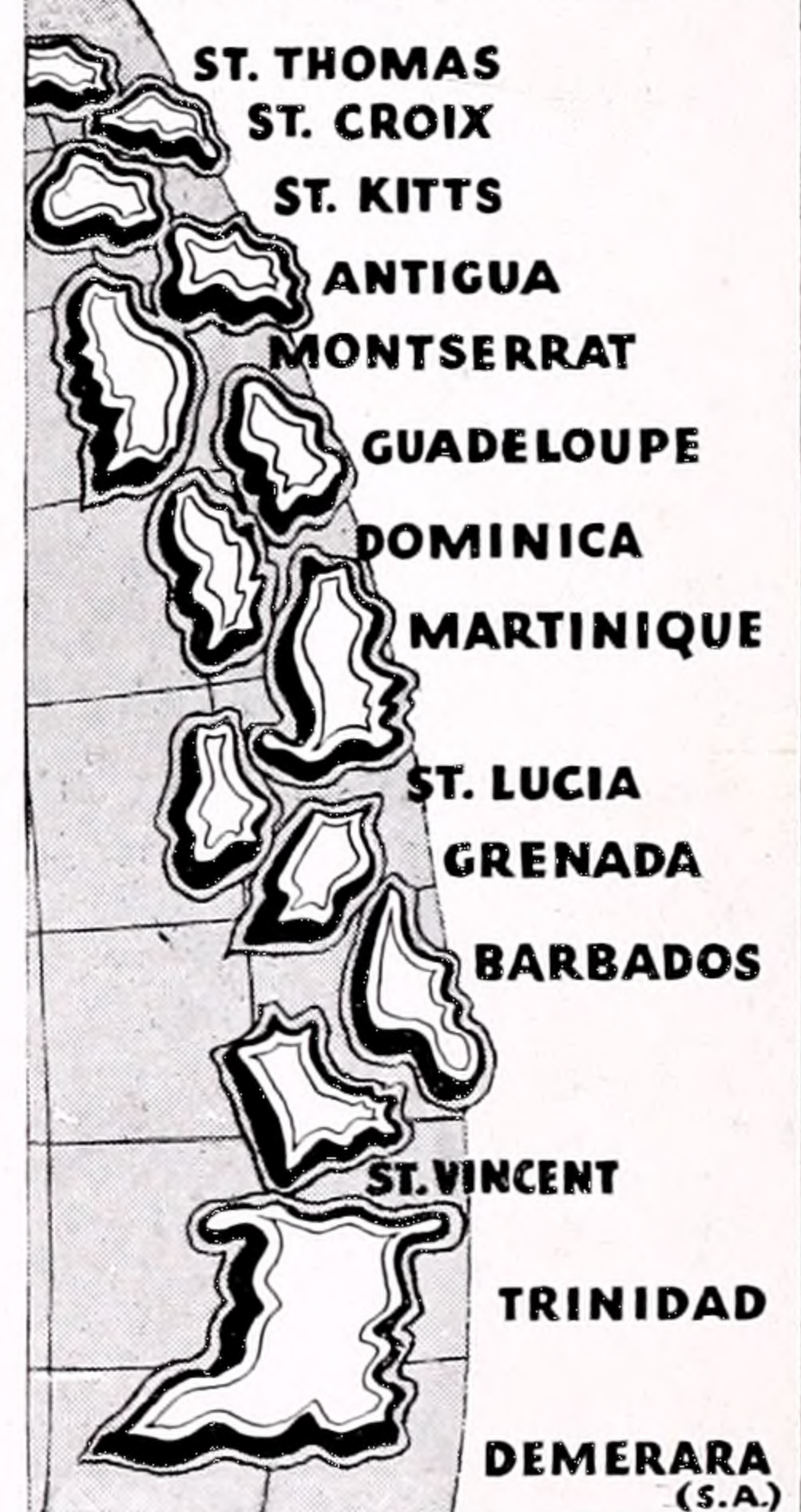
FREQUENT SAILINGS
FROM NEW YORK

FURNESS WEST INDIES LINE

34 Whitehall St. (where Broadway begins)
565 Fifth Ave., New York or local agent

23 days

\$135^{up}



C O N T E N T S

	<i>Page</i>
COMING EVENTS	2
OFFICERS OF THE ASSOCIATE ALUMNAE	2
ON AND OFF THE CAMPUS	3
November 2nd, Professor Moley	3
Our Dream Comes True	3
Barnard-in-Westchester	4
Faculty Footnotes	4
Have You Heard	5
COMMENT	5
FROM THE DEAN'S OFFICE	6
MABEL SMITH DOUGLASS, An Appreciation	6
PROJECTIONS—Alice Draper Carter	7
FUND PERSONALITIES	8
THE ALUMNAE FUND	9
The Trustees' Thanks	9
Retrospect—The Chairman's Report	9
Prospect—The Dean's Viewpoint	9
Sidelights	10
Alumnae Fund Committee for 1933	12
Contributors to the Alumnae Fund	13
Class Gifts	17
Reunion Classes	18
Financial Statement	19
Alumna, What Now?	20



E D I T O R I A L B O A R D

HELEN LEPAGE CHAMBERLAIN, *Editor-in-Chief*
MARIAN MANSFIELD MOSSMAN, *Business Manager*

EMMA BUGBEE	CELESTE COMEGYS PEARDON
EVA HUTCHISON DIRKES	RUTH RICHARDS
CLARE M. HOWARD	VIRGINIA STREIT
DOROTHY MALONEY JOHNSON	MARIAN CHURCHILL WHITE
IONA MACLEAN	DOROTHY WOOLF
HELEN ERSKINE, <i>Ex-officio</i>	GERTRUDE H. RESSMEYER, <i>Ex-officio</i>

ADVISORY BOARD

BEULAH AMIDON	ALICE DUER MILLER
FREDA KIRCHWEY	HELEN ROGERS REID
AMY LOVEMAN	DOROTHY GRAFFE VAN DOREN

Published by the Associate Alumnae of Barnard College, Barnard College, New York City, nine times yearly. Single copy, twenty cents; subscription per year, \$1.50.

COMING EVENTS

(This includes college events to which alumnae are invited)

Please watch this space for all alumnae announcements as routine notices will no longer be mailed to graduates.

•OCTOBER

17th—Tuesday

Alumnae Recreational Classes—Opening of Winter Session.

Registration—7-9:30 p. m.—Barnard Hall

24th—Tuesday

College Assembly—NRA Program. Speaker: Professor Raymond C. Moley—1:10 p. m.—Gymnasium

Alumnae Recreational Classes—Registration—7-9:30 p. m.—Barnard Hall

Meeting: Board of Editors—Alumnae Monthly—8 p. m.—Alumnae Office

30th—Monday

Meeting: Board of Directors of the Associate Alumnae—4 p. m.—Alumnae Office

31st Tuesday

College Assembly—1:10 p. m.—Gymnasium

Alumnae Recreational Classes—Registration—7-9:30 p. m.—Barnard Hall

•NOVEMBER

1st—Wednesday

ALUMNAE - UNDERGRADUATE TEA* — 4-5:30 p. m.—College Parlor

2nd—Thursday

ALUMNAE LECTURE — PROFESSOR RAYMOND C. MOLEY—"Education and Politics"—8:15 p. m.—Brinckerhoff Theatre

4th—Saturday

Glee Club Concert (Information in regard to tickets may be obtained at the Alumnae Office after October 20th)

7th—Tuesday

Alumnae Recreational Classes—8-10 p. m.—Barnard Hall

14th—Tuesday

College Assembly—1:10 p. m.—Gymnasium

Alumnae Recreational Classes—8-10 p. m.—Barnard Hall

21st—Tuesday

College Assembly—1:10 p. m.—Gymnasium

Alumnae Recreational Classes—8-10 p. m.—Barnard Hall

Meeting: Board of Editors—Alumnae Monthly—8 p. m.—Alumnae Office

28th—Tuesday

Thanksgiving Service—1:10 p. m.—St. Paul's Chapel
Alumnae Recreational Classes—8-10 p. m.—Barnard Hall

*The Membership Committee of the Associate Alumnae is again arranging Alumnae-Undergraduate Teas for the first Wednesday in every month during the academic year. The tea on November the first, will be given in honor of the Freshman Class. Special announcements in regard to subsequent teas will be made in the Alumnae Monthly.

The Associate Alumnae of Barnard College

Officers for the Year 1933-1934

<i>President</i>	Miss Helen Erskine, 1904
<i>First Vice-President and Chairman of Finance Committee</i>	Dr. Anna I. Von Sholly, 1898
<i>Second Vice-President and Chairman of Reunion Committee</i> ..	Mrs. Renee Fulton Mazer, 1926
<i>Secretary</i>	Mrs. Joseph O. Skinner (Mary Budd), 1902
<i>Treasurer</i>	Miss Lilian M. Wardell, 1907

Directors

Dr. Alice Rheinstein Bernheim, 1917	Mrs. Frederick Ronald Mansbridge (Georgia Mullan), 1930
Mrs. Reginald Hunter Colley (Mary Stewart), 1913	Miss Frances K. Marlatt, 1921
Miss Virginia Elizabeth Cook, 1929	Mrs. Frederick W. Rice (Madeleine Hooke), 1925
Mrs. Robert F. Dirkes (Eva Hutchison), 1922	Miss Isabel Totten, 1915
Mrs. Philip B. Holmes (Nelle Weathers), 1924	Mrs. Paul Mack Whelan (Dorothy Herod), 1914
Mrs. James Lees Laidlaw (Harriet Burton), 1902	Miss Jennie Dwight Wylie, 1909

Alumnae Trustees

Mrs. William L. Duffy (Ellen O'Gorman), 1908	Mrs. Paul Strong Achilles (Edith Mulhall), 1914
Auditor	Miss Lillian S. Walton, 1914
Clerk	Mrs. Daniel Norden (Hazel Reisman), 1930
Executive Secretary	Miss Gertrude H. Ressimyer, 1920

Committee Chairmen

Alumnae Council	Mrs. George Endicott (Ellinor Reiley), 1900
Students' Loan Committee	Miss Louise C. Odencrantz, 1907
Nominating Committee	Miss Edith M. Deacon, 1912
Committee on By-Laws and Legislation	Miss Helen H. Robinson, 1927
Advisory Vocational Committee	To be elected
Membership Committee	Mrs. Reginald Lee Johnson (Dorothy Johnson), 1923
Alumnae Association Endowment Fund Committee ..	Miss Elsa G. Becker, 1914
Committee on Foreign Students	Mrs. Corliss Lamont (Margaret Irish), 1925
Committee on Continued Education	Mrs. Louis I. Dublin (Augusta Salik), 1906
Alumnae Fund Committee	Mrs. Florence deL. Lowther, 1912.

BARNARD COLLEGE

ALUMNAE MONTHLY

ON AND OFF THE CAMPUS

November 2nd, Professor Moley

IN Brinckerhoff Theatre, on Thursday evening, November the second at 8:15, Professor Moley will address the alumnae on "Education and Politics." The Committee on Continued Education take great pride in being able to present this distinguished statesman as the first speaker of the new season.

Busy as is Professor Moley, preparing for the initial issue of *To-Day*, he has found time to accept without hesitation, Mrs. Dublin's invitation to talk to Barnard graduates who have followed his distinguished career with such interest and pride.

An educator of note, professor of Public Law at Columbia and head of the department of Government at Barnard, Professor Moley has occupied a unique position close to President Roosevelt as head of the so-called "brain trust." There is obviously no other person better fitted to discuss "Education and Politics."

At Barnard, Ten Years

Professor Moley's association with Barnard began ten years ago when he came to organize our work in Government. His sorties into practical politics have included work as Research Director for the Commission on the Administration of Justice under Franklin D. Roosevelt, then Governor of the State of New York. He is the author of several books based on his research into the actual administration of Justice, in various cities and states, including "Politics and Criminal Prosecution," "Law and its Enforcement" and "Tribunes of the People."

The Government department has grown under the stimulation of this man who has cried aloud

the need of educated critics in practical politics. His influence and his philosophy of Government have been felt throughout the world in the past few years, showing that a voice, trained as was his, need not always cry in the wilderness.

That Barnard alumnae will recognize and seize this opportunity to hear this distinguished member of the faculty is certain. We suggest that you plan to arrive early.

Our Dream Comes True

WITH THE formal opening of the Barnard College Camp, appropriately located on Journey's End Road, Croton-on-Hudson, a long cherished dream of the alumnae found fulfillment on Sunday afternoon, October 15th. Miss Gildersleeve presided over the simple exercises held on the front porch of the log cabin before a large group of distinguished guests, alumnae, faculty and undergraduates. In recognition of the six years of effort by the alumnae leading to the raising of the camp fund, Miss Helen Erskine, president of the Associate Alumnae, presented the key of the cabin to the Dean. Miss Gildersleeve accepted the camp for the college and turned the key over to Miss Margaret Holland, the faculty camp chairman, who, in turn, passed the key to Delphine Dowling, '34, the student camp chairman.

Camp Available to Alumnae

The camp has already been in use for several week-ends during the fall and the camp committee is working on plans to allow as many groups as possible to enjoy a week-end at the camp. Special dates will be set aside when the camp will be at

the disposal of the alumnae. Clubs, departments, classes and dormitories are also hoping for week-end excursions to the country.

The cabin has been built to accommodate about twenty over night. The committee, seeking to make the cost of a week-end as small as possible, has arranged that the work be planned cooperatively. The only cost, therefore, will be a small charge for cleaning, food and transportation.

The operating committee for the camp includes Aileen Pelletier, '33, as alumnae representative, J. Emilie Young, '19, as faculty representative, Margaret Holland, faculty chairman, and Delphine Dowling, college chairman. Each class will have two representatives on this committee which will function as an administrative body determining policies for the camp management and the allotment of week-ends.

The building committee composed of Mrs. Duffy, Mr. Swan and Professor Wayman with Miss Gildersleeve as chairman, will continue to act in an advisory capacity.

Barnard-in-Westchester

AT a large bridge held late in September, Helen M. Johnson, '28, president of the Mount Vernon Barnard Club, announced the rapid progress of plans for the organization of Barnard alumnae throughout the county. The Barnard-in-Westchester committee headed by Emily Riedinger, '30, has arranged for a meeting of those alumnae interested on Wednesday evening, October 18th, in the Mount Vernon High School Auditorium.

The Mount Vernon group has always welcomed guests from other parts of the county, but this past year, the applications for membership became so many, it was felt that a county club was essential. To ascertain the probable strength and popularity of such a move, the local group mailed questionnaires to approximately 500 alumnae residing in Westchester county. By October 1st, 160 favorable replies had been received indicating the spontaneous demand for a county organization.

The organization meeting on the 18th will discuss the plans and policy of the new club, the discussion to be based on a preliminary constitution drafted by Elizabeth Brooks, '22, of New Rochelle and her committee. Publicity for the new group is being handled by Mrs. A. T. Kander (Jeannette Unger, '14) of Pelham.

Diverse Program Planned

The committee, in discussing a possible program for Barnard-in-Westchester, indicated that the social activities found so enjoyable at the New York

club and elsewhere, would be given a prominent position, the sponsoring of lectures, concerts, teas, dances and bridges. In addition, it is hoped that such a club will prove valuable in contacting prospective students for the college, in meeting and helping undergraduates who are county residents, and eventually, perhaps, in establishing a scholarship for a resident of Westchester county whose college record is satisfactory but who could not complete her course without financial assistance. The constructive and useful projects open to such a county group, as well as the social, are boundless. The enthusiasm which has marked these first steps taken by the Mount Vernon group is reminiscent of the spontaneous beginnings of the now flourishing Barnard College Club of New York.

Miss Riedinger points out that the list of former Barnard students in the county is necessarily incomplete since no record is available of the more recent classes, of non-graduates, or of new arrivals in Westchester. Any former students who have not received a questionnaire or a notice of the October 18th meeting should communicate with Miss Riedinger, 26 South 15th Avenue, Mount Vernon, at once, in order that they may be included in the first season's activities.

Officers of the Mount Vernon Club which is sponsoring this venture are Helen M. Johnson, '28, president; Frances K. Marlatt, '21, vice-president; Elberta Schwartz, '31, secretary; Elizabeth Adams, '32, treasurer; and Mrs. George L. Close (Edna C. Chapin, '02), Bessie Downs, '15, Edna Wetterer, '22, directors. With Emily Riedinger on the Barnard-in-Westchester Committee are Florence Beaujean, '28, and Helen Appell, '32.

Faculty Footnotes

WHERE were they this summer? Well, a great variety of places! . . . PROFESSOR CLARE HOWARD spent the summer in England. . . . MRS. LOWTHER lived in the new cottage she has just built on Candlewood Lake in Connecticut and PROFESSOR BRAUN rebuilt his Canadian cottage which burned down last summer. . . . PROFESSOR MACIVER was also in Canada. . . . PROFESSOR RICCIO conducted a group of students on a tour of Italy and then spent the rest of his time in Tuscany, near Florence, where he worked on a book and relaxed. . . . MISS CARBONARA "sunbathed" at Long Beach, Long Island, and MR. TRACY "sweltered" in Tennessee. . . . PROFESSOR LEDUC visited in Chicago and, of course, at the Century of Progress. . . . PROFESSOR GREGORY went to Princeton, Massachusetts, and PROFESSOR WILLIAM HALLER to Holland, Massachusetts. . . . PRO-

PROFESSOR MARCIAL-DORADO was in Spain. . . . PROFESSOR HUTCHINSON remained in New York to work on a book on the "Consumer." . . . MRS. GATES was up in the country at Yorktown Heights, New York. . . . MRS. BAKER went out west to see her family. . . . PROFESSOR PUCKETT worked in the library at Leipzig on modern German literature.

Have You Heard

. . . of the exceptional record made by FRANCES SMITH, '32, at the London School of Economics, where she studied last year as the holder of our Student International Fellowship. We quote from a letter sent to Miss Gildersleeve by Professor Harold J. Laski, "I think you might like to know how well satisfied we were with Miss Frances Smith during the year she spent with us. Her work throughout was of high quality, and she showed great acuteness both in choice of interest, and ability to discover the kind of material relevant to her work. She was certainly one of the best of the American students who have come my way."

. . . that our assistant to the Dean in charge of Admissions, is, since August 31, 1933, MRS. RAYMOND BROWNE. She is still Mary V. Libby to her public however.

. . . that AGNES ERNST MEYER, '07 (Mrs. Eugene Meyer) has added to her already wide responsibilities by becoming the vice-president of the *Washington Post* which was purchased by her husband this spring.

. . . that on June 28th, MARY E. CALHOUN, '05, headmistress of the Calhoun School, spoke over WEA and a net-work of 38 stations, on "Giving the Child the Right Approach to Life."

. . . that DR. KATHERINE C. REILEY, associate in Greek and Latin on our Faculty, and sister of Ellinor Reiley Endicott, '00, has been appointed head of Johnson Hall, due to the illness and subsequent absence of ELIZA BUTLER, '01.

. . . that MABEL PARSONS, '95, is in Seattle, Washington, where she expects to stay until after Christmas. On her return trip she plans to stop in San Francisco before resuming her residence at the Bolivar, in January.

. . . that HELEN PORTER, '11, was the adventurer to find the site of the new Barnard camp, thereby winning the \$5.00 offered as reward by MARIE MASCHMEDT FUHRMANN, '11. Miss Porter has generously divided her winnings between the camp fund and the MONTHLY which carried the news of the challenge. We are very grateful.

. . . that MARGUERITE ENGLER SCHWARZMANN, '14, lectured during August at the Lincoln Summer Experimental School on the Neurath Pictographic

Method of Presenting Comparative Facts and Data. Mrs. Schwarzmann is interested in bringing this method to the level of children in the elementary schools in the United States.

. . . that GRACE SMITH WAITE, '26, and CELESTE JEDEL, '31, are assistants to Professor Moley, working with him on *To-Day*.

. . . that MARGARET MOCHRIE, '20, is the only woman on the editorial staff of a new publication "*University*." A short story by SARA ELIZABETH RODGER, '30, appears in the last issue.

. . . that MARJORIE MARKS JACOBSON, '21, and her husband, James C. Jacobson, Harvard, '21, have sold to the National Broadcasting Company, a radio serial for children, "Drake's Drum." The program has Francis Drake's voyage around the world as its background, with a boy of twelve, a page to Drake, as the hero. This series has been prepared in an effort to improve the caliber of children's programs on the radio and may be heard over WEA, Thursdays at 4:30. Mrs. Jacobson is very anxious to learn the reactions to this program of fellow alumnae and their young.

. . . that ALICE KOHN POLLITZER, '93, is the executive secretary of the Walden School, a position she has held for the past nine years. The MONTHLY erroneously reported Mrs. Pollitzer as head of the school. We regret our misunderstanding.

. . . that our GERTRUDE STEIN, '08, although she has written articles in her own field of Vocational Service, is not the author of the "Autobiography of Alice B. Toklas." We regret our mistake.

COMMENT

THE MONTHLY is glad to devote so much of this October issue to the story of the success of the Alumnae Fund Committee. Our one regret is that it has necessitated holding out several of our regular departments and omitting entirely any class notes. Our desk is piled high with the accumulation of the summer which we will publish as promptly as space permits. We plan to print the personals of the earlier classes in November, so all who can supply us with news of alumnae through 1920, should send it to the Alumnae Office in Barnard Hall, at once.

• • •

IN our struggle for life, we have found a committee to assist Mrs. Mossman with her advertising problem. Margery Meyers Levy, '27,

Mary Bamberger, '29, and Frances Holtzberg Landersberg, '29, are prepared to render yeoman service in our cause. Any suggestions will be welcomed by Mrs. Mossman and her committee who are trying to make it possible for you to continue to receive this book.

FROM THE DEAN'S OFFICE

We regret that serious illness makes it necessary for Dr. Grace Potter Rice, Assistant Professor of Chemistry, to be absent on leave for this year.

New members of the staff include four Barnard alumnae. Dr. Helen R. Downes, '14, has been appointed Lecturer in Chemistry, Miss Frances V. Markey, '31, Lecturer in Psychology, and Miss Helen M. Phelps, '33, Lecturer in French. Miss Margaret E. Forde, '32, is succeeding Mrs. Nancy Thomas Cort, '29, resigned, as Assistant in Geology. In the Department of Music, Mr. William Mitchell has been appointed Lecturer, Mrs. Dagmar Rybner-Barclay, Teacher of Singing, Mr. Frank Sheridan, Teacher of Piano, and Miss Alta Hill, Assistant Teacher of Piano. Mr. John P. Foley, A.M. Columbia, has been named Lecturer in Psychology, and will have charge of some of the courses usually given by Dr. Georgiana S. Gates, '17, who is on leave of absence for the current year. Mme. Jeanne Vidon-Varney, D. Univ. Paris, has been appointed Lecturer in French, and will give courses in phonetics. In the Department of Zoology there are three newly appointed Assistants: Miss Elizabeth Drumtra, A.M. Columbia, Miss Arlene C. Johnson, A.M. Oberlin, and Miss Floretta A. Jackson, A.M. Columbia.

The number of students in Barnard is about 32 less than a year ago. Our residence halls, however,

are 88.5% filled, showing an increase of 3.5% over the figures at this time last year.

Dean Gildersleeve has been invited to give an address on "Present Perils for the Education of Women" at the Third Women's Conference sponsored by the *New York Herald Tribune*, to be held at the Waldorf-Astoria on October 12th and 13th.

On October 17th, Dean Gildersleeve will speak to the members of the Readers' Club of The Riverside Church on her summer observations in Europe.

"New Trends in the Colleges" is the title of the Dean's address to be delivered to the members of the College Women's Club of Montclair at a luncheon meeting on October 28th.

At the dinner to be given in honor of the heads of the Seven Colleges by the Alumnae Committee of St. Louis on November 2nd, Dean Gildersleeve will be among the speakers. She will make a short address at the luncheon to be given the following day by the Chamber of Commerce of St. Louis in honor of the same group.

From St. Louis the Dean will journey to Milwaukee, where she will deliver an address entitled "Teachers Face a New World" to the members of the Wisconsin Teachers Association assembled at their annual convention.

"Leadership" is the title of her address to be delivered to the Alliance Branch of All Souls Church on November 8th.

On November 17th the Dean will go to Worcester, Massachusetts, where she will address the members of the College Club.

The Dean has been invited to act as toastmistress at the Seventh Friendship Dinner, to be given on November 24th at the Hotel Roosevelt. On this occasion the Award of the Medal for Eminent Attainment, given annually by the American Woman's Association, will be made.

MABEL SMITH DOUGLASS, '99

IN THE tragic accident which cost the life of Mabel Smith Douglass, Barnard, '99, the College lost one of its most distinguished graduates. Vision, courage, a clear head, the power of persuasion—these enabled her to do a remarkable piece of creative work in building New Jersey College for Women. As the gallant leader in the vigorous campaign of the women's organizations of that state to secure a women's college, she roused public opinion, persuaded legislators, and convinced the Rutgers Trustees of the desirability of an affiliated college on the Columbia-Barnard plan. Then, as Dean of the infant college, she built a strong foundation. I visited her at the end of the first year, when the institution was camping out in a large private house. I spoke at her tenth anniversary celebration, in a splendid hall, to a college of a thousand students, with many fine buildings, a beautiful campus, and assets amounting to over five million dollars. As leader in this great enterprise, she did an admirable piece of work, and brought honor to her own *alma mater*. Her Barnard comrades here pay tribute to her memory.

Virginia Crocheron Gildersleeve, '99

— PROJECTIONS —

ALICE DRAPER CARTER

Interviewed by Clare M. Howard

EVERYONE remembers, when Election Time comes round, the indispensable folder which the National League of Women Voters circulates, setting forth impartially the past action of candidates for election, on labor bills, education, public health measures and other civic improvements; but not many of us know that Mrs. Edward Clark Carter, the New York State Chairman of the New York League, is a graduate of Barnard College. Alice Draper, 1905, so soon after her marriage went to India, and hence to England, that she is not often seen at Barnard reunions. She continued in India the serious interests she was known for at college,—no one ever made a more beautiful President of the Young Women's Christian Association—and served on the National Christian Association of India, Burma, and Ceylon. When the World War broke out, she served on the World Committee of the Y. W. C. A. and remained in England during the war, directing at the George Washington and Eagle huts. Though she has lived in New York since, and become a leading spirit in the New York League of Women Voters, she is off again in December to accompany her husband to Honolulu, Japan, and China. He is Secretary General for the Institute of Pacific Relations.

Sister of Ruth Draper

It must not be imagined from all this that she is a mere Chairman, one of those "Prominent Women" who are the early flowers of the emancipation of our sex. Even as a girl she took her responsibilities as a matter of course, as the member of a family long accustomed to lead. She was distinguished without effort.

She had a great sense of fun, too. Perhaps if I say she is the sister of Ruth Draper, the famous writer and performer of monologues, you can guess better at her personality. She resembles her sister, though she now bears marks of a deep, recent sorrow, the loss of a son, aged twenty-two, through concussion of the brain received in football just as he was about to be graduated from Harvard.

Though his twin brother remains to her, and another girl and boy, this vividly friendly one—I saw a portrait of him—was possibly the nearest to her in tastes and talents.

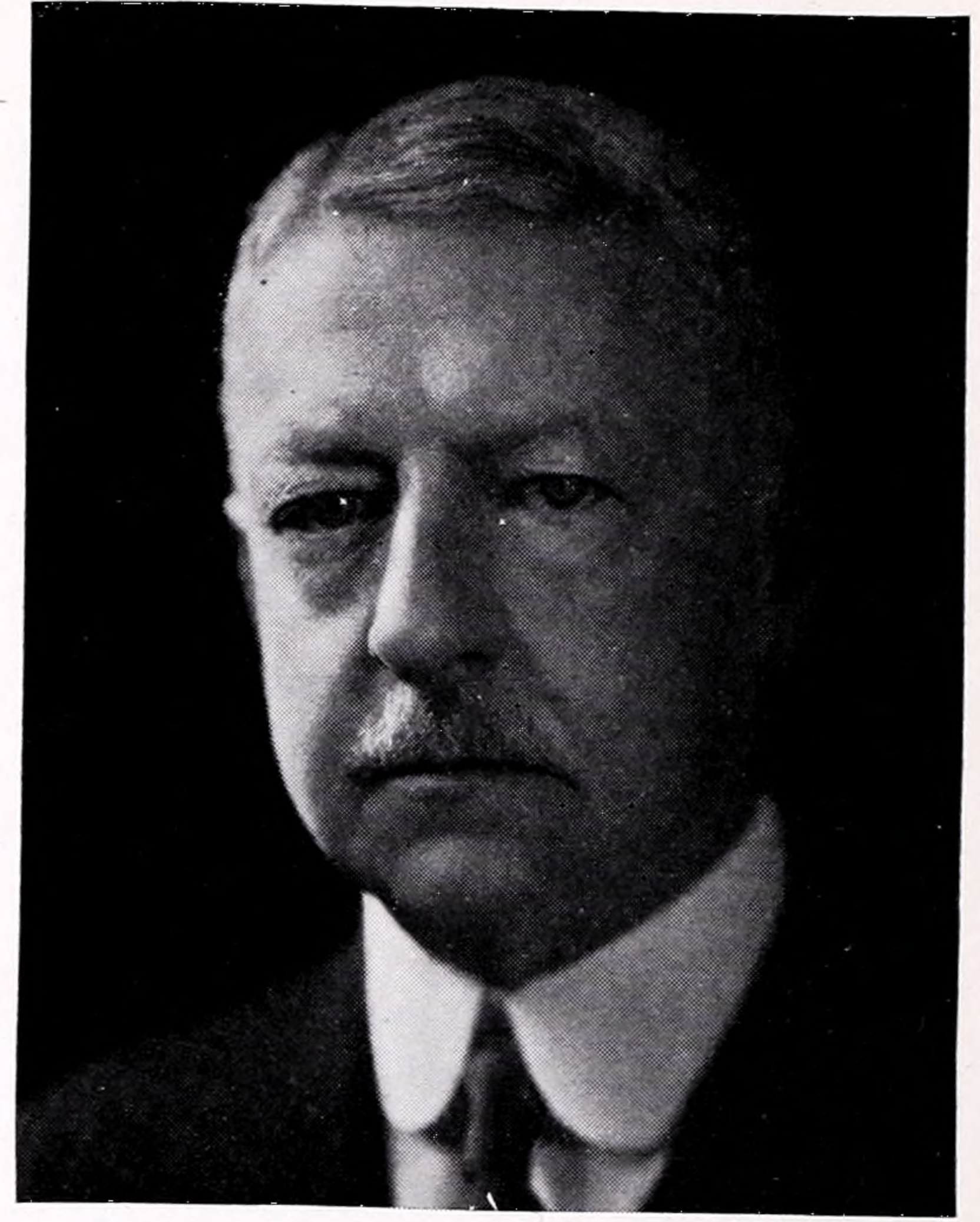
She told me of this bereavement without bitterness, but I was so plunged into sorrowful reflections on university education that it was difficult to pull myself out to ask questions about the League of Women Voters.

Non-Partisan Champion of Good Government

I had no trouble in getting her to declare her preference among the candidates for Mayor of New York, but she declines to have it published, since the League, as is well known, is non-partisan. It irritates some people by this attitude, but it maintains that it serves the public best by keeping it informed, and well-informed, about the record of the candidates, and what they have done in the past for efficient government. Just now the members are studying the problem of taxation. The county, they consider, is the best area as a unit of government,—not the village nor the city. Westchester County, with its schools, hospitals, and health center, is a model in this respect. If only the sixty counties of New York State could be governed as is Westchester—.

Meanwhile, in the coming election, if you want information uncolored by self-interest, go to the office of the League at 155 East 44th Street, and there, too, you will find a Barnard Alumna.

WITH profound regret the administration announces the death on September 12th of Mademoiselle Hélène Biéler. Miss Biéler had been teaching in our French Department for fourteen years, and was a conscientious and competent instructor, who had won the warm regard and respect of her colleagues and students. The loss of Miss Biéler, in addition to the resignation of Professor Prenez, will mean a considerable change in our French Department this year.



FUND PERSONALITIES

Dean Gildersleeve, in the lower right hand corner, needs no introduction; nor does Mrs. Lowther, Fund Chairman, right. Mr. James R. Sheffield, upper right, is Chairman of Barnard's Board of Trustees. Beside him is Mrs. Harold B. Storms (Gene Pertak, '25), this year executive secretary of the Fund. Lower left is Mrs. William Prescott White (Marian H. Churchill, '29), secretary last Spring.



A L U M N A E F U N D

The Trustees' Thanks

DEAR MRS. LOWTHER: I have just learned with gratitude and astonishment that your Alumnae Fund Committee has raised about \$15,000. It indicates the loyalty of the alumnae and their faith in the future of Barnard College. Under the brilliant leadership of Dean Gildersleeve, your College has done and is doing a great work, not only for the higher education of women, but for the cultural life of this country.

I wish you success in the splendid work you are doing. It is deeply appreciated by all who are privileged to have some part in its notable service.

Very faithfully yours,

JAMES R. SHEFFIELD

Chairman, Board of Trustees.

RETROSPECT

The Chairman's Report

PERHAPS no group of alumnae ever undertook a more dubious task than that of launching an Alumnae Fund in the year 1933. Once again, however, the Barnard alumnae have achieved the seemingly impossible.

Two years ago, at the suggestion of Beatrice Lowndes Earle, a committee was appointed to put into operation an Alumnae Fund designed to create a means by which each alumna, by an annual contribution, might give tangible evidence of her loyalty to Barnard and her belief in its future.

It was at first decided not to ask for funds until a more favorable time. The pressing need of Barnard students, however, precipitated immediate action, and the devotion of Barnard alumnae was demonstrated anew when, in four short months, they were able to present the College with \$15,000, representing the contributions of 760 individual and thirteen class donations.

It is not possible to estimate exactly how many participated in the class gifts, as all the lists are not available. We know, however, that the grand total of those who gave to Barnard this year is more than 1,200.

Nor is this all. Some few classes, in addition to contributing to the present needs of the college, are meeting payments on insurance premiums or other pledges to the future enrichment of the College. Many more alumnae, had they been able to follow their inclinations, would have contributed to the cause, as the numerous letters in the files testify.

The success of our first year's effort is a tribute to the inspired leadership of Dean Gildersleeve. May we continue to show appreciation of that leadership by ever more generous effort.

This report would be incomplete without expressions of warm gratitude to Marian Churchill, our first executive secretary, whose charm and genius for organization made the work of the committees a pleasant adventure.

We gratefully acknowledge our debt to Gertrude Ressmeyer, who so cheerfully assumed the added responsibilities and tasks involved in the new work.

The encouragement of our splendid president, Helen Erskine, and the enthusiastic coöperation of the forty-seven Class Representatives have been so heartening that I am moved to thank the Board of Directors of the Association for making possible the rich privilege of serving as the Chairman of the new Alumnae Fund Committee of Barnard College.

FLORENCE DE L. LOWTHER.

PROSPECT

The Dean's Viewpoint

DURING a year full of perplexing financial difficulties, no other single thing gave as much encouragement and confidence to the College as the astonishingly successful beginning of the Alumnae Fund Campaign. Even more valuable than the actual dollars that arrived in such unexpectedly large numbers, was the consciousness that so many alumnae regarded themselves as responsible members of the Barnard family, believed in the College, and wanted to help it through the crisis. *Spirit* counts enormously in these days, I find, and thus I regard the cheer and confidence it produced as the most valuable result of the first season of the Alumnae Fund.

With regard to the actual dollars that have

flowed in, most of which, as is stated in the official report, were "undesignated," I intend to recommend to the Trustees that these unrestricted gifts be used this year for Student Loans, administered by the Alumnae Committee. This need remains probably the most acute. As savings become exhausted and funds tucked away for educational expenses have to be used for illness or for food for the family, more and more of our students are in need of assistance.

We have already awarded for the current year \$58,487 in scholarships and grants-in-aid to 263 individuals, in comparison with \$45,713 to 181 at the same time last year. The Student Loan Committee has already promised \$13,370 to 51 individuals, as compared with \$10,361 to 55 last year.

Moreover, these figures do not signify that by any means all those in need of assistance have been helped. Some we could not aid at all; to others we could not give all they needed; and thus many worthy students have been obliged to withdraw, in spite of all our efforts. In a great many cases this was due to the fact that they had not only to provide their own expenses but also to help their families, and they were forced to seek outside employment, or, failing this, at least to work in the home.

We have, however, been able to assist a large number,—partly with the income from our old scholarship endowment funds, largely with money drawn from the general income of the College, and now with this splendid gift from the alumnae. The following letter received from a member of the present senior class seems to me to show strikingly what this money has enabled us to achieve.

"I want to tell you how grateful I am for what Barnard has done for me in granting me scholarships and loans which have covered a large part of my tuition through college. These have in fact made it possible for me to continue in school.

"Aside from the pleasure I have had in my work in Barnard I feel profoundly moved at the spirit of the Administration in helping the students through these difficult times. I shall always have a deep affection and respect for the policy of the college.

"I hope that I shall some day be able to justify the confidence in me which Barnard has expressed in extending me these aids and that I can repay many times the amount advanced me."

As long as this crisis continues I trust that the alumnae will feel that it is worth while to help students like this receive a college education, and to aid us to develop in the College this fine spirit which her words so touchingly express.

VIRGINIA C. GILDERSLEEVE.

SIDELIGHTS

THEY have told you how the Fund was collected, how much came in, and how it is going to be used. But have they told you what Edwin C. Hill would call "the human side of the Fund"? In case you hadn't heard:

Did you know that from the first day the campaign started, last February 13th, until the books were officially closed, June 13th, envelopes came in every day, all containing money? Over \$265 was received February 28th. That was the high mark. May 4th closely rivaled it with \$261. And the \$5 received April 6th was the low mark.

• • •

Of course you know 1909 started the ball rolling by presenting \$1,000, a portion of its twenty-fifth anniversary gift, a year ahead of time so it could be used when most needed. Did you know that 1924 also advanced \$1,000 of its gift fund? And that four other classes did not wait for anniversaries? The class of 1910 gave \$575 of its fund; 1917 advanced \$450; 1912 sent in \$55, and 1930 contributed \$250. All of these gifts were in addition to individual donations by members of these classes.

• • •

Anniversary classes also contributed generously. In addition to their individual gifts amounting to \$262, 1908, the twenty-fifth anniversary class, presented to the College a building and loan stock valued at \$2,000. As a ten-year gift, 1923 sent \$1,150 to the Fund, while individual contributions added \$244.

• • •

You probably would have enjoyed the job held by Marian Churchill, last year's executive secretary. For it made one realize how much pleasure people got from giving to Barnard. Alumnae who had been dunned repeatedly for class gift contributions suddenly needed no urging. Persons who had not been heard from in years walked in with open pocketbooks, or wrote, or telegraphed from almost every State in the Union and from such faraway places as England and China.

• • •

Other reunion classes started the custom of giving money on anniversaries never before celebrated by gifts. Of these classes, 1903 is the banner class. Its representative, Mrs. Walter Morse, and her associates collected in one year \$557.50 and added \$40 from the class treasury for a thirtieth anniversary gift. The forty-year class, 1893, secured a contribution of \$40 from six of its seven

living members, and missed 100% only because the seventh member could not be reached. In addition, Mrs. Sigmund Pollitzer presented a handsome and valuable book to the Dean for the College library. Out thirty-five years, 1898 gave \$62. The twenty-year class, 1913, advanced \$200 from its twenty-fifth anniversary gift fund, in addition to \$153 contributed by individuals. Marking its fifteenth anniversary, 1918 sent \$37 from its treasury and secured individual donations totaling \$272. And 1928 celebrated its fifth anniversary by turning over \$915 of its ten-year gift fund, as well as \$186 in individual contributions.

• • •

Speaking of writing, have you seen the letters which accompanied the Fund gifts? "I have been eager for a long time," wrote one alumna, "to have at least a little share in giving some girl part of the joy that came to me in life at Barnard, not to speak of all it has meant since." . . . "This," wrote another, "is part of the third prize award of the Fellowship Essay Contest held by the American Association of University Women." . . . "Had not the last paragraph of Dean Gildersleeve's letter encouraged me," explained a third alumna, "I should have felt my contribution was too small to send at all."

• • •

For those of you with short memories, the last paragraph of the Dean's letter read: "In these hard times few persons can make large gifts; but if each of us gives even a little, the result—from 5,000 of us—will be a tremendous help." If any of you felt embarrassed to send contributions, because they were necessarily small, may the committee remind you that the 119 contributors who could spare only one dollar also helped to swell the total?

• • •

In addition to class and individual gifts, there were other sorts. The Boston Barnard College Club showed its interest by sending \$10. One alumna gave as some others of you may wish to give—in memory of her deceased classmates. And did you know that at Commencement Reunion, Mrs. Lowther got another contribution? She reported that the Fund then totaled \$13,891.10. And then, as the lights were dimmed for the evening entertainment, a package was thrust in her hand. In it was 90¢ from, so the note said, "a little group in the back of the room," who wanted to make the figures come out even.

• • •

If crowds of you had not flocked to Helen Rogers Reid's house, last April 26th, the Fund would have been \$459 smaller. That was the sum realized that day from the sale of tickets and autographed copies of Alice Duer Miller's narrative

poem, *Forsaking All Others*, which Mrs. Miller read to a rapt audience.

• • •

When you ordered books from Eloise Hctor's Wall Street Bookshop, you were also helping the Fund. To it Miss Hctor generously contributed 10% of the money she received on purchases by Barnard alumnae. Those of you who have not yet patronized Miss Hctor's bookshop should start doing so. She has a daily city delivery service; you can count on her getting your order (which you forgot to place until the last moment) to your great aunt sailing on the Europa, and you can telephone your orders. Moreover, you'll be helping the Fund, for Miss Hctor is continuing her plan of giving the fund a percentage on Barnard alumnae purchases.

• • •

Have you seen the map on the inside back cover? That's another way you can help the Fund indirectly, if it goes easier with you. It comes in grand colors, size, about 21" x 28", unframed \$1.00, framed \$2.50. Your offspring will like to hunt on it for whales and buffaloes; your guests will admire it in colonial rooms. A sample is hanging in the Alumnae Office, where you can give your orders (or mail them) to Mrs. Harold B. Storms, executive secretary, Alumnae Fund. The profits are divided equally between the Alumnae Fund and the Virginia C. Gildersleeve scholarship fund being raised by the New York branch of the American Association of University Women.

• • •

Did you know that the Alumnae Fund was of benefit to the Alumnae? When the Fund Committee descended en masse on the Alumnae Office, they left little space for Gertrude Ressmeyer, the Alumnae Secretary, and no space for those itinerant graduates who liked to drop in her office for a chat. So the Alumnae Room was transformed into a busy office for both regular and Fund business. And the nice, squashy chairs and sofa were moved into the Little Parlor which the College now generously allows the alumnae to use as their parlor. It's already been put into active use by many alumnae committees, and between times, graduates find it a nice place to rest their aging bones.

• • •

Have you wondered about the anonymous persons responsible for those fetching cartoons sent out in last Spring's drive. Well, now it can be told that Marian Mansfield Mossman and Ruth von Roeschlaub were guilty of the ideas, and Marian Churchill executed the works of art.

• • •

Speaking of Marian Churchill, last Spring we called your attention to the diamond on the signi-

ficant finger of her left hand. She's now wearing two rings on that significant finger, meaning that she's been Mrs. William Prescott White since September 9th. And because she's very busy getting dust out of corners and cooking green peas, in between the times when she teaches history at the Calhoun School, the Fund has a new secretary.

• • •

That lady, who tears her yellow hair as she adds up impressive lists of figures, is Mrs. Harold B. Storms who was Gene Pertak when she was helping to run the Class of 1925. She also used to be leading man in Junior Show and Wigs and Cues plays and managed generally to impress both her

elders and youngers with her efficiency. You'll still be impressed, if you drop in at the Alumnae Office any afternoon between one and six and watch her add your contribution to the Fund with lightning speed, all the while joining you in a few tears over the good old days.

• • •

For the convenience of those of you who may wish to remember Barnard in your wills, the following form may be useful:

I give and bequeath to Barnard College, through the Alumnae Fund, the sum of \$....., for the endowment of Barnard College.

Alumnae Fund of Barnard College

Committee for the Spring of 1933

Central Committee

Mrs. Florence de L. Lowther, 1912, *Chairman*

Mrs. Frank Altschul, 1907
Mrs. Philip B. Holmes, 1924

Mrs. Frederic F. Van de Water, 1909
Mrs. Alexander Mossman, 1926
Miss Ruth von Roeschlaub, 1929

Miss Frances K. Marlatt, 1921
Miss Janet Valborg Owen, 1927

Miss Marian Heritage Churchill, 1929, *Executive Secretary of the Alumnae Fund*

Ex-Officio Officers of the Associate Alumnae

Miss Helen Erskine, 1904
President

Miss Lillian M. Wardell, 1907
Treasurer

Miss Gertrude H. Ressmeyer, 1920
Executive Secretary

Advisory

Representatives of Barnard College

Miss Virginia C. Gildersleeve, *Dean*

Mrs. Henry Wise Miller
Trustee

Miss Emily Lambert
Bursar

Mrs. Giles Rich
Assistant to the Dean—Outside Contacts

Mrs. George Endicott
Representative on the Committee of the Seven Colleges

Class Representatives

1893—Miss Mary Stuart Pullman
1894—Miss Eliza Jones
1895—Miss Mabel Parsons
1896—Mrs. William R. Arnold
1897—Mrs. Edwin Van Riper
1898—Miss Anna E. H. Meyer
1899—Miss Grace Goodale
1900—Miss Theodora Baldwin
1901—Mrs. Alfred Compton
1902—Mrs. Huntington Clark
1903—Mrs. Walter L. Morse
1904—Miss Florence L. Beeckman
1905—Miss Marguerita Smith
1906—Mrs. Stanley M. Isaacs
1907—Mrs. Jerome Tanenbaum
1908—Mrs. William L. Duffy

1909—Mrs. Charles C. Black
1910—Miss Virginia May Mollenhauer
1911—Mrs. Arthur A. Zucker
1912—Miss Anna Hallock
Mrs. Florence de L. Lowther
1913—Mrs. Sydney Lewinson
1914—Miss Lucie A. Petri
1915—Mrs. Pierre Banker
1916—Miss Marjorie Hulskamp
1917—Mrs. John Bateman
Miss Sabina Rogers
1918—Mrs. Otto Albert Friend
1919—Miss Dorothy Brockway
1920—Miss Granville Meixell
1921—Mrs. William Lovat Fraser
Miss Frances K. Marlatt

1922—Miss Madeleine Metcalf
1923—Miss Mildred Black
1924—Mrs. Gustavus C. Darlington
1925—Mrs. Philip Morrison
1926—Miss Bryna Mason
Miss Anne Torpy
1927—Mrs. Milton Levy
1928—Miss Ruth Richards
1929—Miss Mary Bamberger
Miss Marian Heritage Churchill
1930—Mrs. Samuel Shaw
1931—Miss Ruth Abelson
Miss Sally Vredenburg
1932—Mrs. Robert W. Herr
Mrs. Jerome Nathanson

Contributors to the Alumnae Fund for the Spring of 1933

Class of 1893 Total \$42.00 Contributors—6

Jessica Garretson Cosgrave	Louise Stabler Parker
Laura Levy Jackson	Alice Kohn Pollitzer
Grace Farrant Luby	Mary Pullman

Class of 1894 Total \$10.00 Contributors—1
Eliza Jones

Class of 1895 Total \$145.00 Contributors—5

Gratia Whithed Baldwin	Mabel Parsons
Antonie Junge	Florence Colgate Speranza
	Caroline Brombacher Stacey

Class of 1896 Total \$105.00 Contributors—8

Ada Hart Arnold	Bertha Van Riper Overbury
Clara Meltzer Auer	Elsie Clews Parsons
Carrie Hammerslough Hymes	Clementine Tucker Ruddell
Anna Mellick	Jessie Wendover

Class of 1897 Total \$78.00 Contributors—8

Adelaide Brown	Louise Shaw Richards
Estelle Elkus Galston	Adaline Wheelock Spalding
Anna Locke	Aline Stratford
Mary More	Maude Wilcox Van Riper

Class of 1898 Total \$62.00 Contributors—4

Anna Meyer	Susan Myers
Helen St. Clair Mullan	Elizabeth Wyman

Class of 1899 Total \$321.00 Contributors—13

Amelia Wohlfarth Buck	Alté Stilwell Kervan
Agnes Dickson	Elsie Kupfer
Virginia Gildersleeve	Adelaide Hoffman Marvin
Grace Goodale	Alice Duer Miller
Ida Demarest Keller	Edith Striker
	In memory of Mary Morrell Brackett
	“ “ “ Martha Arnstein Brenner
	“ “ “ Ella Seligsberg Dreyfoos

Class of 1900 Total \$219.50 Contributors—14

Theodora Baldwin	Sara Straus Hess
Willina Barrick	Eleanor Keller
Agnes Bennett	Virginia Newcomb
Margaret Blossom	Mary Woodhull Overton
Valentine Chandor	Katharine Van Horne
Ellinor Reiley Endicott	Julia Watkins
Susan Germann	Mary Goldsborough West

Class of 1901 Total \$257.01 Contributors—28

Margaret Buffington	Clara Hudson
Armstrong	Adele Johnson
Elizabeth Hamilton Best	Sissie Straus Lehman
Marguerite Upton Brehaut	Alma Wallach Liebmann
Bertha Brown	Mabel Elting McLaury
Eliza Butler	Mary Morrison
Alice Beer Carns	M. L. Wehncke Noeggerath
Elizabeth Roberts Compton	Olive Barrick Rowland
Isabelle Cooper	Helen Catlin Russell
Pauline Dederer	Meta Pollak Sachs
Christine McKim Gillespie	Sarah Schuyler
Beth Cutting Gillette	Mary Fisher Torrance
Lenda Hanks	May Wendell
Hilda Josephthal Hellman	Cordelia Wendt
	Madelene Heroy Woodward

Class of 1902 Total \$97.00 Contributors—10

Mary Hall Bates	Susan La Monte
Eleanor Phelps Clark	Janet Seibert McCastline
Elizabeth Finnegan Fain	Ada Clouse Neiswender

Marguerite Elliman Henry
Harriet Burton Laidlaw

Class of 1903 Total \$577.50 Contributors—32
Class Gift \$40.00

Jessie Addoms	Laura Van Cise Miller
Gulielma Alsop	Mary Harrison Morse
Helen King Blakely	Elsa Herzfeld Naumberg
Anita Cahn Block	May Johnson Newton
Mary Moen Brown	Katherine Poole
Helen Cohen	Helen Rogers Reid
Anna Ware Collins	Florence Cheeseman Remer
Mary Colt	Ethel Pool Rice
Harriet Daniels	Marion Latham Richards
Mary Groff	Edna Fry Richardson
Gertrude Clark Hitchcock	Laura Sequine
Lucile Kohn	Lucy Sherman
Elsbeth Kroeber	Helen Tanzer
Ida Hope Mackenzie	Elizabeth Thompson
Jean Miller	Maisie Shainwald Whyte

Adele Lewisohn Lehman (ex-1903)
Mildred Straus Schafer (ex-1903)

Class of 1904 Total \$109.00 Contributors—14

Jean Wick Abdullah	Dora Lichten Falk
Jessie Adams	Jean Loomis Frame
Caroline Lexow Babcock	Florence Hubbard
Florence Beeckman	Lena Miller Krepps
S. Theodora Curtis	Emma Enright Neilson
Katharine Doty	Jeannette Stobo Pensel
Helen Erskine	Clara Applegate Thomas

Class of 1905 Total \$132.00 Contributors—17

Abigail Talbot Adams	Edwina Levy Hayman
Ruth Reeder Arbuckle	Ethel Hendricks
Georgina Bennett	Lily Murray Jones
Alice Rheinsteim Bernheim	Abby Leland
Fannibelle Leland Brown	Pamela Lyall
Mary Calhoun	Clarissa Harben Macavoy
Katharine Francis Goodyear	Marguerite Smith
Edith Handy	Mildred Farmer Stahl
	Blanche Reitlinger Wolff

Class of 1906 Total \$44.00 Contributors—8

Dorothy Brewster	Edith Somborn Isaacs
Mabel Browne	Josephine Paddock
Virginia Ralph Davis	Lucy Mayo-Smith Phillips
Augusta Salik Dublin	Elizabeth Post

Class of 1907 Total \$201.00 Contributors—24

Charlotte Oesterlein Abraham	Lucetta Johnson
Amalie Althaus	Elsa Du Bois McKee
Helen Goodhart Altschul	Agnes Ernst Meyer
Margaret Bailey Barbour	Louise Odencrantz
Beatrice Bernkopf	Mary Reardon
Josephine Brand	Grace Bernheimer
Katherine Rapp Brown	Shellenburg
Florence Gordon	Helen Shoninger Tanenbaum
Irma Jellenik Green	Evangeline Cole Wehncke
Alma Joachimson Greenwald	Sophia Woodman
Jean Disbrow Hadley	Anne Young
Hazel Henderson	

Beatrice Herzfeld Reichenbach (ex-1907)
Alma Hays Stern (ex-1907)

Class of 1908 Total \$262.00 Contributors—23

Class gift \$2,000.00	See below
Clairette Armstrong	Helmina Jeidell
Marguerite Newland Barron	Helen Loeb Kaufman

Mary Budds
Regina Coveney
Marion Crowell
Elizabeth Fox DeCou
Eleanor Hunsdon Grady
Ada Muller Griesmaier
Elsie Helmrich
Jeannette Kaufman
Herkimer
Pauline Steinberg Hirschfeld

Adelaide Requa Lake
Louise Traitel Loeb
Gertrude Wells Marburg
M. Agnes Miller
Elsie Quinby
M. Gladys Quinby
Florence Sammet Rothschild
Gertrude Stein
Hilda Welles Stidfole
Olive Roe Wallstein

Class of 1909 **Total \$228.00** **Contributors—39**
Class gift \$1,000.00 **See below**

Beatrice Leerburger Bauman	Lois Westaway Jones
Frances Ingalls Beggs	Lois Kerr
Helen Newbold Black	Ethel Ivimey Langmuir
Emma Bugbee	Myra McLean
Gladys Arkenburgh Chandler	Josephine O'Brien
Julia Goldberg Crone	Hortense Murch Owen
Mary Demarest	Mary Swenson Palmer
Jessie Levy Feist	Adelaide Richardson
Helen Phillips Frank	Esther Hellin Sackman
Mary Godley	Dean Smith Schloss
Blanche Samek Gutlohn	Edith Seguine
Eva vom Baur Hansl	Edna Phillips Stern
Elinor Hastings	Lucy Thompson
Cecile De Bouy Herrick	Laura Turnbull
Ethel Nyitray Herrmann	Eleanor Gay Van de Water
Ethel Hodsdon	G. Anna Ver Planck
Hannah Falk Hofheimer	Ethel Weston Welch
Jennie Markoe Jacobus	Jennie Wylie
Alice Jaggard	Helene Boas Yampolsky
Dorothy Calman Wallerstein (ex-1909)	

Class of 1910 **Total \$51.00** **Contributors—12**
Class gift \$575.00 **See below**

M. Harriet Bishop	Adelaide Loehrsen
Edna Fancher Darling	Rosanna Moses
Lilian Egleston	Elizabeth Rawcliffe
Elizabeth Dunner Eldredge	Margaret Renton
Gertrude Hunter Howard	Clarice Auerbach Rosenthal
Frances Burger Kopp	Hazel Wayt

Class of 1911 **Total \$336.00** **Contributors—22**

Dorothy Salwen Ackerman	Madeleine Hirsh Ottenberg
Mary Shaw Bowman	Helen Porter
Therese Cassel	Gertrude Saul
Susan Minor Chambers	Lillian Schoedler

Evelyn Dewey
Georgianna Sanford Gilman
Stella Bloch Hanau
Florrie Holzwasser
Ida Beck Karlin
Irma Heiden Kaufman
Adele Duncan McKeown

Louise Ockers
Myrtle Shwitzer
Rose Gerstein Smolin
Margaret Hart Strong
Gladys Tallman
Marion Oberndorfer Zucker

Class of 1912 **Total \$419.00** **Contributors—41**
Class gift \$55.00

Bertha Rockwell—honorary member	Eleanor Mathews
Gertrude Borchard	Marion Wolff Meyer
Ernestine Isabel Brand	Florence Rees Moore
Bessie Bunzel	Isabel Koss Murray
Edith Valet Cook	Elizabeth Stack Murphy
Molly Coyle	Helen Plummer
Cora Thees Crawford	Marion Heilprin Pollak
Vera Rees Edell	Margaret Kutner Ritter
Alice Evans	Hester Rusk
Grace Fischer	Emma Rapelye Somerville
Irene Frear	Dorothy Spear
Anna Hallock	Isabelle Morrison Stevens
Eleanor Myers Jewett	Louise Nyitray Trueblood
Elizabeth Jones	Catherine Walther
Frieda Jud	Martha Emmons Weihman
Irene Keenan	Elsa Wunderlich
Shirley Gleason Kirchberger	Hilda Boegehold (ex-1912)
Lucile Mordecai Lehair	Rowena Hendricks (ex-1912)
Florence de Loisselle Lowther	Mary Stine (ex-1912)
Lilian MacDonald	Mary Wegener (ex-1912)
Irene Dagleish McCanliss	

Class of 1913 **Total \$153.00** **Contributors—14**
Class gift \$200.00

Mariette Gless Barkhorn	Sallie Pero Mead
Mary Stewart Colley	Lucy Powell
Helen Crosby	Viola Turck Ryder
Alberta Edell	Eleanor Oerzen Sperry
Edith Halfpenny	Hazel Martin Spicer
Joan Sperling Lewinson	Varian White
Lillian Waring McElvare	Naomi Harris Wolfson

Class of 1914 **Total \$185.00** **Contributors—26**

Edith Mulhall Achilles	Mary Mann
Mary Kenny Allen	Irene Track Marran
Anonymous	Sidney Miner
Bertha Badanes	Gladys Bateman Mitchell
Winifred Boegehold	E. Adelaide Owens Nieland

IF YOU HAVE
Building and Loan Shares
or
Cooperative Bank Shares
or
Life Insurance Endowment
MATURING OR ABOUT TO MATURE

YOU MAY WISH TO HAVE

\$25.00 \$50.00 \$75.00 or \$100.00

MONTHLY INCOME either at once or in
six, eight or ten years.

In Any Case, (even in absence of such maturing PLANS)

We can be of particular **SERVICE** to you in

ANTICIPATING FUTURE INCOME NEEDS

THE WOMAN'S BUREAU

An Agency for ALL KINDS of Insurance in ANY of the Leading Companies.

LEXington **12 East 41st Street**
2-3156 **New York**

Name	INCOME TO BEGIN AT AGE
Address	45 50 55 or at other ages
Birth Date	61 65 67
Telephone	DESIRED INCOME
	\$25.00 \$50.00 \$75.00 \$100.00
	Please mark preference

Alice Clingen
 Florence Palmer Edgell
 Ruth Marley Gayley
 Ruth Guernsey
 Edith Davis Haldimand
 Esther Hawes
 Rita Hilborn Hopf
 Elizabeth Macauley
 Agnes MacLean

Lucie Petri
 Elisabeth Schmidt
 Marguerite Engler
 Schwarzman
 Iphigene Ochs Sulzberger
 Dorothy Herod Whelan
 Luisa Ros White
 Cecile Seligman Lehman
 (ex-1914)

Class of 1915 Total \$131.00 Contributors—36

Kathryn Ashbrook
 Edith Stiles Banker
 Anna Paddock Barton
 Linnéa Bauhan
 Fredericka Belknap
 Lois Martin Blagdon
 Dorothy Dean Boorman
 Marion Borden
 Agnes Conklin
 Rhoda Erskine
 Ruth Evans
 Thora Fernstrom
 Ruth Graae
 Edith Hardwick
 Dorothy Stanbrough Hillas
 Marjorie Hillas
 Dorothy Skinker Hooker
 Virginia Pulleyn Kingsley

Fannie Rees Kuh
 Ann Kuttner
 Emma Kelley Locke
 Helen Murphy
 Elsie Oerzen
 Alma Herzfeld Oppenheimer
 Olga Mary Perlzweig
 Margaret Pollitzer
 Alice Cranch Pugh
 Viola Stokes
 Lillian Jackson Sullenbarger
 Dorothy Krier Thelander
 Elise Tobin
 Isabel Totten
 Helen Blumenthal Valentine
 Helen Lachman Valentine
 Katherine Williams
 Fannie Ansorge Zamkin

Class of 1916 Total \$58.00 Contributors—13

Jeanne Jacoby Beckman
 Gertrude Dunphy
 Dorothy Hall
 Marjorie Hulskamp
 Mabel Lee
 Catherine McEntegart

Harriet Wishnief de Onis
 Dorothy Reaser Roberts
 Helen Rose Scheuer
 Emma Seipp
 Margaret Simmons
 Mary Powell Tibbetts

Gladys Barnes Totton

Class of 1917 Total \$259.00 Contributors—46

Class gift \$450.00

Gertrude Adelstein
 Ruth Jennings Anderson
 Helene Bausch Bateman
 Rhoda Benham
 Beatrice Burrows
 Anna Hermann Cole
 Dorothea Curnow
 Evelyn Davis
 Gertrude Dearden
 Beatrice Lowndes Earle
 Cora Morris Ehrenclou
 Anita Frenzel
 Georgina Stickland Gates
 Eleanor Wilkens
 Graefenecker
 Ethel Gray
 Ethel Rose Gray
 Helen Gunz
 Genevieve Hartman Hawkins
 Mary Talmage Hutchinson
 Grace Diercks Kaas
 Helen Stockbridge Kennedy
 Edith Morgan King
 Marion Streiss Knowlton
 Frances Krasnow
 Cornelia Geer Le Boutillier

Charlotte Martens Lee
 Dorothy Leet
 Margaret Lennon
 Edith Cahen Lowenfels
 Alice Luckings
 Freda Wobber Marden
 Amanda Schulte McNair
 Maude Minahan
 Gulli Lindh Muller
 Viola Teepe Norton
 Lenore Gunzendorfer
 Oppenheimer
 Eleanor Parker
 Marion La Fountain Peck
 Ruth Edmondson Reddish
 Christine Robb
 Sabina Rogers
 Irma Meyer Serphos
 Sally Bennett Voorhies
 Dorothy Bauer Walter
 Babbette Deutsch
 Yarmolinsky

* * *

Marjorie Hallett, in memory
 of Elizabeth Brooks Gray

Class of 1918 Total \$272.00 Contributors—40

Class gift \$37.00

Mary Barber
 Helen Purdy Beale

Florence Lennon
 Dorothy Oak

Elsie Oschrin Bregman
 Ruth Buvington
 A. Edmere Cabana
 Edith Mook Craig
 Gladys Cripps
 Florence Cuttrell
 Ethel Dawbarn
 Helena Shine Dohrenwend
 Esther Sutton Elliott
 Margaret Sayford Fellows
 Marie Bernholz Flynn
 Wendela Liander Friend
 Mary Welleck Garretson
 Margaret Giddings
 Esther Schiff Goldfrank
 Anna Gross
 Louise Heuterkes
 Dorothy Jacobs

Hedwig Koenig
 Louise Oberle
 Helen Grayson Rafton
 Eva Reinke
 Fannie Rubinstein
 Aline Sanborn
 Margaret Schlauch
 Edith Gross Smith
 Margaret Snyder
 Helen Stevens
 Elizabeth Stewart
 Florence Barber Swikart
 Dorothy Dirkes Turnquist
 Dorothy Graffe Van Doren
 Pauline Grossman Vorhaus
 Ruth Wachenheimer
 Marian Levy Wolff

Marion Washburn Towner (ex-1918)

Class of 1919 Total \$271.00 Contributors—31

Jeanne Ballot
 Marion Benedict
 Ruth Marshall Billikopf
 Myrrha Wesendonck Borum
 Dorothy Brockway
 Mary Campbell
 Cornelia Carey
 Marion Townsend Carver
 Leah Curtiss
 Verena Deuel
 Marion Warren Fry
 Margaret Gillespie
 Lucile Heimerdinger
 Heming
 Mildred Kammerer
 Elicia Carr Knickerbocker

Lucy Hayner Kurrelmeyer
 Marjorie Herrmann
 Lawrence
 Lucy Lee
 Lenore Guinzburg Marshall
 Ruth Jarvis Moody
 Marie Muhlfeld O'Donahue
 Elizabeth Gatewood Pietsch
 Helen Saunders
 Janet Meneely Shepard
 Helen Slocum
 Vivian Tappan
 Gertrude Miller Train
 Teresa Tusa
 Helen Baranoff Watson
 Grace Welzmilller

J. Emilie Young

Phone John 4-3280

LIFE, HEALTH AND ACCIDENT INSURANCE
 ANNUITIES, ENDOWMENTS, PENSIONS
 MARTHA ADEY SCHARF, '32

Representing
 The Johnston & Collins Co. 33 LIBERTY STREET
 General Agents
 The Travelers Insurance Company
 Hartford, Connecticut NEW YORK, N. Y.

**KEEP IN TOUCH WITH BARNARD
 WITH THE
 BARNARD BULLETIN**

Subscription \$3.50

Address L. OPPENHEIM, Barnard Bulletin

"FASHION IN BUSINESS"

A course of ten lectures by well known fashion experts planned for young women who wish to acquire a thorough knowledge of the various phases of fashion work. Course starts October 18th.

Circular sent on application

**KATHARINE GIBBS SCHOOL
 247 Park Avenue
 New York, New York**

Class of 1920	Total \$140.00	Contributors—25
Evelyn Baldwin	Josephine MacDonald	
Margaret Myers Beckhart	Laprese	
Teresa Carbonara	Ethel McLean	
Helen Clarke	Granville Meixell	
Ida Everson	Amy Raynor	
Lillian Friedman	Helen Calhoun Reik	
Tekla Landauer Gottlieb	Gertrude Ressimyer	
Marion Kaufmann	Esther Schwartz	
Haldenstein	Caroline Sexton	
Helen Hicks Healy	Dorothy Robb Sultzer	
Julie Meylan Henderson	Mary Sutton	
Veronica Jentz Hill	Marion Travis	
Louise Cox Hopkins	Marie Uhrbrock	
	Beatrice Whyte	

Class of 1921	Total \$52.00	Contributors—15
Marjorie Arnold	Laena Kahn	
Alice Cossow	Frances Marlatt	
Natalie Weiner Davison	Helen Muhlfeld	
Edna Fox	Irma Reynolds	
Florence Fineman Gunther	Lois Gurnee Sinnegan	
Mary Hall	Lucile Arkins Thompson	
Margaret Bush Hanselman	Senoca Eldredge (ex-1921)	

Class of 1922	Total \$33.50	Contributors—9
Majel Brooks	Lila North	
Eva Hutchison Dirkes	Isabel Rathbone	
Roberta Dunbacher	Pearl Wachman Sherman	
Helen Mack	Margaret Talley	
	Mildred Uhrbrook	

Class of 1923	Total \$244.00	Contributors—21
	Glass gift \$1,150.00	See below
Lylia Allen	Harriett Jones	
Mildred Black	Dorothy Scholze Krauss	
Alice Burbank	Agnes MacDonald	
Katherine Shea Condon	Gertrude Simpson Magaw	
Mary Slaughter Emerson	Anita Hughes Meyer	
Jessie Beers Galloway	Yvonne Moën	
Eloise Hctor	Helen Pattenden Rowell	
Dorothy Houghton	Estella Raphael Steiner	
Elizabeth Klein Isaacs	Ruth McIlvaine Voorhees	
Dorothy Maloney Johnson	Margaret Bowtell Wetherbee	
	Mary White	

Class of 1924	Total \$105.34	Contributors—14
	Class gift \$1,000.00	See below
Helen Miner Austin	Leila Karagheusian	
Edna Trull Bird	Barbara Kruger	
Viola Corrigan	Louise Lewis	
Elizabeth Waterman Gilboy	Ruth Losee	
Agnes Cooper Hamilton	Marjorie Bier Minton	
Nelle Weathers Holmes	Adele Alexander Parker	
H. Suzanne Jobert	Jeanne Ullman Weiskopf	

Class of 1925	Total \$192.00	Contributors—29
Elizabeth Abbott	Frances Nederburg	
Bertha Bayer	Estelle Blanc Orteig	
Pearl Bernstein	Edith Curren Owen	
Charlotte Bradley Bridgman	Thora Plitt	
Alice Demerjian	Aldona Smoluchowska Read	
Julia Goeltz	Louise Rosenblatt	
Gertrude Gottschall	Florence Kelsey Schleicher	
Helen Kammerer	Katharine Browne Stehle	
Margaret Irish Lamont	Elizabeth Stemple	
Anna Corn Levy	Gene Pertak Storms	
Katherine Lindenman	Henrietta Swope	
Naomi Lubell	Marion Mettler Warner	

Elizabeth Chamberlain	Phoebe Wilcox
McCulloch	Helen Yard
Barbara Matulka	Fern Yates

Class of 1926	Total \$43.00	**Contributors—13
Eleanor Newcomer Bratley	Bryna Mason	
Marianna Byram	Renee Fulton Mazer	
Norma Loewenstein Drabkin	Marion Mansfield Mossman	
Dorothy Frese	Marguerite Miller Olinger	
Elinor Hillyer	Celeste Comegys Peardon	
Fannie Bokstein Houtz	Edith Blumberg Raisman	
	Anne Torpy	

**This Class is paying insurance premiums, which accounts for the limited number of contributors.

Class of 1927	Total \$80.00	**Contributors—14
Ada Brentano	Sylvia Narins Levy	
Bessie Burgemeister	Clarice Philhower	
Camilla Cowan	Gertrude Braun Rich	
Annette Decker	Helen Robinson	
Maude French	Edna Metzger Rothenberger	
Marie Kohnova	Elizabeth Merk Scofield	
Henriette Krefeld	Kate Eisig Tode	

**This Class is paying insurance premiums, which accounts for the limited number of contributors.

Class of 1928	Total \$186.00	Contributors—22
	Class gift \$915.00	See below
Gabrielle Asset	Cornelia Hussey Haring	
Mildred Lopez Berea	Helen Johnson	
Elizabeth Cattelle	Margaret Ackerman Miller	
Marguerite McCloskey	Sue Osmotherly	
Coleman	Mary Wood Peck	
Kathleen Dunn	Ruth Richards	
Margaret Stanley Dykstra	Sylvia Stark	
Everita Edes	Eunice Sterling	
Lucy Hunt Edgar	Elizabeth Sussman	
Emily Morris Hadley	Harriet Tyng	
Dorothy Goetze Hamilton	Dorothy Woolf	
	Alice Wright	

Class of 1929	Total \$51.50	**Contributors—11
Evelyn Atkinson	Irene Huber	
Louise Laidlaw Backus	Kathryn Huber	
Dorothy Schaefer Genghof	Marion Schaeffer	
Elizabeth Hughes Gossett	Elise Schlosser	
May Gardner Hall	Virginia Streit	
	Marion Churchill White	

**This Class is paying insurance premiums, which accounts for the limited number of contributors.

Class of 1930	Total \$45.00	**Contributors—13
	Class gift \$250.00	
Florence Crapullo Brand	Helen Kotteman	
Katherine Brehme	Betty Linn	
Jean Crawford	Emmy-Lou Mally	
Mary Dublin	Hazel Reisman Norden	
Elizabeth Fitch	Gladys Vanderbilt Shaw	
Rebecca Kornblith	Isabel Traver	
	Cynthia Walker Herriot	

**This Class is paying insurance premiums, which accounts for the limited number of contributors.

Class of 1931	Total \$27.00	**Contributors—6
Helen Bosch	Katharine Shorey	
Catherine Lawlor	Eleanor Tibbetts	
Elizabeth Lopez	Else Zorn	

**This class is paying toward a special class gift, which accounts for the limited number of contributors.

Class of 1932 Total \$192.65 Contributors—32

Beatrice Allen	Helen Hennefrund
Catherine Amendt	Christianna Furse Herr
Elizabeth Beans	Grace Joline
Helen Block	Janet McPherson
Peggy Block	Madeleine Gilmore
Juliet Blume	Nathanson
Elizabeth Borden	Isabel Nelson
Isabel Boyd	Mathilde Otero-Felici
Alice Burnham	Evelyn Raskin
Hortense Calisher	Marguerite Reese
Elinor Cobb	Miriam Schild
Ethel Greenfield	Louise Schmid
Dorothy Gristede	Dorothy Smith
Mazie Hadfield	Frances Smith
Adaline Heffelfinger	Edith Tomkins
Ruth Henderson	Marjorie Wolff

Class of 1933 Class gift \$500.00

CLASS GIFTS

The following lists record the names of those who helped to build up class gifts presented to the Alumnae Fund in 1933. We are forced to omit the names of those who contributed to other class gifts presented this year, as those lists were not available.

THE CLASS OF 1924**Members who have contributed to the Class Gift of \$1,000.00**

Constance Auerbach	Ruth Huxtable
Helen Miner Austin	Suzanne Jobert
Louise Baker	Juliet Barker Jones
Luba Stein Benenson	Grace Kahrs
Ruth Ackerman Benenson	Edith Rose Kohlberg
Frieda Berliner	Marion Sheehan Kelly
Marjorie Bier	Barbara Kruger
Edna Trull Bird	Caroline Whitney Leslie
Elva Harsted Boxhorn	Mildred Garfunkel Levy
Mary Bradley	Elsie Lowenberg
Dorothy Fetterly Brower	Ruth Mehrer Lurie
Helen Cross Brown	Janet Martin
Selina Caldor	Olive Messenger
Marie Cerlian	Dorothy Kraus Minton
Helen LePage Chamberlain	Laura Bang Morrow
Fanny Steinschneider Clark	Olga Frankenstein Newman
Ethel Quint Collins	Ida Ostrander
Viola Corrigan	Fredda Morrell Poulsen
Elizabeth Hayward Crist	Marie Wallfield Ross
Lilyan Stokes Darlington	Florence Sanial
Florence Denholm	Nelly Jacob Schelling
Elsie Albansoder Denice	Marie Winiker Snibbe
M. Hilarion Doyle	Eleanor Korthauer Stapelfeldt
Ruth Bernston Erickson	Florence Seligmann Stark
Alice Heideman Freas	Claire Musterman Travers
Elizabeth Waterman Gilboy	Jeanne Weiskopf Ullman
May Bennett Goddard	Edith Kirk Updike
Agnes Grant	Bertha Brown VanVliet
Ruth Cushman Graydon	Hortense Veilchenblau
Eva Sherpick Green	Gertrude Marks Veit

Helen Green
Agnes Cooper Hamilton
Nelle Weathers Holmes

Adele Bazinet Vigneron
Margaretta Weed Warden
Ruth Weill

THE CLASS OF 1910**Members who have contributed to the Class Gift of \$575.00**

Laura Stryker Alexander	Mary Jaques
Harriet Bishop	Elsie Plaut Kahn
Dorothy Kirchwey Brown	Frances Burger Kopp
Olive Thompson Cowell	Adelaide Loehrsen
Clarita Crosby	Christella MacMurray
Helen Crossman	Florence Read Miles
Mildred Downs Moore	Mabel McCann Molloy
Lillian Anderson Dugan	Mildred Downes Moore
Elise Eddy	Rosanna Moses
Elizabeth Dunnet Eldredge	Elizabeth Nitchie
Carrie Fleming	Grace Reeder
Gretchen Franke	Dorothy Reilly
Florence Rose Friend	Margaret Renton
Bessie Holzman Greenwald	Gladys Bonfils Rogers
Helen Worrall Haight	Clarice Auerbach Rosenthal
Nannette Harlo	Edna Heller Saloman
Grace Meier Henderson	Ellen Maison Stetler
Gertrude Hunter Howard	Jessie Nottingham Strong
Agnes Shaw Hussey	Marion Weinstein
	Harriet Fox Whicher

THE CLASS OF 1909**Members who have contributed to the Class Gift of \$1,000.00**

*Maud Armstrong	Ethel Ivimey Langmuir
Lee Alexander Auchincloss	Evelyn Holt Lowry
Elsie Smith Bard	Florence Wyeth McLean
*Pauline Johnson Beardslee	Myra McLean
Frances Ingalls Beggs	Helen McPherson
Helen Newbold Black	*Eunice Miller
*Anna Gordon Blauner	Anna Holm de Monseigle
*Byrde Shale Bogardus	Ella Oppenheim Moos
Josephine Dempsey Borkes	Josephine O'Brien
Marion Boyd	Kathleen Hanley O'Keefe
Emma Bugbee	Hortense Murch Owen
Antoinette Carroll	Mary Swenson Palmer
Gladys Arkenburgh	Hilda Hedley Perry
Chandler	Edith Josephi Phillips
*Ruth Childs	Beatrice Beekman Ravner
Julia Goldberg Crone	Jessie Cochran Raymond
Una Logan Dale	Adelaide Richardson
Hazel Davies	Antoinette Riordan
Mary Demarest	Sara Rome
Margie Dann Edwards	Fannie Rosenfelder
Hilda Wood Eidson	Esther Hellin Sackman
Jessie Levy Feist	Rose Levy Schneider
Zoraida Feltus	Herlinda Smithers Seris
Helen Phillips Frank	*Maude Smith
Antoinette Fransioli	Adelaide Smithers
Margaret Frink	†Priscilla Stanton
Lillian Classon Gill	Edna Phillips Stern
Mary Godley	Edith Talpey
Mildred Woodhull Good	Lucy Thompson
Ethel Goodwin	Nellie Rich Tichborne
Alice Grant	†Comfort Tiffany
Blanche Samek Gutlohn	†Julia Tiffany
Charlotte Haithwaite	Laura Turnbull
*Theodora Hall	Anna Underwood
Eva vom Baur Hansl	Eleanor Gay Van de Water
Ruth Hardy	G. Anna Ver Planck
Elinor Hastings	*Vera Kupfer Voss
Cecile De Bouy Herrick	Helen Aiguier Warner
Ethel Nyitray Herrmann	Ethel Weston Welch

*May Stark Hildesley
Rita Hocheimer
Ethel Hodsdon
Hannah Falk Hofheimer
Jennie Hubbard Jacobus
Alice Jaggard
Edna Scales Jamieson
Margaret Kenney Jensen
Lois Kerr
V. Eleanor Kloster
Olga Rilke Landers

Mathilde Abraham Wolf
Helene Boas Yampolsky
Bernice Leerburger
Baumann (ex-1901)
Florence Wolf Brill
(ex-1909)
Dorothy Calman Wallerstein
(ex-1909)
*Deceased
†Resigned

Margaret Arnold
Olga Autenreith
Dorothy Barta
Hortense Koller Becker
Mildred Black
Alice Boehringer
Alice Burbank
Rose Campanare
Katharine Bouton Clay
Katherine Shea Condon
Esther Bingham Coney
Dorothy Cook
Jean Murray Craig
Katherine Hankinson
Cummings
Edythe Sheehan Dineen
May Donahue
Mary Donovan
Winifred Dunbrack
Mary-Lee Slaughter
Emerson
Agnes Purdy Faile
Mildred Weaver Feger
Dorothy Roman Feldman
Thelma Swartz Fontaine
Margaret Mead Fortune
Mary Foxell
Jessie Beers Galloway
Emily Trantum Gates
Lois Strong Gaudin
Ruth Prince Gimbel
Leah Gleichman
Helen Gray
Mary Weeks Gregory
Mary Hall
Ruth Strauss Hanauer
Marion Kingman
Hardenbergh
Helen Bradshaw Hassler
Elsa Hattorf
Elizabeth Corse Heum
Helen Hoffman
Gertrude Cahill Hollinshead
Dorothy Houghton
Emily Marx House
Elizabeth Klein Isaacs
Ruth Lustbader Israel
Esther Jennings

Harriett Jones
Rosalind Jones
Mildred Kassner Joseph
Helen Goldstone Kitzinger
Dorothy Scholze Krauss
Helen Balder Lawrence
Dorothy Rothchild Lewis
Agnes MacDonald
Gertrude Simpson Magaw
Eleanor Marples
Emily Martens
Katharine Seymour Martin
Marguerite Loud McAneny
Judith Byers McCormick
Wilhelmina Robinson /
Mauck
Anita Hughes Meyer
Marie Boas Michelson
Margaret Miller
Yvonne Moën
Edna Moreau
Effie Morehouse
Anna Blauvelt Perry
Jean Marshall Poole
Antoinette Raia
Lillian Shatz Rosenberg
Denver Frankel Roth
Helen Pattenden Rowell
Dorothy Harris Rubin
Eloise Hoctor Sage
Elizabeth Stauffer
Estella Raphael Steiner
Helen Pless Steiner
Anna Fulcher Stone
Anita Smith Taylor
Clare Loftus Verrilli
Ruth McIlvaine Voorhees
Hanna Mann Wallerstein
Hazel Dean Warren
Margaret Bowtell Wetherbee
Mary White
Leone Newton Willett
Nancy Boyd Willey
Alice Williams
Irene Lewis Williams
Ethel Wise
Elizabeth Wood

REUNION CLASSES

THE CLASS OF 1908

Members who have contributed to the Class Gift of \$2,000, in the form of Building Loan Certificates, plus \$262.00, given through the Alumnae Fund

Lillian Heim Anathan	Florence Wolff Klaber
Clairette Armstrong	Louise Traitel Loeb
Elizabeth Back	Laura Armstrong Lovejoy
Marguerite Newland Barron	Evelyn Macdonald
Lura Beam	Gertrude Wells Marburg
Martha Boardman	Leonora Armstrong Nealley
Margaret Golde Bryant	Josephine Cooke Pashley
Mary Budds	Mabel Peterson Paule
Bessie Beers Carman	Elsie Quinby
Marion Crowell	Elsa Rehmann
Helen Veith Dall	Edith Richardson
Mary Maxon Dorrance	Anne Rothenberg
Ellen O'Gorman Duffy	Rosenbaum
Clara Eaton	Florence Sammet Rothschild
Dorothea Eltzner	Rose Beekman Sittenfield
Eleanor Hunsdon Grady	Gertrude Stein
Ada Muller Griesmaier	Hilda Welles Stidfole
Elsie Helmrich	Louise Tattershall
Jeannette Kaufmann	Mary Casey Thorne
Herkimer	Annie Turnbull
Pauline Steinberg Hirschfeld	Olive Roe Wallstein
Jessie Houston	Marjorie Eastman Welter
Eleanor Hufeland	Marie Young Wilcock
Marie Hufeland	Catharine Woolsey
Florence Ernst Kaufman	Margaret Yates
Helen Loeb Kaufmann	Freda Peck Whittlesey (ex-1908)
Mildred Kerner	

THE CLASS OF 1923

Members who have contributed to the Class Gift of \$1,150.00

Maydelle Alderman	Helen Werner Johanson
Lylias Allen	Dorothy Maloney Johnson

INVESTMENT COURSE

Principles of Investment, an Elementary Course designed for Women Investors

Wednesday 11:00-12:30, Nov. 1—Dec. 20
Eight Lectures Fee \$11.00*

WALDORF-ASTORIA ASSEMBLY ROOMS
Fourth Floor

For this course, and the Monday Night Class, consult

CLARA I. TAYLOR
Investment Counselor

551 Fifth Ave., at 45th St., 5th Floor VANDERBILT 3-2770

*Includes Federal Tax

THE CLASS OF 1928

Members who have contributed to the Class Gift of \$915.00

Anne Anastasi	Margaret Ackerman Miller
Myra Ast	Rashelle Mutnick
Florence Beaujean	Betty Gould Neff
Dorothy Marx Byrns	Marjory Nelson
Alix Causse	Sue Osmotherly
Rosalie Conard	Mary Wood Peck
Hilda Muggli Deisroth	Edith Wood Pershouse
Kathleen Dunn	Elizabeth Reyman
Margaret Stanley Dykstra	Maria Romero
Lucy Hunt Edgar	Alma Lee Rowe
Constance Friess	Ruth Royer
Alice Bowtell Galloway	Dorothy Scheidell
Florence Rubin Garfunkel	Janet Schubert
Cornelia Hussey Haring	Sulamith Schwartz
Doris Hellman	Gertrude Smith
Sarah Elizabeth Hillyer	Jean Smith
Dorothy Hussie	Sylvia Stark
Alice Ittner	Harriette Van Wormer
Amy Jacob	Stearns

Helen Johnson	Dorothy Stickle
Althea Goeltz Jones	Elizabeth Sussman
Rose Kleinberg	Beatrice Tinson
Grace Kohn	Harriet Tyng
Miriam Lipton	Harriet Van Slyke Van Dyke
Helen MacLean	Elizabeth Voislowsky
Eleanor Michelfelder	Wittman

Alumnae Fund of Barnard College			
Donations to the Fund—to Oct 1			
119	Alumnae gave	\$ 1.00	1 Alumnae gave \$ 12.00
83	"	2.00	20 " " 15.00
11	"	2.50	12 " " 20.00
38	"	3.00	43 " " 25.00
3	"	4.00	13 " " 50.00
274	"	5.00	3 " " 100.00
154	"	10.00	1 " " 200.00

ALUMNAE FUND OF BARNARD COLLEGE

First Annual Report

OCTOBER, 1933.

RECEIPTS:

Balance, Oct. 17, 1932	\$ 23.06
Individual gifts	6,626.65
Class gifts	5,660.00
Alice Duer Miller reading	459.00
Boston Club gift	10.00
Reimbursement by classes for paper and multi-graphing	74.09
Miscellaneous—	
Interest	\$5.99
Gift of a friend	1.00
Wall St. Book Shop sales	3.00
Cash contribution, Trustees' Supper	.90
	\$10.89 10.89
Gifts to Fund sent directly to College	\$12,863.69
25th Anniversary gift of Class of 1908,	
Building and Loan stock valued at \$2,000.00	
Graduation gift of Class of 1933	500.00
	\$2,500.00 2,500.00
	\$15,363.69

DEBITS:

Office expenses paid by Fund	\$ 37.44
Insurance pledges, etc., collected for Classes and returned to them	208.15
	\$245.59
TOTAL	\$15,118.10

Contributors to the Alumnae Fund allocated their gifts as follows:

\$12,439.60—Unrestricted
2,250.84—Student Loans
119.00—Endowment
296.00—Scholarships

There were 760 contributors who sent their gifts directly to the Fund, making the per capita \$8.45. This figure does not take into account the class gifts and those who aided in building them up, as a complete list of contributors to class gifts is not available. If these donors and their contributions could be included, the per capita would probably be several dollars higher.

21st SEASON

THE INSTITUTE OF ARTS AND SCIENCES

A Series of Lectures by

NICHOLAS MURRAY BUTLER
 THE HON. HERBERT H. LEHMAN
 RAYMOND MOLEY
 ROCKWELL KENT
 MAURICE HINDUS
 H. V. KALTENBORN
 MAX EASTMAN
 H. A. OVERSTREET

THE HON. ALFRED E. SMITH
 THE HON. FRANCES PERKINS
 ROBERT FROST
 JOHN ERSKINE
 SAMUEL SEABURY
 PHYLLIS BENTLEY
 FRANK LLOYD WRIGHT
 JOHN MASON BROWN

and many other leading authorities and artists

These are evening events in McMillin Theater (B'way at 116th St.) You may become a Member. Write or phone today for complete announcement. Member's Ticket—\$15 for one; \$25 for two—admits to these and to many other program events.

THE INSTITUTE OF ARTS AND SCIENCES

Columbia University—University Extension

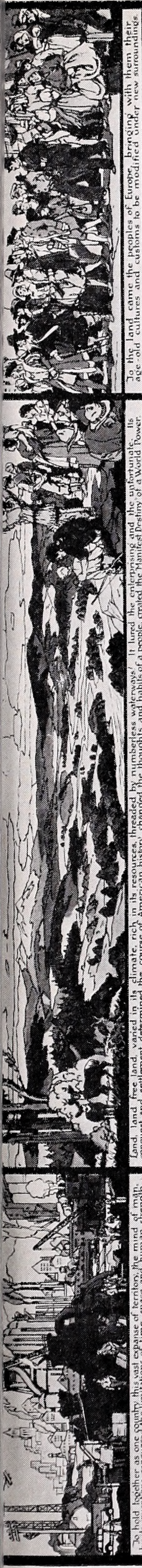
UNiversity 4-3200 (Ext. 773)

★ President Butler will deliver the first address of the season on October 16. Subject: "The Citizen and His World"

Alumna, What Now? . . .

- You wanted to help Barnard when she needed help. And so you made the Fund's first year a great success.
- There still is much that you can do. Funds are needed for endowment, scholarships and, above all, Student Loans.
- And that is what the Fund is for—a regular channel for your gifts—a way you can give money for immediate use—a means of showing where support is needed most.
- We'll put the case for 1934 before you fully—in November. You can give then—or in the Spring, if that is more convenient.
- Your College still needs you. Let's help to make the goal for this year \$25,000.

ALUMNAE FUND OF BARNARD COLLEGE



To hold together as one country, this vast expanse of territory, the mind of map, by its inventions, conquered the limitations of time, space and human strength.

Land, land free land, varied in its climate, rich in its resources, threaded by numberless waterways, it lured the adventurous and the untutored. Its conquest and settlement determined the course of American history.

To the land came the peoples of Europe, bringing with them their age-old cultures and customs to be modified under new surroundings.

OUR POLITICAL STORY

A framework in seven parts with the expanding frontier indicated in color

1 Europe starts us off 1492-1620

2 The Union begins as a colonial unit 1607-1776

3 We begin to assert our independent spirit, 1763-1788

4 We gain real independence as we learn to stand alone, 1788-1828

5 We fight and we recover, 1800-1899

6 We are busy with our own affairs and we quarrel over slavery in the West, 1820-1860

7 We seek ways to preserve Wilson peace at Versailles, 1919

8 The Great War calls our soldiers to Europe, 1917

9 The Spanish-American War takes us outside our own boundaries, 1898

10 We become a World Power, Again Manifest Destiny speaks, 1898-1920

11 The frontier comes to an end in the Great Plains and Western Mountains - 1890

12 Lee surrenders to Grant, 1865

13 Lincoln's election leads to Fort Sumter, 1861

14 Lincoln assures the Western Lands Proclamation, 1863

15 Western Lands opened free to the settler - 1802

16 Lincoln's election leads to Fort Sumter, 1861

17 We fight and we recover, 1800-1899

18 We are busy with our own affairs and we quarrel over slavery in the West, 1820-1860

19 We gain real independence as we learn to stand alone, 1788-1828

20 We begin to assert our independent spirit, 1763-1788

21 The Union begins as a colonial unit 1607-1776

22 Europe starts us off 1492-1620

23 Oregon Country

24 The Garden Spot of a Continent

25 The Spanish-American War

26 The Frontier Comes to an End

27 The Spanish-American War

28 The Spanish-American War

29 The Spanish-American War

30 The Spanish-American War

31 The Spanish-American War

32 The Spanish-American War

33 The Spanish-American War

34 The Spanish-American War

35 The Spanish-American War

36 The Spanish-American War

37 The Spanish-American War

38 The Spanish-American War

39 The Spanish-American War

40 The Spanish-American War

41 The Spanish-American War

42 The Spanish-American War

43 The Spanish-American War

44 The Spanish-American War

45 The Spanish-American War

46 The Spanish-American War

47 The Spanish-American War

48 The Spanish-American War

49 The Spanish-American War

50 The Spanish-American War

51 The Spanish-American War

52 The Spanish-American War

53 The Spanish-American War

54 The Spanish-American War

55 The Spanish-American War

56 The Spanish-American War

57 The Spanish-American War

58 The Spanish-American War

59 The Spanish-American War

60 The Spanish-American War

61 The Spanish-American War

62 The Spanish-American War

63 The Spanish-American War

64 The Spanish-American War

65 The Spanish-American War

66 The Spanish-American War

67 The Spanish-American War

68 The Spanish-American War

69 The Spanish-American War

70 The Spanish-American War

71 The Spanish-American War

72 The Spanish-American War

73 The Spanish-American War

74 The Spanish-American War

75 The Spanish-American War

76 The Spanish-American War

77 The Spanish-American War

78 The Spanish-American War

79 The Spanish-American War

80 The Spanish-American War

81 The Spanish-American War

82 The Spanish-American War

83 The Spanish-American War

84 The Spanish-American War

85 The Spanish-American War

86 The Spanish-American War

87 The Spanish-American War

88 The Spanish-American War

89 The Spanish-American War

90 The Spanish-American War

91 The Spanish-American War

92 The Spanish-American War

93 The Spanish-American War

94 The Spanish-American War

95 The Spanish-American War

96 The Spanish-American War

97 The Spanish-American War

98 The Spanish-American War

99 The Spanish-American War

100 The Spanish-American War



101 The Spanish-American War

102 The Spanish-American War

103 The Spanish-American War

104 The Spanish-American War

105 The Spanish-American War

106 The Spanish-American War

107 The Spanish-American War

108 The Spanish-American War

109 The Spanish-American War

110 The Spanish-American War

111 The Spanish-American War

112 The Spanish-American War

113 The Spanish-American War

114 The Spanish-American War

115 The Spanish-American War

116 The Spanish-American War

117 The Spanish-American War

118 The Spanish-American War

119 The Spanish-American War

120 The Spanish-American War

121 The Spanish-American War

122 The Spanish-American War

123 The Spanish-American War

124 The Spanish-American War

125 The Spanish-American War

126 The Spanish-American War

127 The Spanish-American War

128 The Spanish-American War

129 The Spanish-American War

130 The Spanish-American War

131 The Spanish-American War

132 The Spanish-American War

133 The Spanish-American War

134 The Spanish-American War

135 The Spanish-American War

136 The Spanish-American War

137 The Spanish-American War

138 The Spanish-American War

139 The Spanish-American War

140 The Spanish-American War

141 The Spanish-American War

142 The Spanish-American War

143 The Spanish-American War

144 The Spanish-American War

145 The Spanish-American War

146 The Spanish-American War

147 The Spanish-American War

148 The Spanish-American War

149 The Spanish-American War

150 The Spanish-American War

151 The Spanish-American War

152 The Spanish-American War

153 The Spanish-American War

154 The Spanish-American War

155 The Spanish-American War

156 The Spanish-American War

157 The Spanish-American War

158 The Spanish-American War

159 The Spanish-American War

160 The Spanish-American War

161 The Spanish-American War

162 The Spanish-American War

163 The Spanish-American War

164 The Spanish-American War

165 The Spanish-American War

166 The Spanish-American War

167 The Spanish-American War

168 The Spanish-American War

169 The Spanish-American War

170 The Spanish-American War

171 The Spanish-American War

172 The Spanish-American War

173 The Spanish-American War

174 The Spanish-American War

175 The Spanish-American War

176 The Spanish-American War

177 The Spanish-American War

178 The Spanish-American War

179 The Spanish-American War

180 The Spanish-American War

181 The Spanish-American War

182 The Spanish-American War

183 The Spanish-American War

184 The Spanish-American War

185 The Spanish-American War

186 The Spanish-American War

187 The Spanish-American War

188 The Spanish-American War

189 The Spanish-American War

190 The Spanish-American War

191 The Spanish-American War

192 The Spanish-American War

193 The Spanish-American War

194 The Spanish-American War

195 The Spanish-American War

196 The Spanish-American War

197 The Spanish-American War

198 The Spanish-American War

199 The Spanish-American War

200 The Spanish-American War

Let's hear you say
"They're Milder, Mate"



© 1933, LIGGETT & MYERS TOBACCO CO.

*the cigarette that's Milder
the cigarette that Tastes Better*

Chesterfield